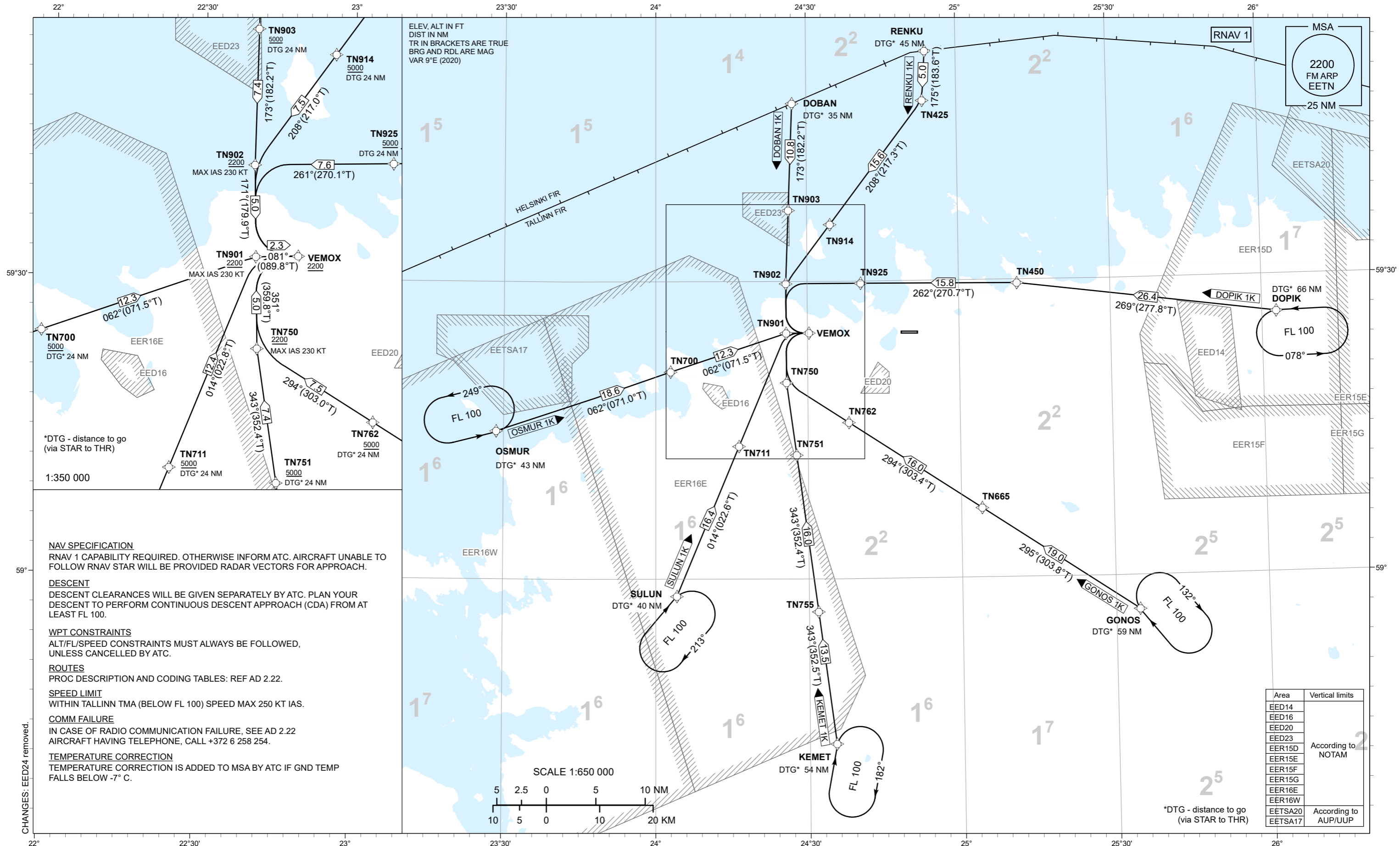


**STANDARD ARRIVAL CHART  
INSTRUMENT (STAR) - ICAO**

TRANSITION ALTITUDE  
5000

TOWER 135.905  
RADAR 127.905  
ATIS 124.880 / TEL: +372 625 8210

**LENNART MERI TALLINN (EETN)**  
RNAV (GNSS) STAR  
**RWY 08**  
DOBAN 1K DOPIK 1K GONOS 1K  
KEMET 1K OSMUR 1K RENKU 1K SULUN 1K



\*DTG - distance to go  
(via STAR to THR)

**NAV SPECIFICATION**  
RNAV 1 CAPABILITY REQUIRED. OTHERWISE INFORM ATC. AIRCRAFT UNABLE TO FOLLOW RNAV STAR WILL BE PROVIDED RADAR VECTORS FOR APPROACH.

**DESCENT**  
DESCENT CLEARANCES WILL BE GIVEN SEPARATELY BY ATC. PLAN YOUR DESCENT TO PERFORM CONTINUOUS DESCENT APPROACH (CDA) FROM AT LEAST FL 100.

**WPT CONSTRAINTS**  
ALT/FL/SPEED CONSTRAINTS MUST ALWAYS BE FOLLOWED, UNLESS CANCELLED BY ATC.

**ROUTES**  
PROC DESCRIPTION AND CODING TABLES: REF AD 2.22.

**SPEED LIMIT**  
WITHIN TALLINN TMA (BELOW FL 100) SPEED MAX 250 KT IAS.

**COMM FAILURE**  
IN CASE OF RADIO COMMUNICATION FAILURE, SEE AD 2.22 AIRCRAFT HAVING TELEPHONE, CALL +372 6 258 254.

**TEMPERATURE CORRECTION**  
TEMPERATURE CORRECTION IS ADDED TO MSA BY ATC IF GND TEMP FALLS BELOW -7° C.

Area	Vertical limits
EED14	According to NOTAM
EED16	
EED20	
EED23	
EER15D	
EER15E	
EER15F	
EER15G	According to AUP/UUP
EER16E	
EER16W	
EETSA20	According to AUP/UUP
EETSA17	

CHANGES: EED24 removed.