

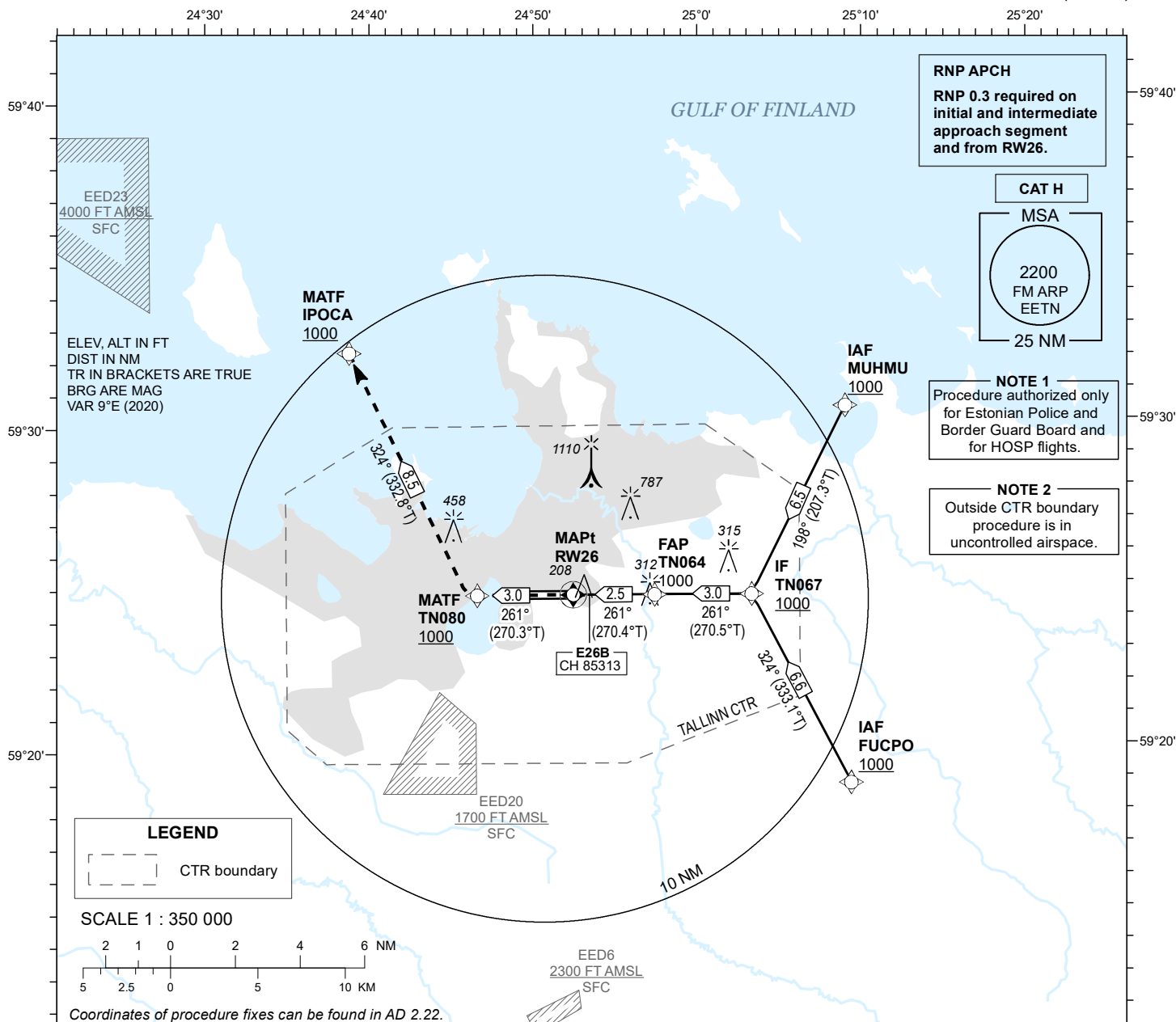
**INSTRUMENT  
APPROACH  
CHART - ICAO**

**EGNOS  
CH 85313  
E26B**

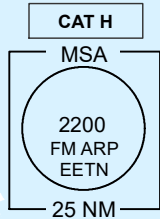
**AD ELEV 135 FT  
HEIGHTS RELATED TO  
THR RWY 26 ELEV 135 FT**

RADAR 127.905  
TOWER 135.905  
ATIS 124.880 / TEL: +372 625 8210

**LENNART MERI  
TALLINN (EETN)  
RNP H RWY 26  
(CAT H)**



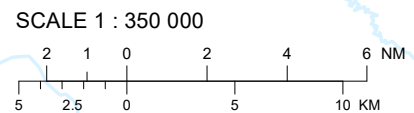
**RNP APCH**  
RNP 0.3 required on initial and intermediate approach segment and from RW26.



**NOTE 1**  
Procedure authorized only for Estonian Police and Border Guard Board and for HOSP flights.

**NOTE 2**  
Outside CTR boundary procedure is in uncontrolled airspace.

**LEGEND**  
--- CTR boundary

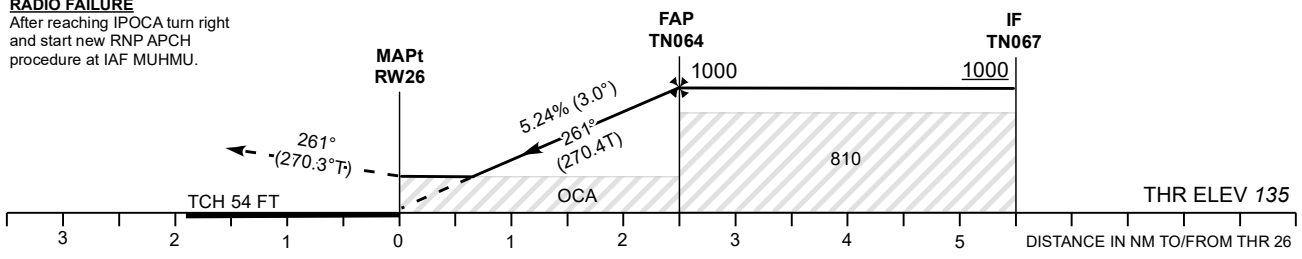


Coordinates of procedure fixes can be found in AD 2.22.

**TRANSITION ALT 5000**

**MISSED APPROACH**  
Climb to TN080 reaching 1000 FT, turn right to IPOCA and remain TWR CH 135.905.

**RADIO FAILURE**  
After reaching IPOCA turn right and start new RNP APCH procedure at IAF MUHMU.



Timing not authorized for defining the MAPt.

OCA (H)	CAT H
LPV Cat I 4.2%*	366 (231)
LPV Cat I 4.5%*	335 (200)

\* MNM MISSED APCH CLIMB GRADIENT

Final Approach DIST	0.5 NM	1.0 NM	1.5 NM	2.0 NM	2.5 NM	
ELEV	350	510	670	830	990	
HGT	210	370	530	690	850	
	KT	60	80	100	120	140
FAP-MAPt 2.5 NM	MIN:SEC	2:31	1:54	1:31	1:16	1:05
Rate of descent	FT / MIN	310	420	530	630	740

CHANGES: TALLINN CTR and Note 1 and Note 2 added.