

# INSTRUMENT APPROACH CHART - ICAO

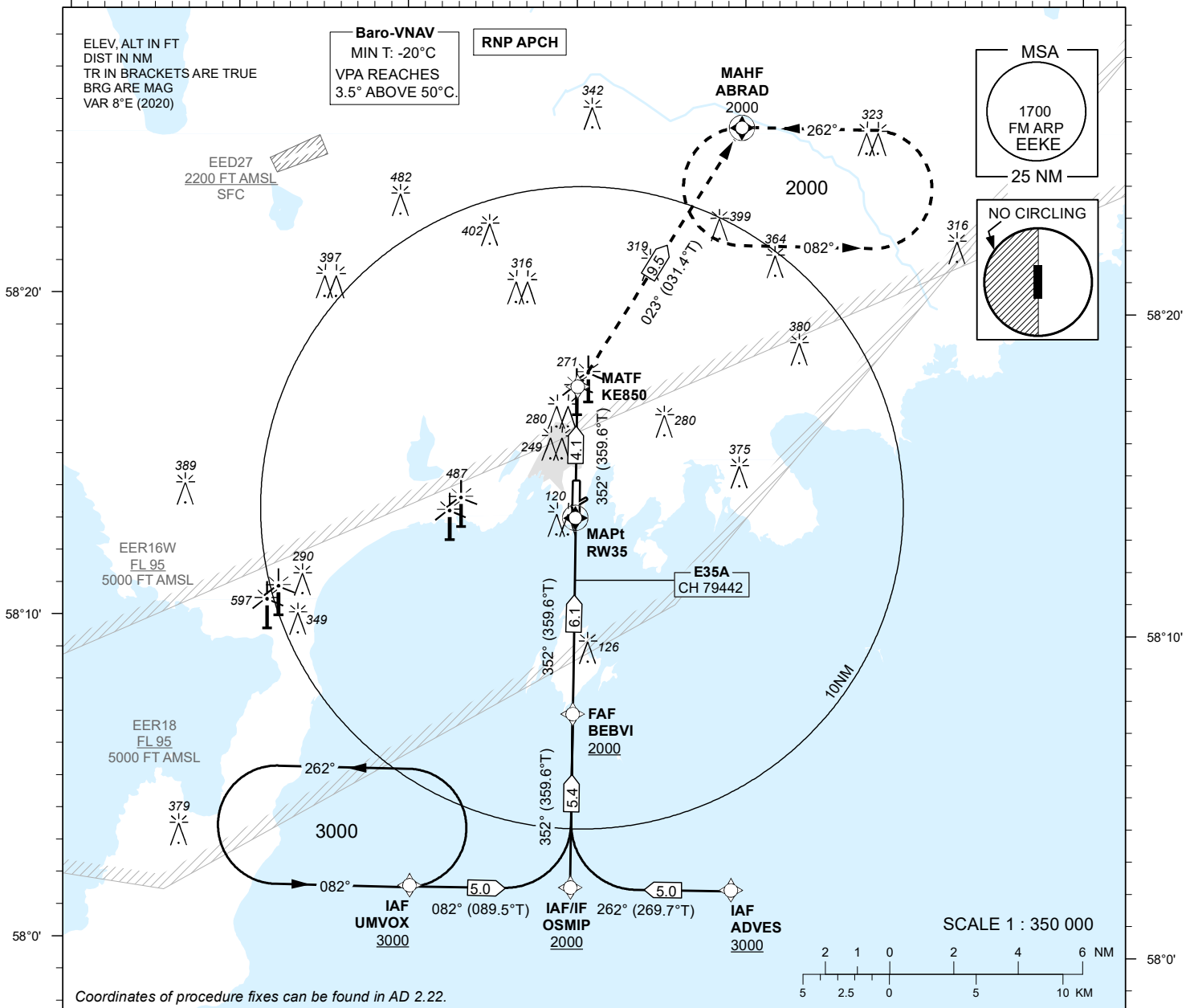
SBAS  
CH 79442  
E35A

AD ELEV 15 FT  
HEIGHTS RELATED TO  
THR RWY 35 ELEV 8 FT

INFORMATION 118.055

**KURESSAARE (EEKE)**  
RNP RWY 35  
(CAT A;B;C)

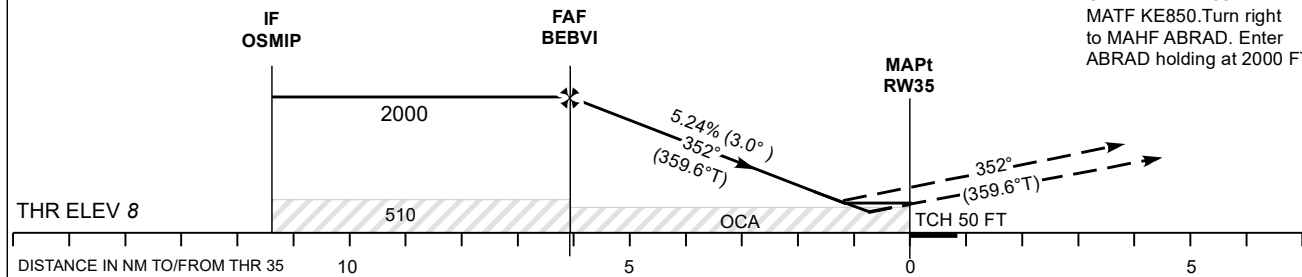
22°0' 22°10' 22°20' 22°30' 22°40' 22°50' 23°0'



22°10' 22°20' 22°30' 22°40' 22°50' 23°0'

TRANSITION ALT 5000

**MISSED APPROACH:**  
Climb on track 352° to MATF KE850. Turn right to MAHF ABRAD. Enter ABRAD holding at 2000 FT.



Decision heights (DH) below 250 FT shall not be used due to APV approach operation Type A limitations.

OCA (H)	Final Approach DIST			5.0 NM	4.0 NM	3.0 NM	2.0 NM	1.0 NM (LPV)	
	A	B	C	ALT	HGT	MIN:SEC	FT / MIN		
LPV	249 (241)	262 (254)	270 (262)	1650	1340	1020	700	390	
LNAV/VNAV	250 (240)	270 (260)			1640	1330	1010	690	380
LNAV	380 (370)			KT	90	100	120	140	160
Circling E of AD only	610 (600)	710 (700)	Rate of descent	MIN:SEC	4:04	3:40	3:03	2:37	2:17
				FT / MIN	475	530	635	740	850

CHANGES: EER18 added.