

Kontakt / Contact

Address: Lennuliiklusteeninduse
Aktsiaseelts
Lennundusteabe
osakond
Kanali põik 3
Rae küla, Rae vald
10112 Harjumaa
Estonia

Tel: +372 671 0255
AFS: EETNYOYX
Email: aip@eans.ee
URL: aim.eans.ee

AIP Supplement for Estonia

AIP Lisa / AIP SUP
08/2024
Kehtiv alates
Effective from
01 JUN 2024
UFN
Avaldatud
Published on
22 MAY 2024

**Muudatused seoses DME/DME
kasutuselevõttuga Tartu FIZ/RMZ-is****Changes due to Implementation of
DME/DME in Tartu FIZ/RMZ****1 Üldine**

See AIP Lisa täiendab järgmiseid AIP-i osasid:
GEN 2.5, ENR 4.1 ja AD 2 EETU.

See AIP Lisa sisaldab muudatusi seoses DME/DME
kasutuselevõttuga Tartu FIZ/RMZ-is.

AIP Lisa võimalikud muudatused avaldatakse NOTAM-iga.

2 Periood

1. juuni 2024 00:00 UTC kuni UFN

1 General

This AIP SUP supplements the following portions of the
AIP:
GEN 2.5, ENR 4.1 and AD 2 EETU.

This AIP SUP contains changes due to the implementation
of DME/DME in Tartu FIZ/RMZ.

Possible changes to AIP SUP shall be published by NOTAM.

2 Period

01 JUN 2024 00:00 UTC to UFN

3 Muudatused

3 Changes

GEN 2.5 RAADIONAVIGATSIOONISEADMETE LOETELU

GEN 2.5 LIST OF RADIO NAVIGATION AIDS

Eesmärk:

A - Lennuvälja raadionavigatsiooni seade

E - Marsruudi raadionavigatsiooni seade

Purpose:

A - Aerodrome radio navigation aid

E - En-route radio navigation aid

Tunnus ID	Jaama nimi Station name	Seade Facility	Eesmärk Purpose
AMI	Ämari	VORTAC	A
ASM	Assamalla	DME	E
IAM	Ämari	ILS/LOC	A
IAM	Ämari	DME	A
IGO	Ämari	ILS/LOC	A
IGO	Ämari	DME	A
IIB	Tallinn	ILS/LOC	A
ILK	Tallinn	ILS/LOC	A
IUM	Tartu	ILS/LOC	A
IWA	Kuressaare	ILS/LOC	A
HAR	Harju-Keibu	DME	E
KRP	Kaarepere	DME	AE
KRD	Kärdla	DME	A
KRS	Kuressaare	DME	AE
LAI	Laimjala	DME	E
SLT	Sultsi	DME	AE
TLL	Tallinn	DME	AE

Jaama nimi Station name	Seade Facility	Tunnus ID	Eesmärk Purpose
Assamalla	DME	ASM	E
Harju-Keibu	DME	HAR	E
Kaarepere	DME	KRP	AE
Kuressaare	DME	KRS	AE
Kuressaare	ILS/LOC	IWA	A
Kärdla	DME	KRD	A
Laimjala	DME	LAI	E
Sultsi	DME	SLT	AE
Tallinn	ILS/LOC	IIB	A
Tallinn	ILS/LOC	ILK	A
Tallinn	DME	TLL	AE
Tartu	ILS/LOC	IUM	A
Ämari	VORTAC	AMI	A
Ämari	ILS/LOC	IAM	A
Ämari	DME	IAM	A
Ämari	ILS/LOC	IGO	A
Ämari	DME	IGO	A

Märkus: DME TLL eemaldatakse 13. juunil 2024.

Note: DME TLL will be removed as of 13 JUN 2024.

**ENR 4.1 MARSRUUTIDE
RAADIONAVIGATSIOONISEADMED**
ENR 4.1 RADIO NAVIGATION AIDS - EN-ROUTE

Jaama nimi (VOR/VAR) Name of station (VOR/VAR)	ID	Sagedus (CH) Frequency (CH)	Tööaeg Hours of operation	Koordinaadid Coordinates	DME saateantenni kõrgus ELEV DME an- tenna	Märkused Remarks
1	2	3	4	5	6	7
ASSAMALLA DME	ASM	113.550 MHz (CH 82Y)	H24	591243N 0261548E	800 ft AMSL	Tegevusraadius: Coverage: 160 NM (üalpool / above FL 95)
HARJU-KEIBU DME	HAR	110.200 MHz (CH 39X)	H24	591530N 0234626E	400 ft AMSL	Tegevusraadius: Coverage: 160 NM (üalpool / above FL 95)
KAAREPERE DME	KRP	112.150 MHz (CH 58Y)	H24	583935N 0263250E	600 ft AMSL	Tegevusraadius: Coverage: 160 NM (üalpool / above FL 95)
KURESSAARE DME (8° 00'E 2020) (dekl.-)	KRS	112.400 MHz (CH 71X)	H24	581342N 0223055E	100 ft AMSL	Tegevusraadius: Coverage: FL 500/80 NM
LAIMJALA DME	LAI	111.750 MHz (CH 54Y)	H24	582601N 0230056E	400 ft AMSL	Tegevusraadius: Coverage: 160 NM (üalpool / above FL 95)
SULTSI DME	SLT	109.450 MHz (CH 31Y)	H24	581525N 0253713E	700 ft AMSL	Tegevusraadius: Coverage: 160 NM (üalpool / above FL 95)
TALLINN DME (9° 00'E 2020) (dekl.-)	TLL	112.200 MHz (CH 59X)	H24	592441N 0245018E	200 ft AMSL	Tegevusraadius: Coverage: FL 500/80 NM Eemaldatakse 13. juunil 2024. Will be removed as of 13 JUN 2024.

EETU AD 2.19 RAADIONAVIGATSIOONI- JA MAANDUMISSEADMED

EETU AD 2.19 RADIO NAVIGATION AND LANDING AIDS

Seadme tüüp <i>Type of aid, MAG VAR</i> <i>Type of Supported OP (for VOR/ILS/MLS, Given Declination)</i>	ID	FREQ	Tööaeg <i>OPR HR</i>	Saateantenni koordinaadid <i>Position of Transmitting Antenna Co- ordinates</i>	DME saateantenni kõrgus <i>Elevation of DME Transmit- ting Antenna</i>	Märkused <i>Remarks</i>
1	2	3	4	5	6	7
LOC 26 ILS CAT I (10° E 2020)	IUM	108.500 MHz	HO	581825.5N 0263948.9E		LOC kurss 259° <i>LOC course 259°</i>
GP 26		329.900 MHz	HO	581823.7N 0264151.1E		Nurk 3° <i>Angle 3°</i>
DME 26	IUM	CH 22X	HO	581823.7N 0264151.1E	300 ft AMSL	Tegevusraadius: <i>Coverage:</i> 25 NM
KAAREPERE DME	KRP	112.150 MHz (CH 58Y)	H24	583935.1N 0263249.8E	600 ft AMSL	Ei ole <i>NIL</i>
SULTSI DME	SLT	109.450 MHz (CH 31Y)	H24	581525.4N 0253712.6E	700 ft AMSL	Ei ole <i>NIL</i>
Märkus:			Remark:			
Raadionavigatsiooni- ja maandumisseadmete käitamise eest vastutab Lennuliiklusteeninduse AS, kontaktid: vaata GEN 3.4.			The responsible unit for radio navigation and landing aids is Estonian ANS, for contacts see GEN 3.4.			

EETU AD 2.22 LENNUPROTSEDUURID

EETU AD 2.22 FLIGHT PROCEDURES

2.1.1.1 Asukoha uuendus

Kõik RNAV STAR-id põhinevad GNSS või DME/DME asukoha uuendusel.

2.1.1.1 Position Update

All RNAV STARs are based on GNSS or DME/DME position update.

2.2.1.1 Asukoha uuendus

Kõik RNAV SID-id põhinevad GNSS või DME/DME asukoha uuendusel.

2.2.1.1 Position Update

All RNAV SIDs are based on GNSS or DME/DME position update.

2.3.1.2 Asukoha uuendus

Kõik RNP instrumentaallähenemise protseduurid põhinevad GNSS või DME/DME asukoha uuendusel.

2.3.1.2 Position Update

All RNP instrument approach procedures are based on GNSS or DME/DME position update.

4 Lisad**4 Appendixes**

Kaardi nimetus Name of chart	Leht Page
Standardse saabumise kaart - Instrument - ICAO - EETU RNAV STAR RWY 08 <i>Standard Arrival Chart - Instrument - ICAO - EETU RNAV STAR RWY 08</i>	Lisa 1 <i>Appendix 1</i>
Standardse saabumise kaart - Instrument - ICAO - EETU RNAV STAR RWY 26 <i>Standard Arrival Chart - Instrument - ICAO - EETU RNAV STAR RWY 26</i>	Lisa 2 <i>Appendix 2</i>
Standardse väljumise kaart - Instrument - ICAO - EETU RNAV SID RWY 08 <i>Standard Departure Chart - Instrument - ICAO - EETU RNAV SID RWY 08</i>	Lisa 3 <i>Appendix 3</i>
Standardse väljumise kaart - Instrument - ICAO - EETU RNAV SID RWY 26 <i>Standard Departure Chart - Instrument - ICAO - EETU RNAV SID RWY 26</i>	Lisa 4 <i>Appendix 4</i>
Instrumentaallähenemiskaart - ICAO - EETU ILS or LOC RWY 26 <i>Instrument Approach Chart - ICAO - EETU ILS or LOC RWY 26</i>	Lisa 5 <i>Appendix 5</i>

TÜHJAKS JÄETUD
PAGE INTENTIONALLY LEFT BLANK

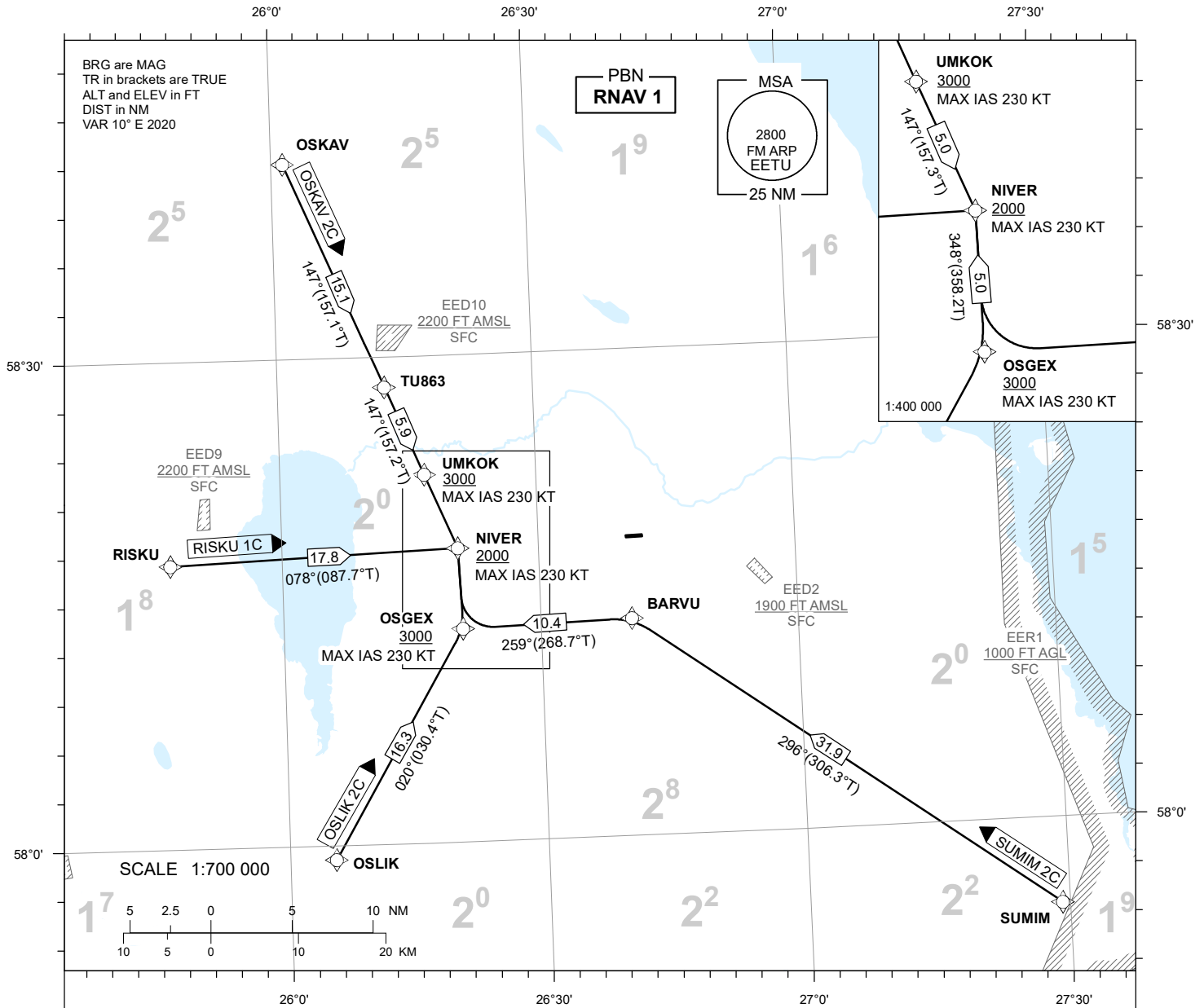
**STANDARD ARRIVAL CHART
INSTRUMENT (STAR) - ICAO**

TRANSITION ALTITUDE
5000

TARTU (EETU)
RNAV (DME/DME or GNSS) STAR
RWY 08

INFORMATION 133.905
ATIS 123.130 / TEL: +372 730 9212

OSKAV 2C OSLIK 2C
RISKU 1C SUMIM 2C



NAV SPECIFICATION

RNAV 1 CAPABILITY REQUIRED.

DESCENT

IF TRAFFIC PERMITS, PLAN CONTINUOUS DESCENT ARRIVAL (CDA) ACCORDING TO STAR.

WPT CONSTRAINTS

ALT/FL/ SPEED CONSTRAINTS MUST ALWAYS BE FOLLOWED AS PUBLISHED.

ROUTES

CODING TABLES AND WPT LIST: REF AD 2.22.

RADIO COMMUNICATION FAILURE

IN CASE OF RADIO COMMUNICATION FAILURE SEE AD 2.22.

TEMPERATURE CORRECTION

TEMPERATURE CORRECTION IS ADDED TO MSA BY PILOT IF GND TEMPERATURE FALLS BELOW -0°C.

CHANGES: DME-DME added.

TÜHJAKS JÄETUD
PAGE INTENTIONALLY LEFT BLANK

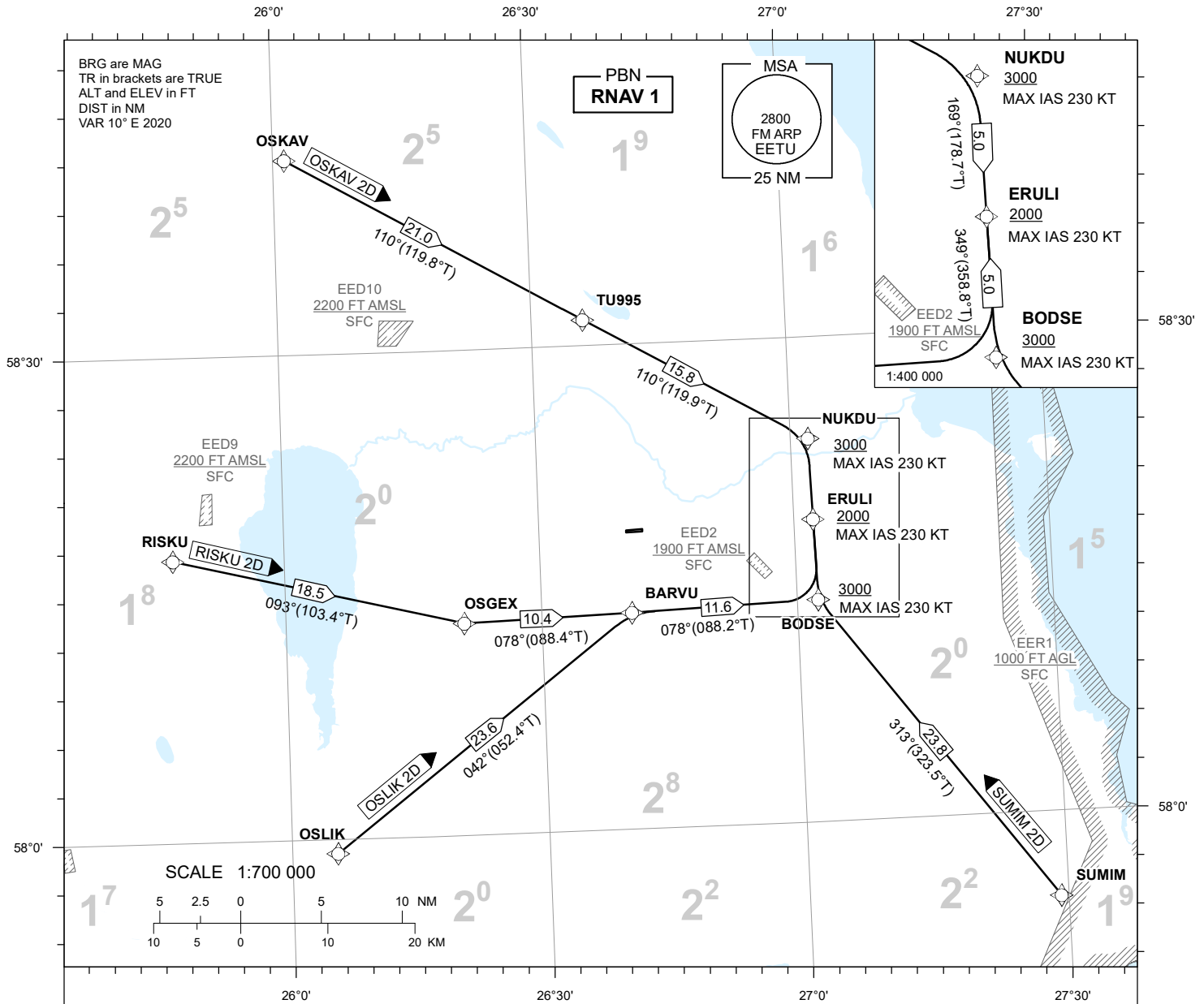
STANDARD ARRIVAL CHART INSTRUMENT (STAR) - ICAO

TRANSITION ALTITUDE
5000

TARTU (EETU)
RNAV (DME/DME or GNSS) STAR
RWY 26

INFORMATION 133.905
ATIS 123.130 / TEL: +372 730 9212

OSKAV 2D OSLIK 2D
RISKU 2D SUMIM 2D



NAV SPECIFICATION

RNAV 1 CAPABILITY REQUIRED.

DESCENT

IF TRAFFIC PERMITS, PLAN CONTINUOUS DESCENT ARRIVAL (CDA) ACCORDING TO STAR.

WPT CONSTRAINTS

ALT/FL / SPEED CONSTRAINTS MUST ALWAYS BE FOLLOWED AS PUBLISHED.

ROUTES

CODING TABLES AND WPT LIST: REF AD 2.22.

RADIO COMMUNICATION FAILURE

IN CASE OF RADIO COMMUNICATION FAILURE SEE AD 2.22.

TEMPERATURE CORRECTION

TEMPERATURE CORRECTION IS ADDED TO MSA BY PILOT IF GND TEMPERATURE FALLS BELOW -0°C.

CHANGES: DME-DME added.

TÜHJAKS JÄETUD
PAGE INTENTIONALLY LEFT BLANK

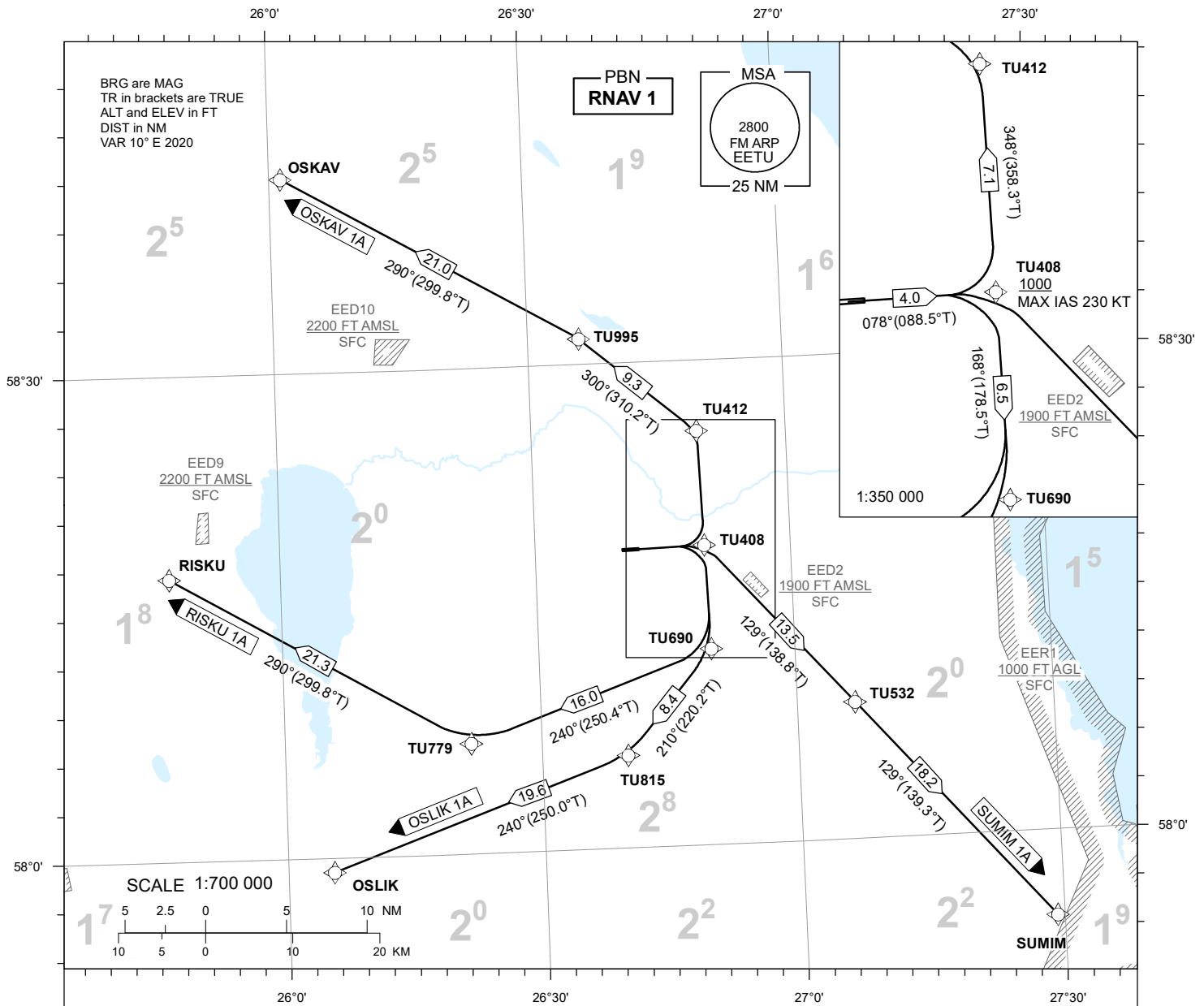
STANDARD DEPARTURE CHART INSTRUMENT (SID) - ICAO

TRANSITION ALTITUDE
5000

TARTU (EETU)
RNAV (DME/DME or GNSS) SID
RWY 08

INFORMATION 133.905
ATIS 123.130 / TEL: +372 730 9212

OSKAV 1A OSLIK 1A
RISKU 1A SUMIM 1A



NAV SPECIFICATION
RNAV 1 CAPABILITY REQUIRED.
ROUTES
CODING TABLES AND WPT LIST: REF AD 2.22.

**MINIMUM CLIMB GRADIENTS
DUE TO AIRSPACE RESTRICTIONS:**

OSKAV 1A 4,1% (250 FT/NM) UP TO TU408,
AFTER THAT 3,7% (230 FT/NM)

OSLIK 1A 4,1% (250 FT/NM)

RISKU 1A 4,1% (250 FT/NM) UP TO TU408

SUMIM 1A 4,3% (260 FT/NM)

AIRCRAFT UNABLE TO COMPLY SHALL
INFORM ATIS.

CHANGES: DME-DME added.

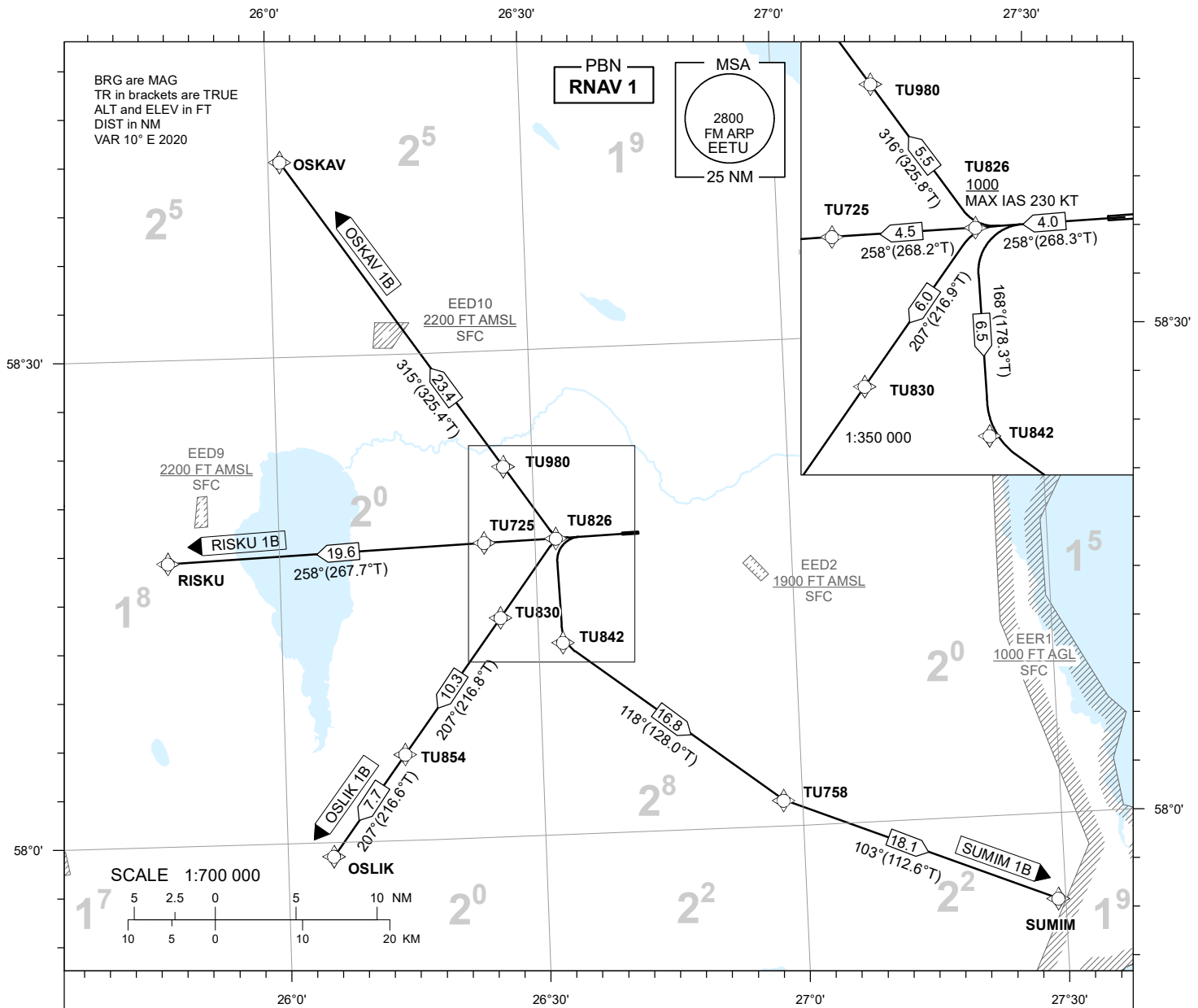
TÜHJAKS JÄETUD
PAGE INTENTIONALLY LEFT BLANK

STANDARD DEPARTURE CHART INSTRUMENT (SID) - ICAO

TRANSITION ALTITUDE
5000

TARTU (EETU)
RNAV (DME/DME or GNSS) SID
RWY 26
OSKAV 1B OSLIK 1B
RISKU 1B SUMIM 1B

INFORMATION 133.905
ATIS 123.130 / TEL: +372 730 9212



NAV SPECIFICATION
RNAV 1 CAPABILITY REQUIRED.
ROUTES
CODING TABLES AND WPT LIST: REF AD 2.22.

**MINIMUM CLIMB GRADIENTS
DUE TO AIRSPACE RESTRICTIONS:**

OSKAV 1B 4,6% (280 FT/NM)
OSLIK 1B, RISKU 1B 5,5% (340 FT/NM)
SUMIM 1B 4,1% (250 FT/NM) UP TO TU826,
AFTER THAT 3,4% (210 FT/MIN)
AIRCRAFT UNABLE TO COMPLY SHALL
INFORM ATIS.

CHANGES: DME-DME added.

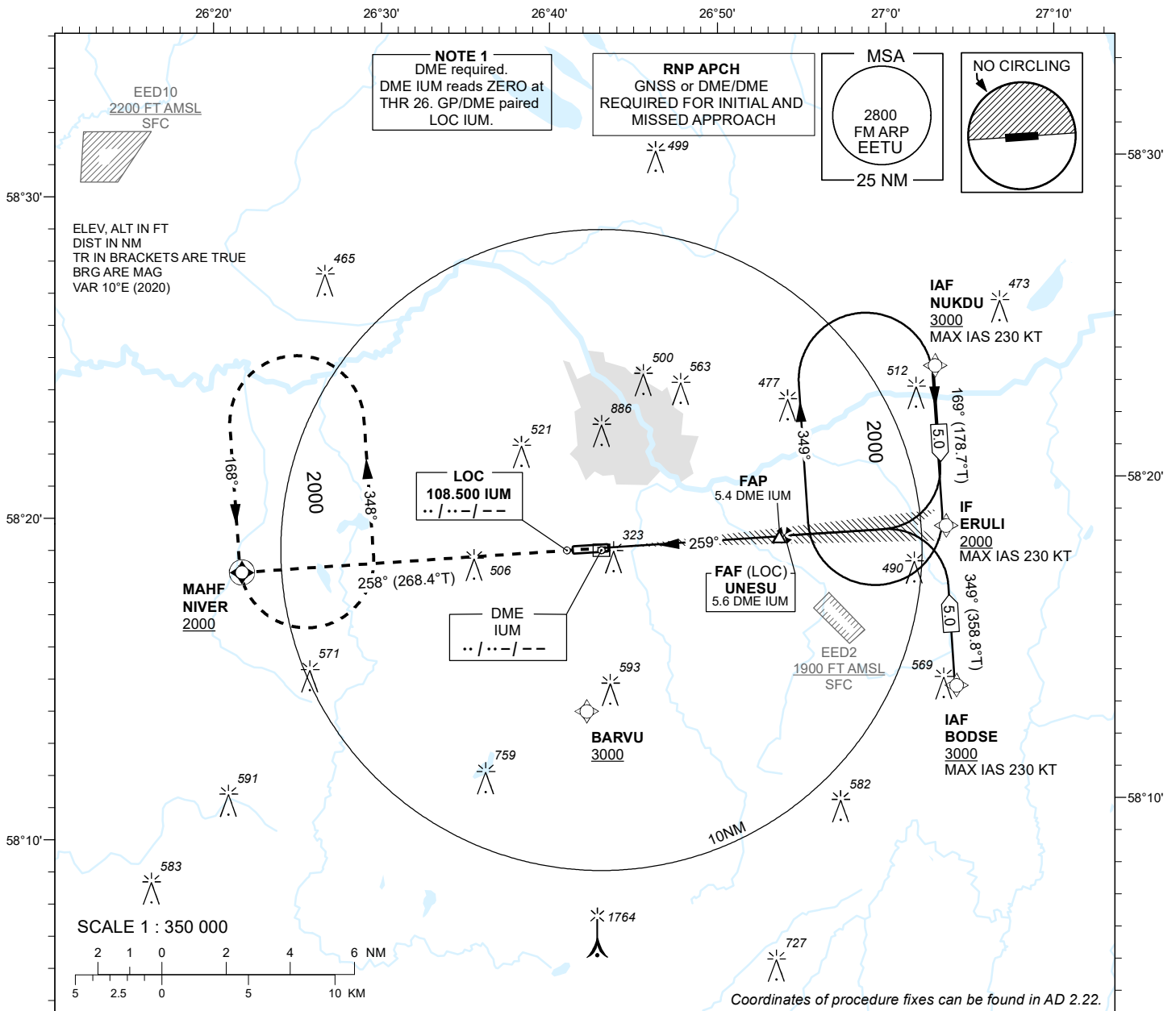
TÜHJAKS JÄETUD
PAGE INTENTIONALLY LEFT BLANK

INSTRUMENT APPROACH CHART - ICAO

AD ELEV 220 FT
HEIGHTS RELATED TO
THR RWY 26 ELEV 193 FT

INFORMATION 133.905
ATIS 123.130 / TEL: +372 730 9212

TARTU (EETU)
ILS or LOC RWY 26
(CAT A;B;C)



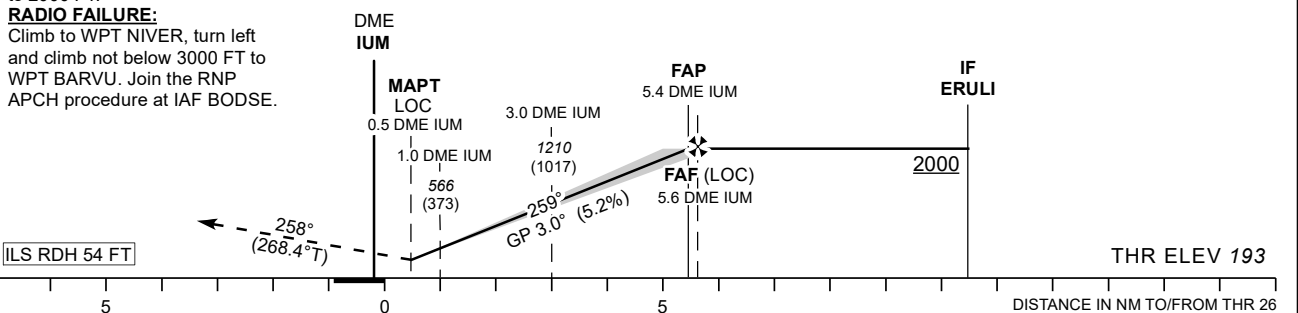
MISSED APPROACH:
Climb on track 258° to NIVER.
Enter NIVER holding climbing to 2000 FT.

RADIO FAILURE:
Climb to WPT NIVER, turn left and climb not below 3000 FT to WPT BARVU. Join the RNP APCH procedure at IAF BODSE.

TRANSITION ALT 5000

DME IUM	DME 2	DME 3	DME 4	DME 5
ALT	880	1200	1520	1800
HGT	(690)	(1010)	(1330)	(1610)

Table for LOC ONLY approach.



CHANGES: DME-DME added.

NO OFZ RWY 26

OCA (H)		A	B	C	Timing not authorized for defining the MAPT.						
Straight-in Approach	CAT I	417 (224)	429 (236)	437 (244)	GS	KT	90	100	120	140	160
	LOC ONLY	570 (380)			FAF-MAPT 5.1 NM	MIN:SEC	3:24	3:04	2:33	2:11	1:55
Circling (S of AD only)		630 (410)	730 (510)	900 (680)	Rate of descent	FT / MIN	475	530	635	740	850

TÜHJAKS JÄETUD
PAGE INTENTIONALLY LEFT BLANK