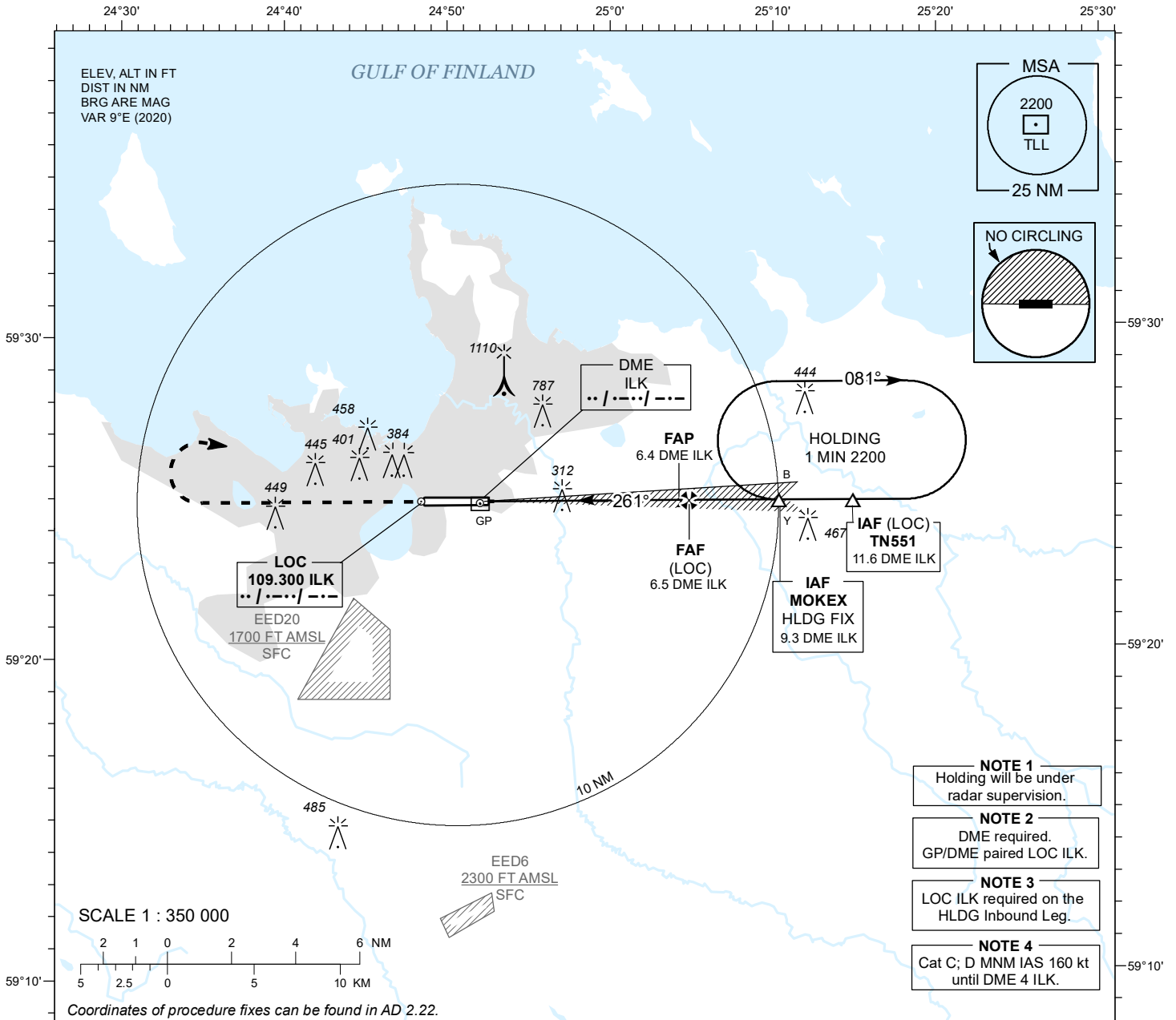


INSTRUMENT APPROACH CHART - ICAO

AD ELEV 135 FT
HEIGHTS RELATED TO
THR RWY 26 ELEV 135 FT

RADAR 127.905
TOWER 135.905
ATIS 124.880 / TEL: +372 625 8210

LENNART MERI TALLINN (EETN) ILS or LOC RWY 26



- NOTE 1**
Holding will be under radar supervision.
- NOTE 2**
DME required.
GP/DME paired LOC ILK.
- NOTE 3**
LOC ILK required on the HLDG Inbound Leg.
- NOTE 4**
Cat C; D MNM IAS 160 kt until DME 4 ILK.

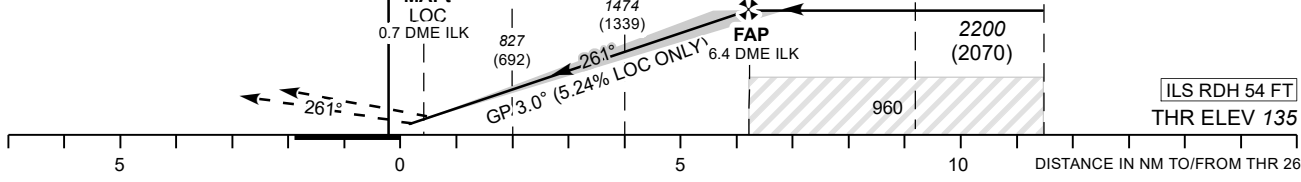
TRANSITION ALT 5000

DME ILK	DME 2	DME 3	DME 4	DME 5	DME 6
ALT	770	1090	1410	1730	2040
HGT	(630)	(950)	(1270)	(1590)	(1900)

Table for LOC ONLY approach

MISSED APPROACH
Climb on track 261° to 2200 (2070) and contact radar CH 127.905.

RADIO FAILURE
After reaching 2200 (2070) turn right and join MOKEX holding. Start new approach after one full holding and land.



NO OFZ RWY 26

OCA (H)		A	B	C	D	Timing not authorized for defining the MAPt.						
Straight-in Approach	CAT I	308 (173)	320 (185)	328 (193)	338 (203)	GS	KT	90	100	120	140	160
	LOC ONLY	560 (430)				FAF-MAPt 5.8 NM	MIN:SEC	3:52	3:29	2:54	2:29	2:11
Circling (S of AD only)		1360 (1230)		1510 (1380)		Rate of descent	FT / MIN	475	530	635	740	850

CHANGES: Racetrack and VOR/DME removal.