

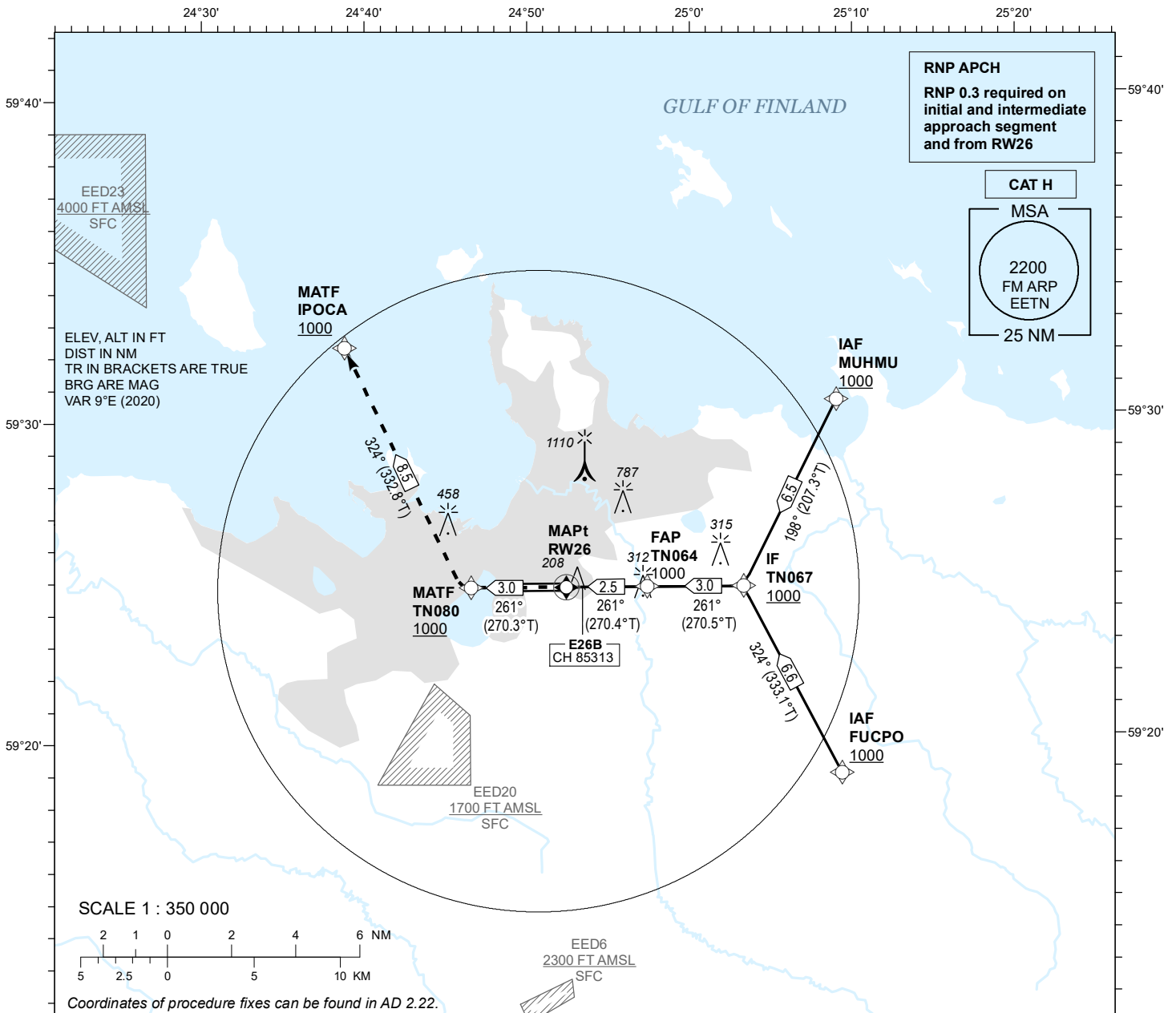
**INSTRUMENT
APPROACH
CHART - ICAO**

**EGNOS
CH 85313
E26B**

**AD ELEV 135 FT
HEIGHTS RELATED TO
THR RWY 26 ELEV 135 FT**

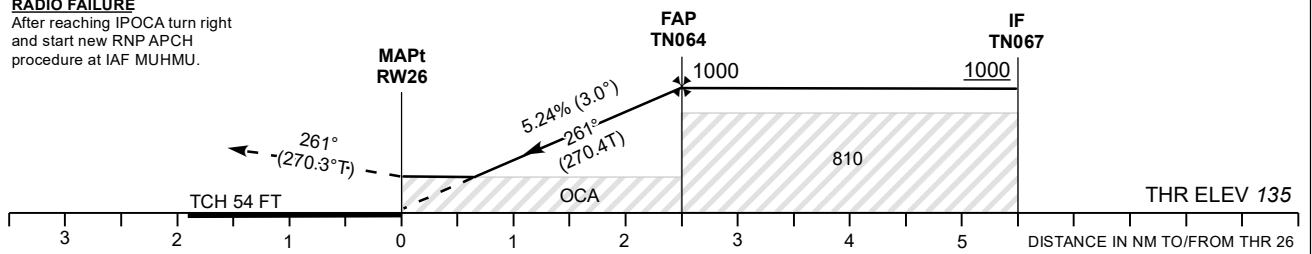
RADAR 127.905
TOWER 135.905
ATIS 124.880 / TEL: +372 625 8210

**LENNART MERI
TALLINN (EETN)
RNP H RWY 26
(CAT H)**



MISSED APPROACH
Climb to TN080 reaching 1000 FT, turn right to IPOCA and remain TWR CH 135.905.

RADIO FAILURE
After reaching IPOCA turn right and start new RNP APCH procedure at IAF MUHMU.



OCA (H)	CAT H
LPV Cat I 4.2%*	366 (231)
LPV Cat I 4.5%*	335 (200)

Final Approach DIST	0.5 NM	1.0 NM	1.5 NM	2.0 NM	2.5 NM	
ELEV	350	510	670	830	990	
HGT	210	370	530	690	850	
	KT	60	80	100	120	140
FAP-MAPt 2.5 NM	MIN:SEC	2:31	1:54	1:31	1:16	1:05
Rate of descent	FT / MIN	310	420	530	630	740

CHANGES: Mag var.