

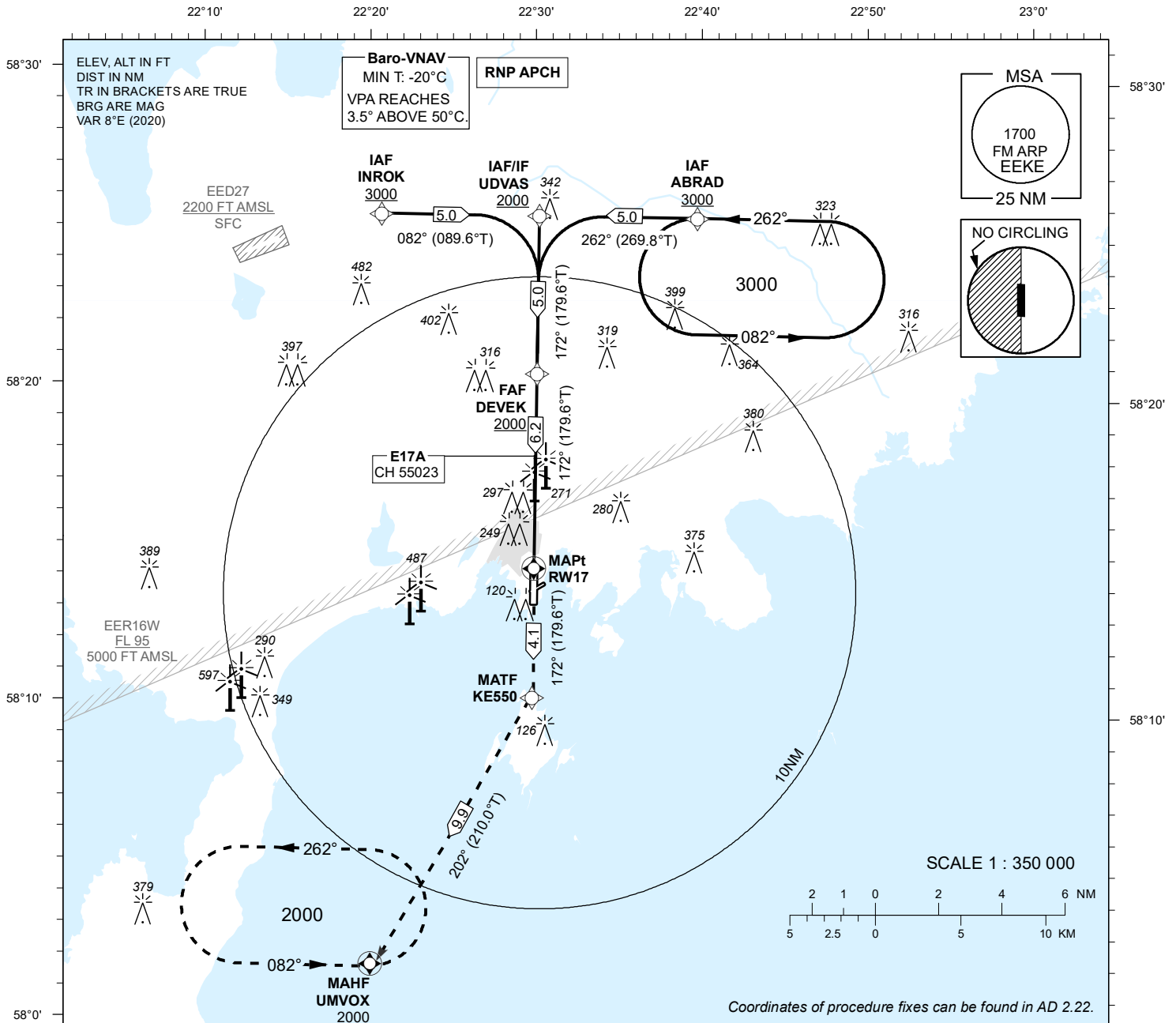
INSTRUMENT APPROACH CHART - ICAO

SBAS
CH 55023
E17A

AD ELEV 15 FT
HEIGHTS RELATED TO
THR RWY 17 ELEV 10 FT

INFORMATION 118.055

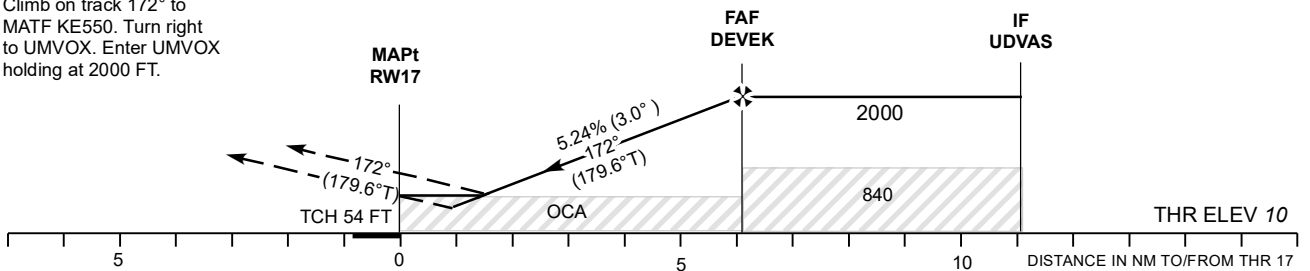
KURESSAARE (EEKE)
RNP RWY 17
(Cat A;B;C)



Coordinates of procedure fixes can be found in AD 2.22.

MISSED APPROACH:
Climb on track 172° to MATF KE550. Turn right to UMVOX. Enter UMVOX holding at 2000 FT.

TRANSITION ALT 5000



Decision heights (DH) below 250 FT shall not be used due to APV approach operation Type A limitations.

CHANGES: Mag var.

OCA (H)	A	B	C	Final Approach DIST	5.0 NM	4.0 NM	3.0 NM	2.0 NM	1.0 NM (LPV)	
LPV	242 (232)	255 (245)	263 (253)	ALT	1660	1340	1030	710	400	
LNAV/VNAV	410 (400)	430 (420)		HGT	1650	1330	1020	700	390	
LNAV	530 (520)			FAF-MAPt 6.2 NM	KT	90	100	120	140	160
Circling E of AD only	610 (600)		710 (700)	Rate of descent	MIN:SEC	4:08	3:43	3:06	2:39	2:20
					FT / MIN	475	530	635	740	850