

LEGEND

- Seaport
- Lighthouse
- INSTR APCH area
- Helicopter route
- Temporary paragliding and hanggliding area MAX ALT 1200 FT
- Paramotoring area
- Exercise and training zone

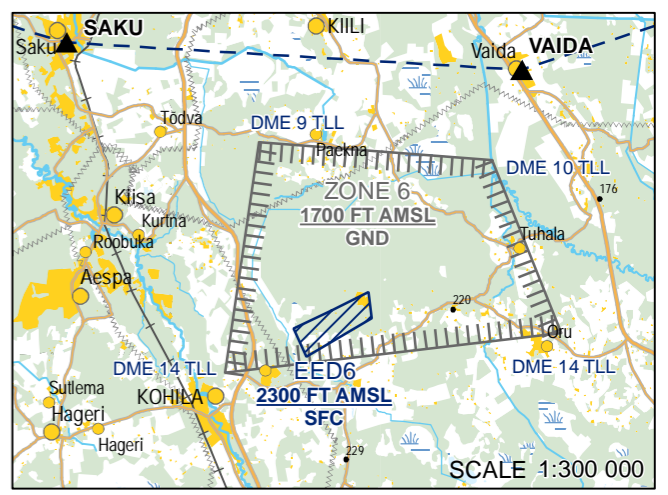
REPORTING POINTS

MUUGA	593142N 0245804E
NAISA	593227N 0243351E
SAKU	591800N 0243934E
VAIDA	591718N 0245834E

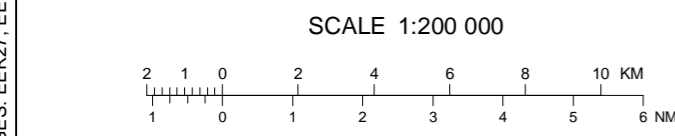
QFE DATA

THR RWY 08	130 FT
THR RWY 26	135 FT

*(EER27, EER32) - The flight restrictions do not extend to the take-off and landing of an aircraft.



CHANGES: EER27, EER28, EER29 and EER32 added.



RADIO DATA*

TALLINN RADAR 127.905 APP (H24)
 TALLINN TOWER 135.905 TWR
 TALLINN INFORMATION 124.880 ATIS
 EMERGENCY 121.500 EMERG

* Flight information service and alerting service in uncontrolled airspace below Tallinn TMA is provided by Tallinn Radar on CH 127.905.

INFORMATION TEL

TWR: +372 625 8260
 ATIS: +372 625 8210