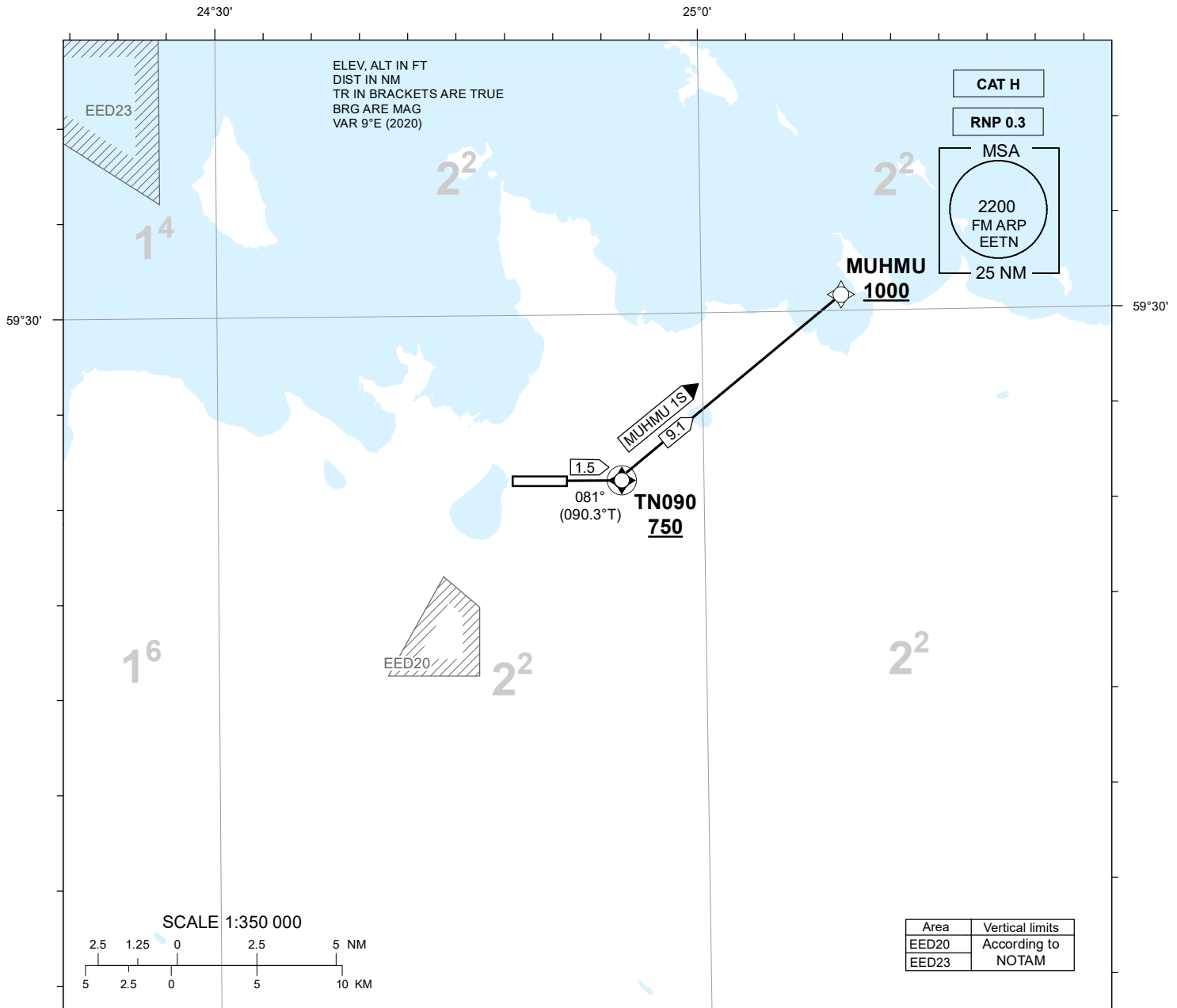


**STANDARD DEPARTURE CHART
INSTRUMENT (SID) - ICAO**

TRANSITION ALTITUDE 5000	TOWER 135.905 RADAR 127.905 ATIS 124.880 / TEL: +372 625 8210
-----------------------------	---------------------------------------------------------------------

**LENNART MERI
TALLINN (EETN)**

RNP SID RWY 08
(CAT H)
MUHMU 1S



Area	Vertical limits
EED20	According to
EED23	NOTAM

NAV SPECIFICATION

RNP 0.3 CAPABILITY REQUIRED. OTHERWISE INFORM ATC.

EN-ROUTE CLEARANCE

CONTACT TALLINN TWR ON CH 135.905 NOT EARLIER THAN 10 MINUTES PRIOR TO EOBT OR ESTIMATED ENGINE START-UP, ADVISE CALL SIGN, STAND/GATE NUMBER AND IF NOT ABLE TO FOLLOW RNP SID.

CODING TABLES AND WPT LIST: REF AD 2.22.

SQUAWK

SQUAWK THE ASSIGNED SSR-CODE IMMEDIATELY PRIOR PUSH-BACK OR TAXI.

INITIAL CLIMB

MNM CLIMB GRADIENT 6,6% (400 FT/NM) UP TO 750 FT MSL. AIRCRAFT UNABLE TO COMPLY SHALL INFORM ATC.

RADIO CONTACT

AFTER TAKE-OFF REMAIN TALLINN TOWER 135.905.

CHANGES: Mag var.