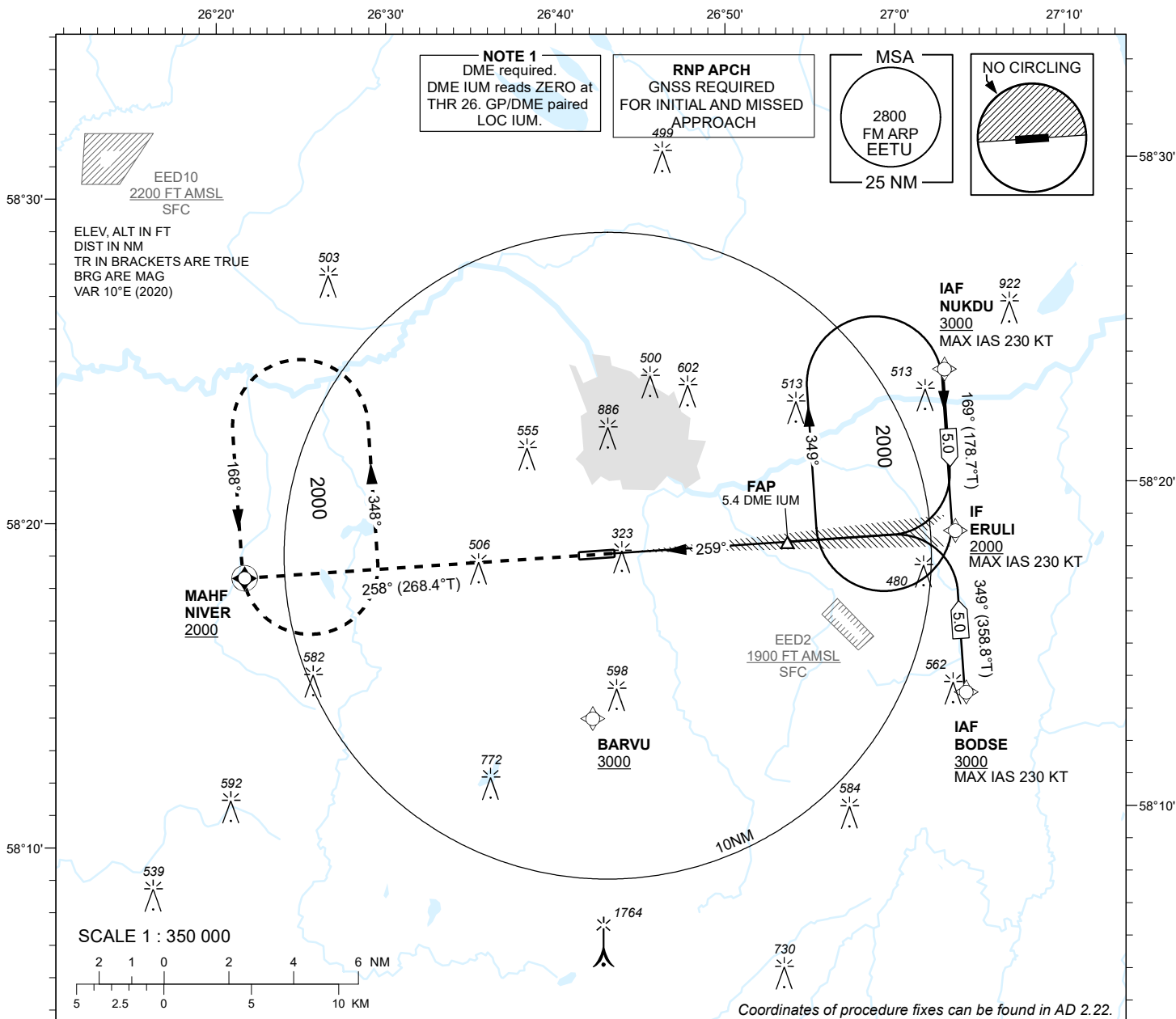


# INSTRUMENT APPROACH CHART - ICAO

AD ELEV 220 FT  
HEIGHTS RELATED TO  
THR RWY 26 ELEV 193 FT

INFORMATION 133.905  
ATIS 123.130 / TEL: +372 730 9212

**TARTU (EETU)**  
**ILS Z RWY 26**  
(CAT A;B;C)



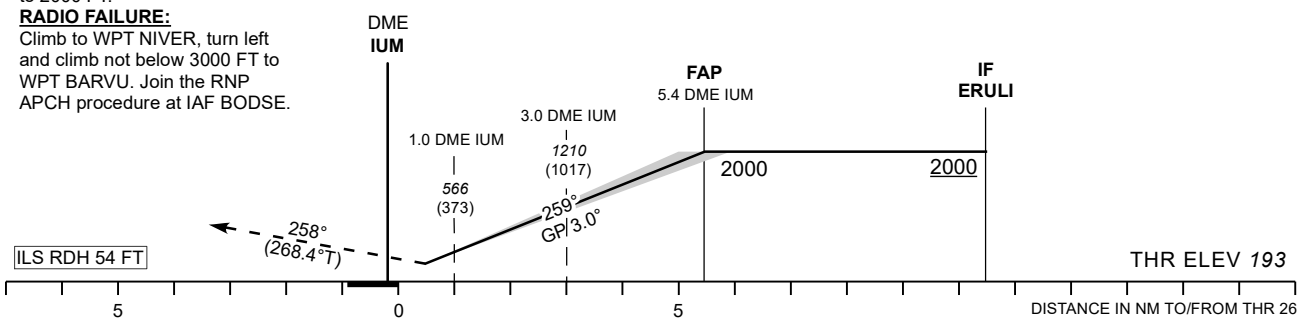
**MISSED APPROACH:**

Climb on track 258° to NIVER. Enter NIVER holding climbing to 2000 FT.

**RADIO FAILURE:**

Climb to WPT NIVER, turn left and climb not below 3000 FT to WPT BARVU. Join the RNP APCH procedure at IAF BODSE.

TRANSITION ALT 5000



CHANGES: Call sign.

NO OFZ RWY 26

OCA (H)	A	B	C		KT	90	100	120	140	160
Straight - in Approach	417 (224)	429 (236)	437 (244)	FAP-THR 5.4 NM	MIN:SEC	3:37	3:15	2:43	2:20	2:02
Circling (S of AD only)	630 (410)	730 (510)	900 (680)	Rate of descent	FT / MIN	480	535	640	745	850