

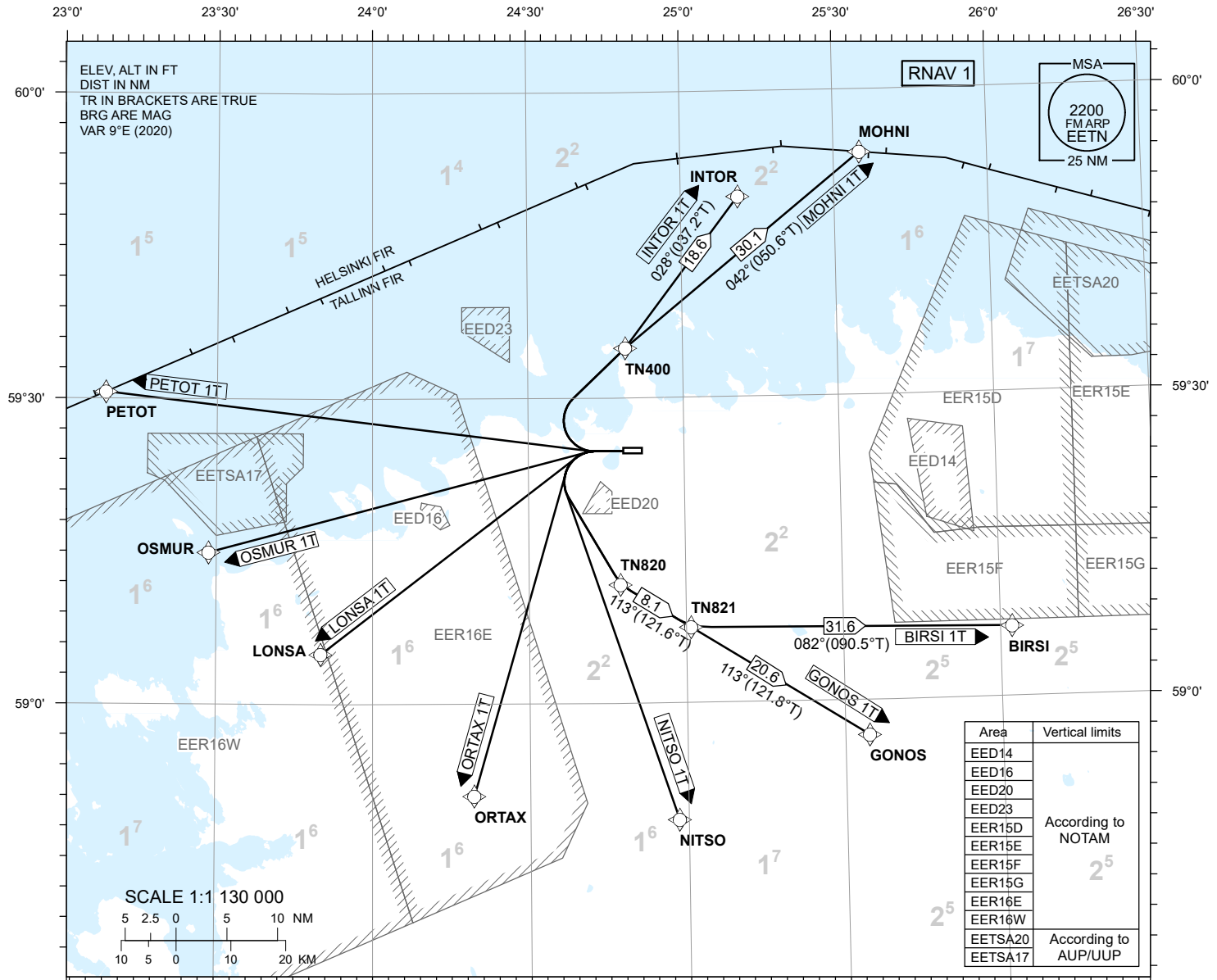
STANDARD DEPARTURE CHART INSTRUMENT (SID) - ICAO

TRANSITION ALTITUDE
5000

TOWER 135.905
RADAR 127.905
ATIS 124.880 / TEL: +372 625 8210

**LENNART MERI
TALLINN (EETN)**
RNAV (GNSS) SID
RWY 26

BIRSI 1T GONOS 1T INTOR 1T LONSA 1T MOHNI 1T
NITSO 1T ORTAX 1T OSMUR 1T PETOT 1T



NAV SPECIFICATION

RNAV 1 CAPABILITY REQUIRED. OTHERWISE INFORM ATC.

EN-ROUTE CLEARANCE

CONTACT TALLINN TWR ON CH 135.905 NOT EARLIER THAN 10 MINUTES PRIOR TO EOBT OR ESTIMATED ENGINE START-UP. ADVISE CALL SIGN, STAND/GATE NUMBER AND IF NOT ABLE TO FOLLOW RNAV SID.

PROC DESCRIPTION AND RNAV-UNABLE INSTRUCTION: REF AD 2.22.

SQUAWK

SQUAWK THE ASSIGNED SSR-CODE IMMEDIATELY PRIOR PUSH-BACK OR TAXI.

INITIAL CLIMB

CLIMB TO 4000 FT MSL OR ASSIGNED ALTITUDE IF LOWER. CLIMB TO A HIGHER LEVEL ONLY WHEN CLEARED BY ATC. MNM CLIMB GRADIENT 6.6% (400 FT/NM) UP TO 4000 FT MSL. AIRCRAFT UNABLE TO COMPLY SHALL INFORM ATC.

RADIO CONTACT

AFTER TAKE-OFF CONTACT TALLINN RADAR 127.905.

LINE-UP / INTERSECTION TAKE-OFF

INFORM TALLINN TWR AS SOON AS POSSIBLE WHEN TAKE-OFF FROM TWY F INTERSECTION IS NOT POSSIBLE AND FULL RUNWAY LENGTH IS REQUIRED.

CHANGES: EED24 removed.