

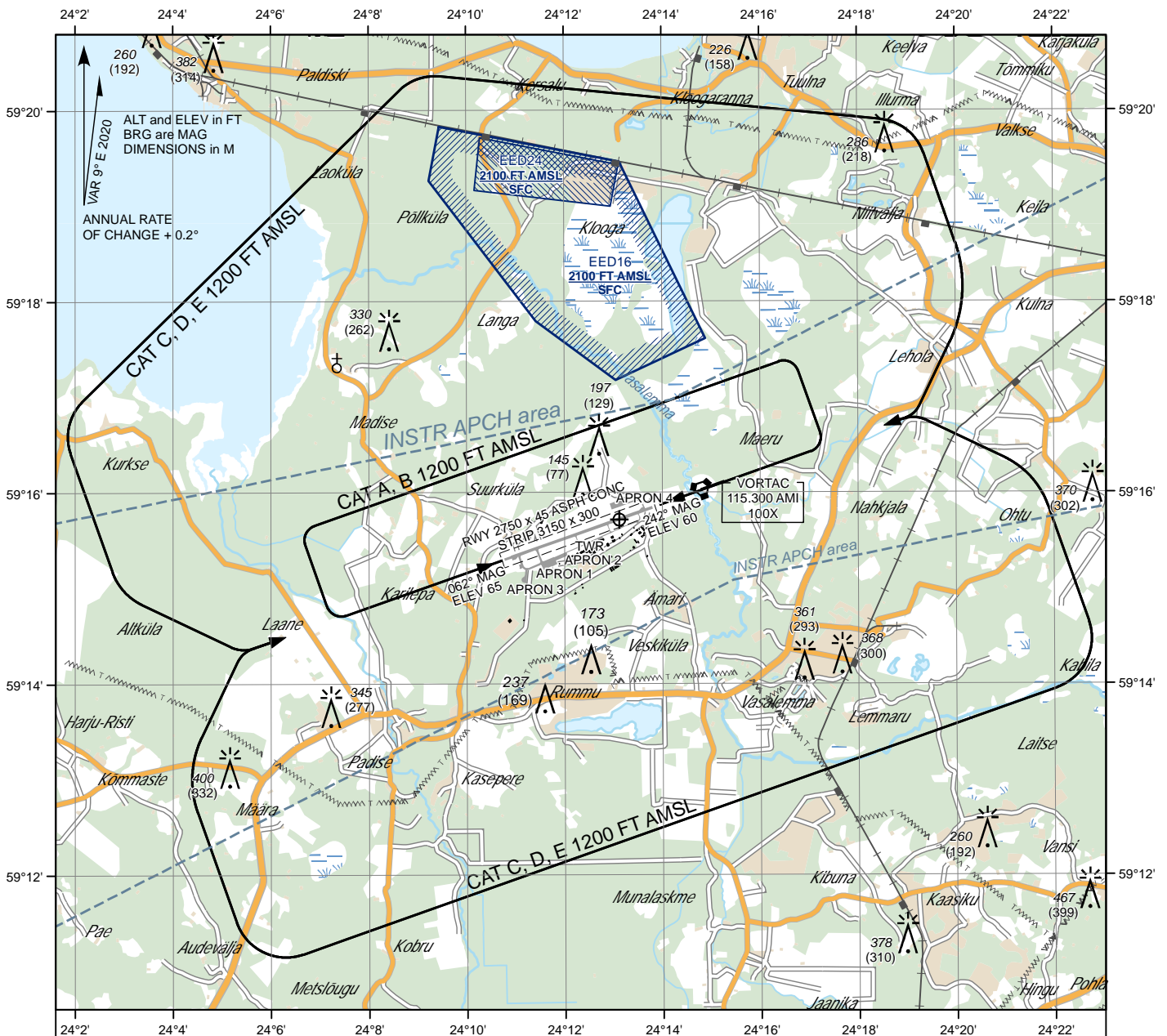
**LANDING
CHART**

59°15'44''N
024°13'07''E

ELEV 68 FT
HEIGHTS RELATED
TO AD ELEV

ÄMARI TWR 122.100
ÄMARI TWR 257.800
ATIS 123.880

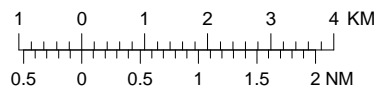
**ÄMARI
MILITARY AERODROME**



AERODROME LIGHTING

PALS-I: **RWY 06** 900 M; LIH
RWY 24 900 M; LIH
 REDL: **RWY 06/24** 2750 M, 60 M, W;
 last 600 M, Y; LIH
 RCLL: **RWY 06/24** 2750 M, 30 M, W;
 FM 2150 M - 2450 M, R/W;
 FM 2450 M, R; LIH
 PAPI: **RWY 06** left 3°00'
RWY 24 right 3°00'
 THR: **RWY 06/24** G; LIH
 RENL: **RWY 06/24** R; LIH
 TDZ: **RWY 06** NIL
RWY 24 NIL
 STWL: **RWY 06/24** 150 M, R;
 TWY: A, B, C, D, E, F, H; EDGE
 CL - NIL
 OBST: R; LIL

SCALE 1:120 000



GROUND SERVICES*

CUST, IMG
 MET
 Fuel: AVGAS 100LL (NATO F-18),
 JET A-1 (NATO F-35)
 * Operational hours: see AIP, EEEI AD 2.3

LDA RWY 06 2750 M
 LDA RWY 24 2750 M

INFORMATION TEL: +372 717 3185

Topography © Estonian Land Board

CHANGES: LM removed, obstacles info.