

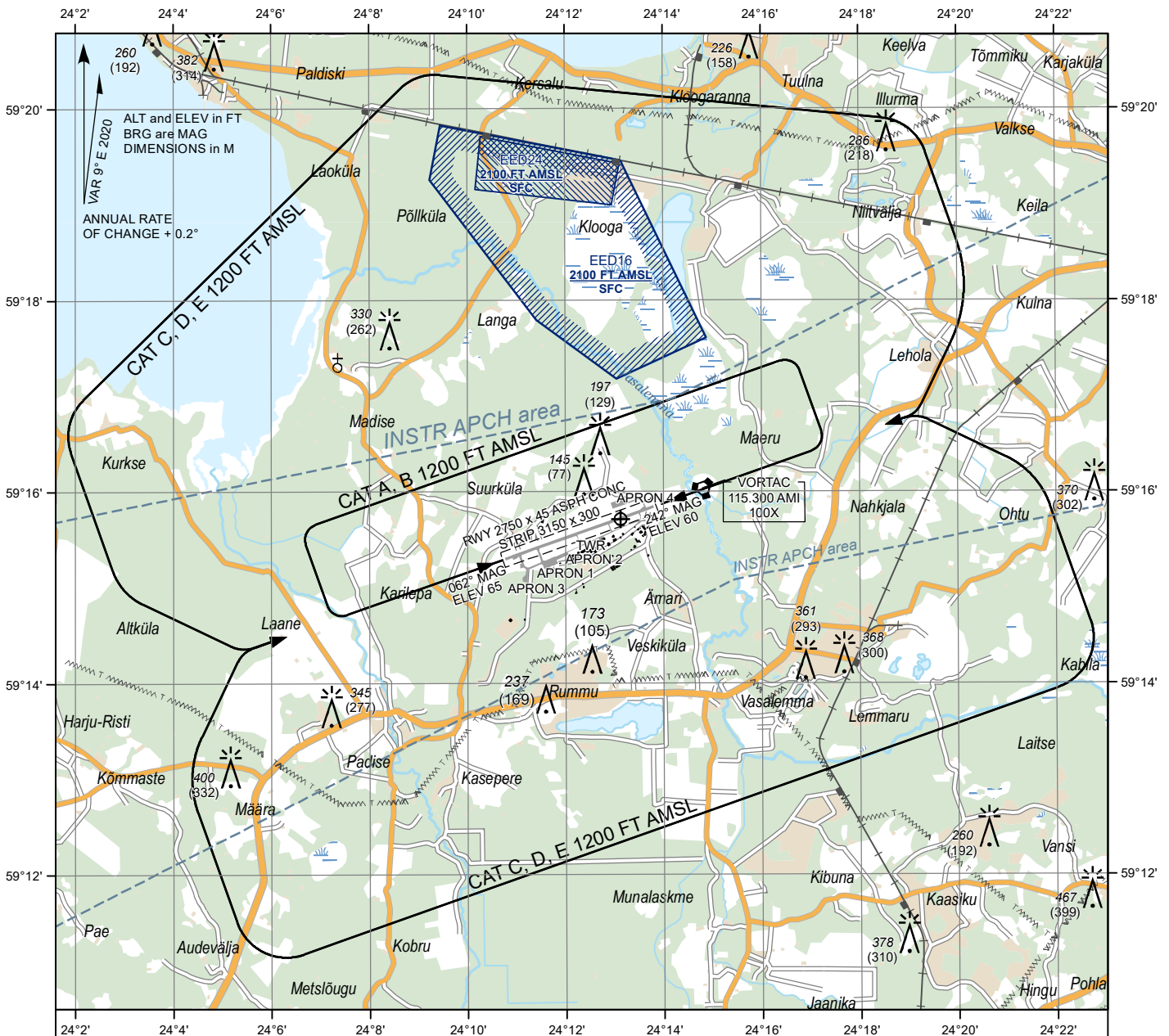
**LANDING  
CHART**

59°15'44''N  
024°13'07''E

**ELEV 68 FT**  
HEIGHTS RELATED  
TO AD ELEV

ÄMARI TWR 122.100  
ÄMARI TWR 257.800  
ATIS 123.880

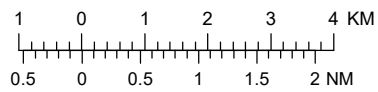
**ÄMARI  
MILITARY AERODROME**



**AERODROME LIGHTING**

PALS-I: **RWY 06** 900 M; LIH  
**RWY 24** 900 M; LIH  
 REDL: **RWY 06/24** 2750 M, 60 M, W;  
 last 600 M, Y; LIH  
 RCLL: **RWY 06/24** 2750 M, 30 M, W;  
 FM 2150 M - 2450 M, R/W;  
 FM 2450 M, R; LIH  
 PAPI: **RWY 06** left 3°00'  
**RWY 24** right 3°00'  
 THR: **RWY 06/24** G; LIH  
 RENL: **RWY 06/24** R; LIH  
 TDZ: **RWY 06** NIL  
**RWY 24** NIL  
 STWL: **RWY 06/24** 150 M, R;  
 TWY: A, B, C, D, E, F, H; EDGE  
 CL - NIL  
 OBST: R; LIL

SCALE 1:120 000



**GROUND SERVICES\***

CUST, IMG  
 MET  
 Fuel: AVGAS 100LL (NATO F-18),  
 JET A-1 (NATO F-35)  
 \* Operational hours: see AIP, EEEI AD 2.3

LDA RWY 06 2750 M  
 LDA RWY 24 2750 M

INFORMATION TEL: +372 717 3415

Topography © Estonian Land Board

CHANGES: Information TEL number.