

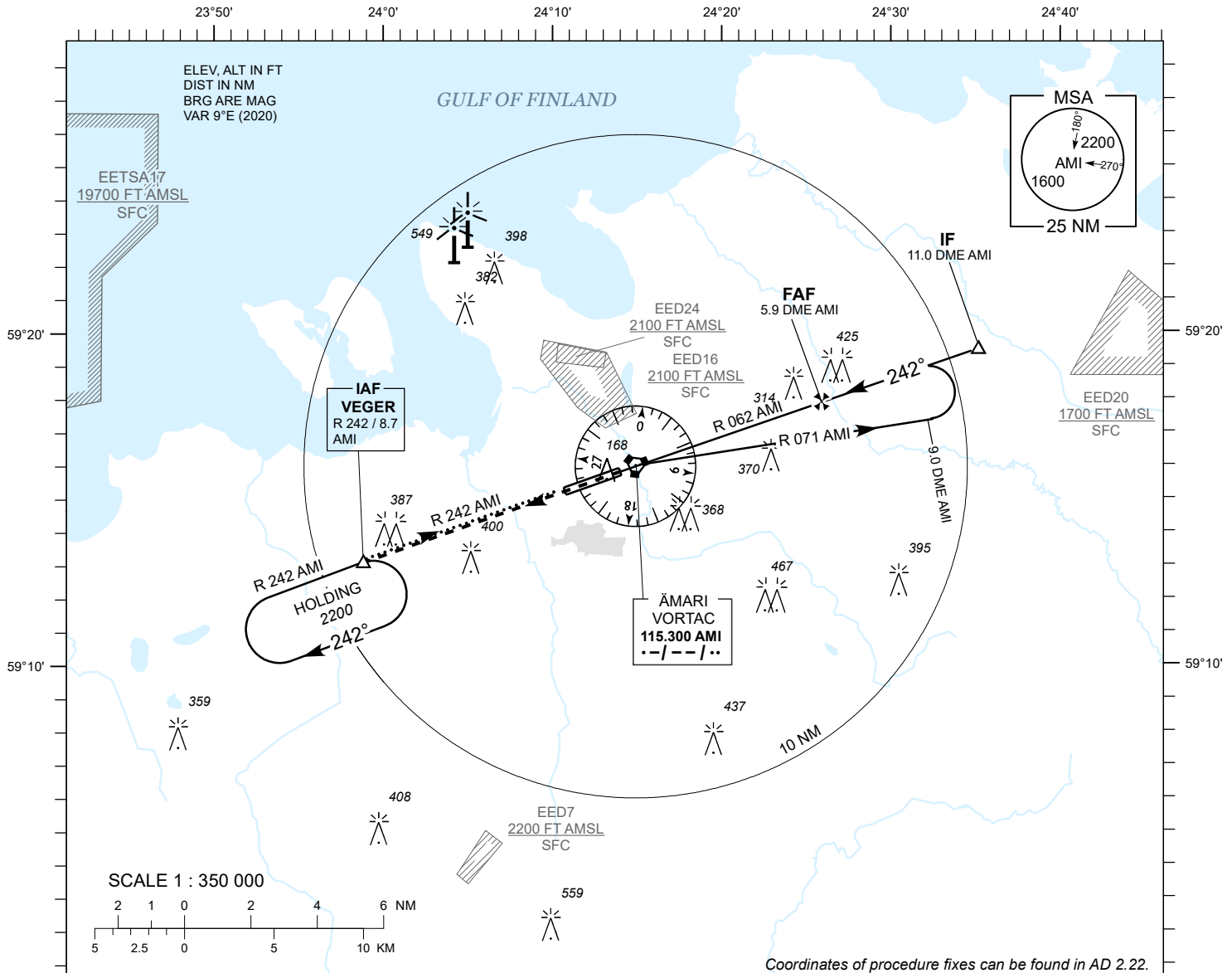
**INSTRUMENT
APPROACH
CHART - ICAO**

AD ELEV 68 FT
HEIGHTS RELATED TO
THR RWY 24 ELEV 60 FT

TALLINN RADAR 127.905
ÄMARI TOWER 122.100 / 257.800

**ÄMARI (EEEE)
MILITARY AERODROME**

VORTAC RWY 24
(CAT A;B)



MISSED APPROACH

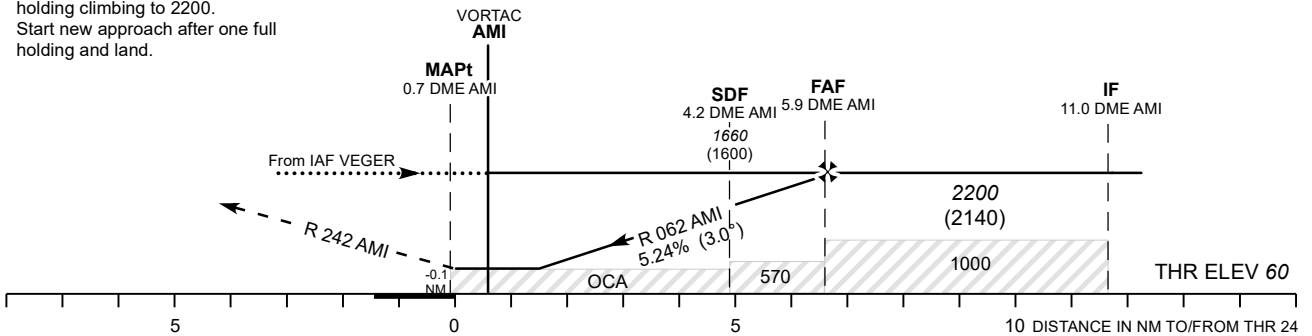
Climb on R 242 AMI to 2200 and expect radar vectors. Contact TALLINN RADAR CH 127.905.

COMMUNICATION FAILURE

Climb straight ahead. Join VEGER holding climbing to 2200. Start new approach after one full holding and land.

TRANSITION ALT 5000

TACAN AMI	2 NM	3 NM	4 NM	5 NM
ALT	970	1290	1540	1920
HGT	(910)	(1230)	(1480)	(1860)



	OCA (H)		Timing not authorized for defining the MAPt.						
	A	B	KT	80	90	100	120	140	
Straight - in Approach	570 (510)		MIN : SEC	4:57	4:24	3:57	3:18	2:49	
Straight - in Approach + SDF	420 (360)		FAF- MAPt 6.6 NM						
Circling	500 (430)	660 (590)	Rate of descent	FT / MIN	425	480	535	640	745

CHANGES: obstacles, approach with SDF, minima added, editorial.