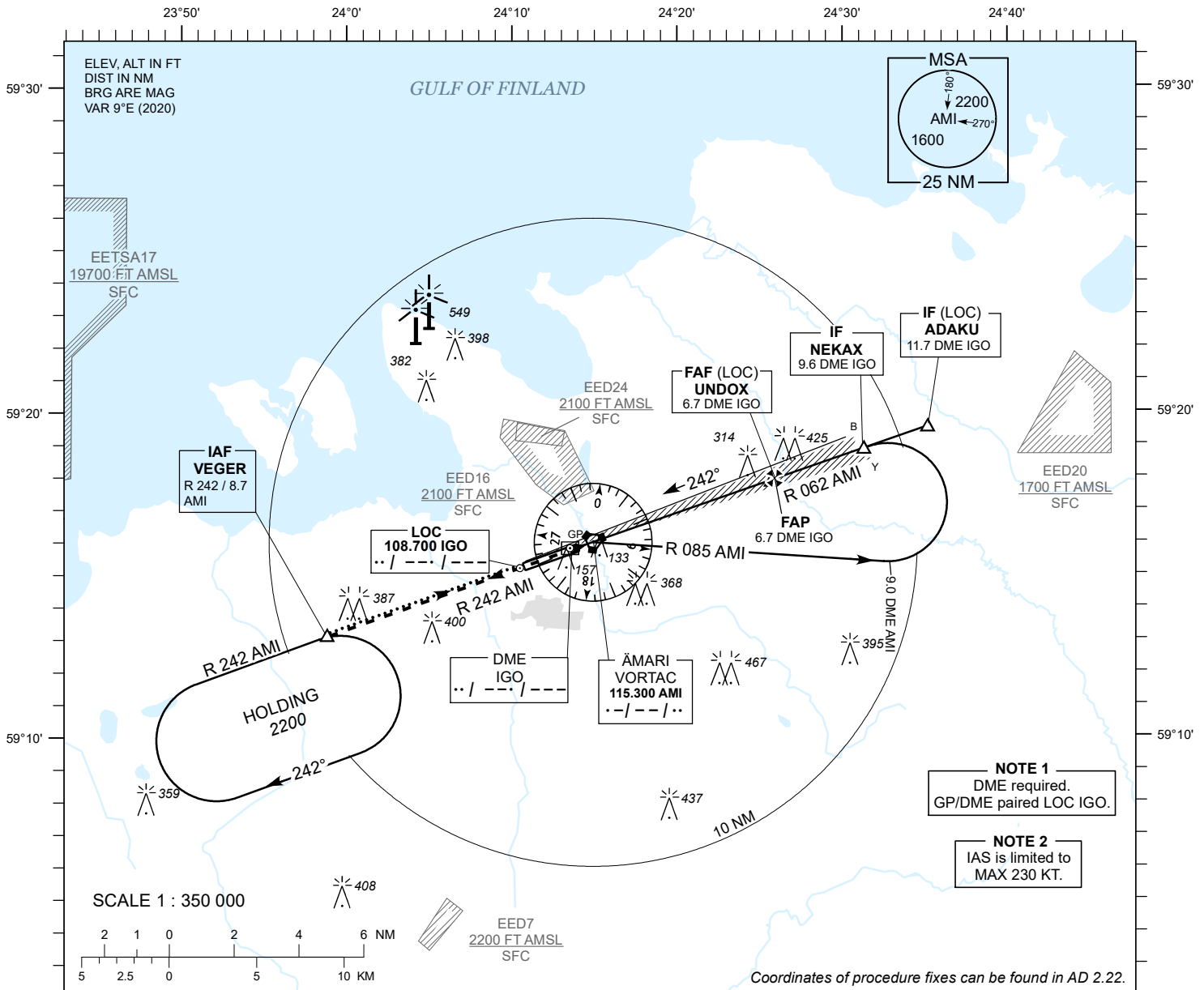


**INSTRUMENT
APPROACH
CHART - ICAO**

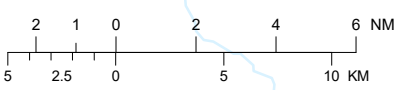
AD ELEV 68 FT
HEIGHTS RELATED TO
THR RWY 24 ELEV 60 FT

TALLINN RADAR 127.905
ÄMARI TOWER 122.100 / 257.800

**ÄMARI (EEEE)
MILITARY AERODROME**
ILS or LOC RWY 24
(CAT C;D;E)



SCALE 1 : 350 000



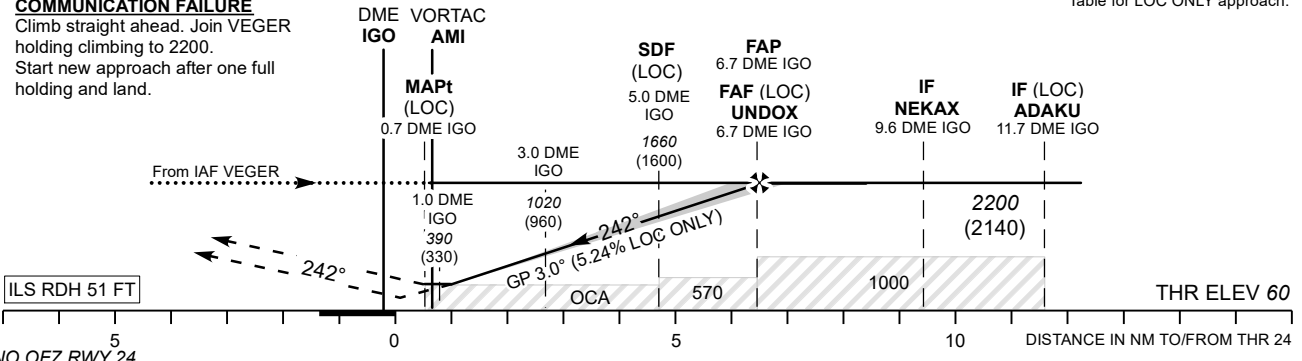
Coordinates of procedure fixes can be found in AD 2.22.

MISSED APPROACH
Climb on track 242 to 2200 and expect radar vectors. Contact TALLINN RADAR CH 127.905.
COMMUNICATION FAILURE
Climb straight ahead. Join VEGER holding climbing to 2200. Start new approach after one full holding and land.

TRANSITION ALT 5000

DME IGO	1 NM	2 NM	3 NM	4 NM	5 NM	6 NM
ALT	390	700	1020	1340	1660	1980
HGT	(330)	(640)	(960)	(1280)	(1600)	(1920)

Table for LOC ONLY approach.



OCA (H)	Timing not authorized for defining the MAPt.			
	CAT I	C	D	E
Straight-in Approach	318 (258)	328 (268)	347 (287)	
LOC ONLY	570 (510)			
LOC ONLY + SDF	400 (340)			
Circling	800 (730)		970 (900)	

LOC ONLY	KT	100	120	140	160	180	200	220
FAF- MAPt 6.0 NM	MIN : SEC	3:36	3:00	2:34	2:15	2:00	1:48	1:38
Rate of descent	FT / MIN	535	640	745	850	960	1065	1170

CHANGES: obstacles, LOC only with SDF minima added, editorial.