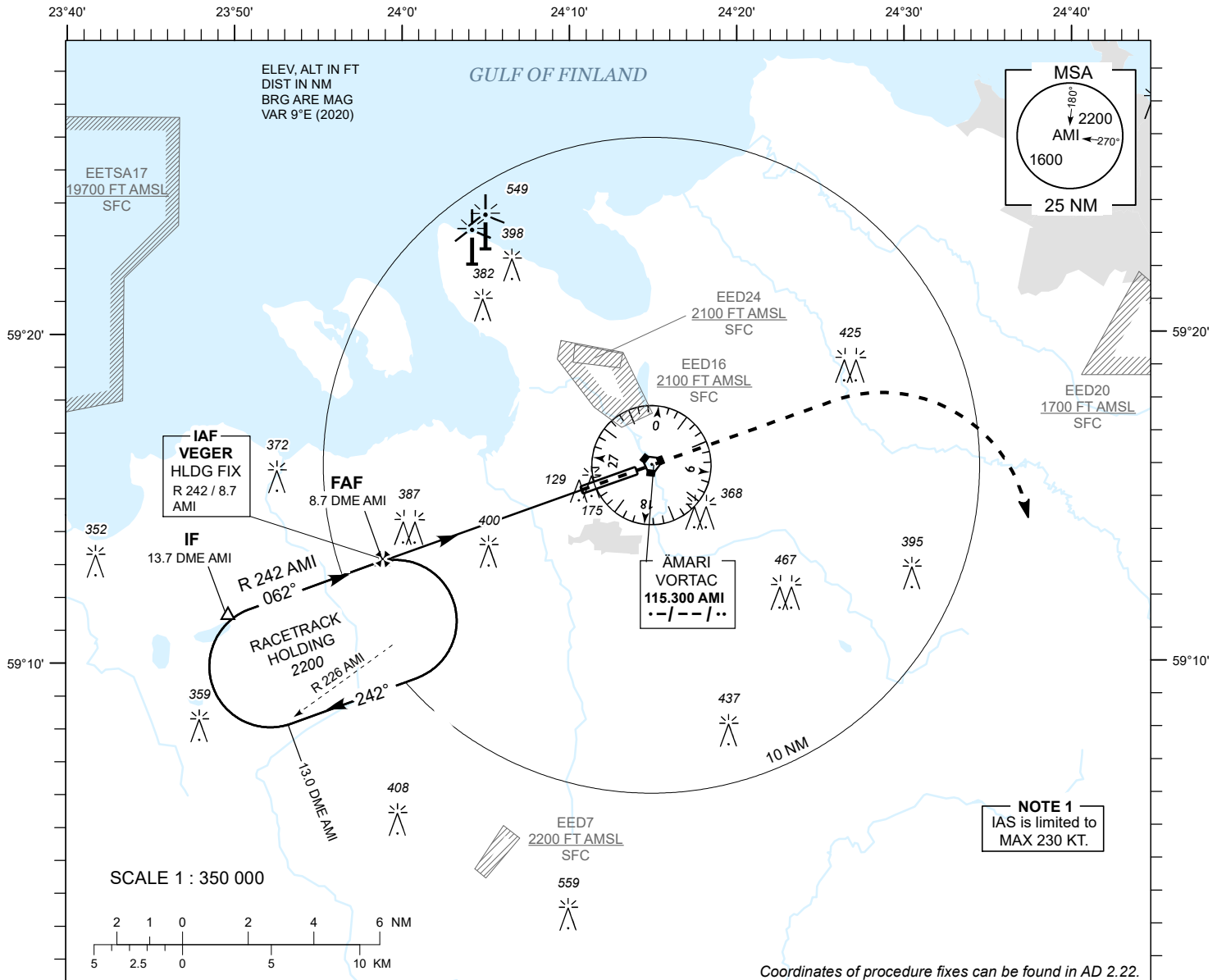


**INSTRUMENT  
APPROACH  
CHART - ICAO**

AD ELEV 68 FT  
HEIGHTS RELATED TO  
THR RWY 06 ELEV 65 FT

TALLINN RADAR 127.905  
ÄMARI TOWER 122.100 / 257.800

**ÄMARI (EEEI)  
MILITARY AERODROME  
VORTAC RWY 06  
(CAT C;D;E)**

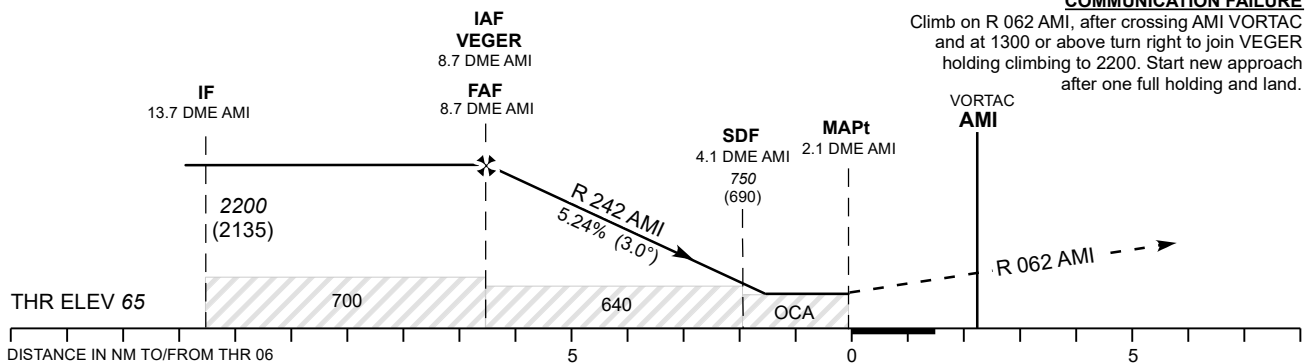


TACAN AMI	8 NM	7 NM	6 NM	5 NM	4 NM
ALT	1980	1670	1350	1030	720
HGT	(1920)	(1610)	(1290)	(970)	(660)

TRANSITION ALT 5000

**MISSED APPROACH**  
Climb on R 062 AMI, after crossing AMI VORTAC and at 1300 or above turn right heading 160 climbing to 2200. Contact TALLINN RADAR CH 127.905.

**COMMUNICATION FAILURE**  
Climb on R 062 AMI, after crossing AMI VORTAC and at 1300 or above turn right to join VEGER holding climbing to 2200. Start new approach after one full holding and land.



	OCA (H)	C	D	E	Timing not authorized for defining the MAPt.								
Straight - in Approach			640 (580)		KT	100	120	140	160	180	200	220	
Straight - in Approach + SDF			430 (370)		FAF- THR 6.6 NM	MIN : SEC	3:58	3:18	2:50	2:29	2:12	1:59	1:48
Circling		800 (730)		970 (900)	Rate of descent	FT / MIN	535	640	745	845	960	1065	1170

CHANGES: obstacles, approach with SDF minima added, editorial.