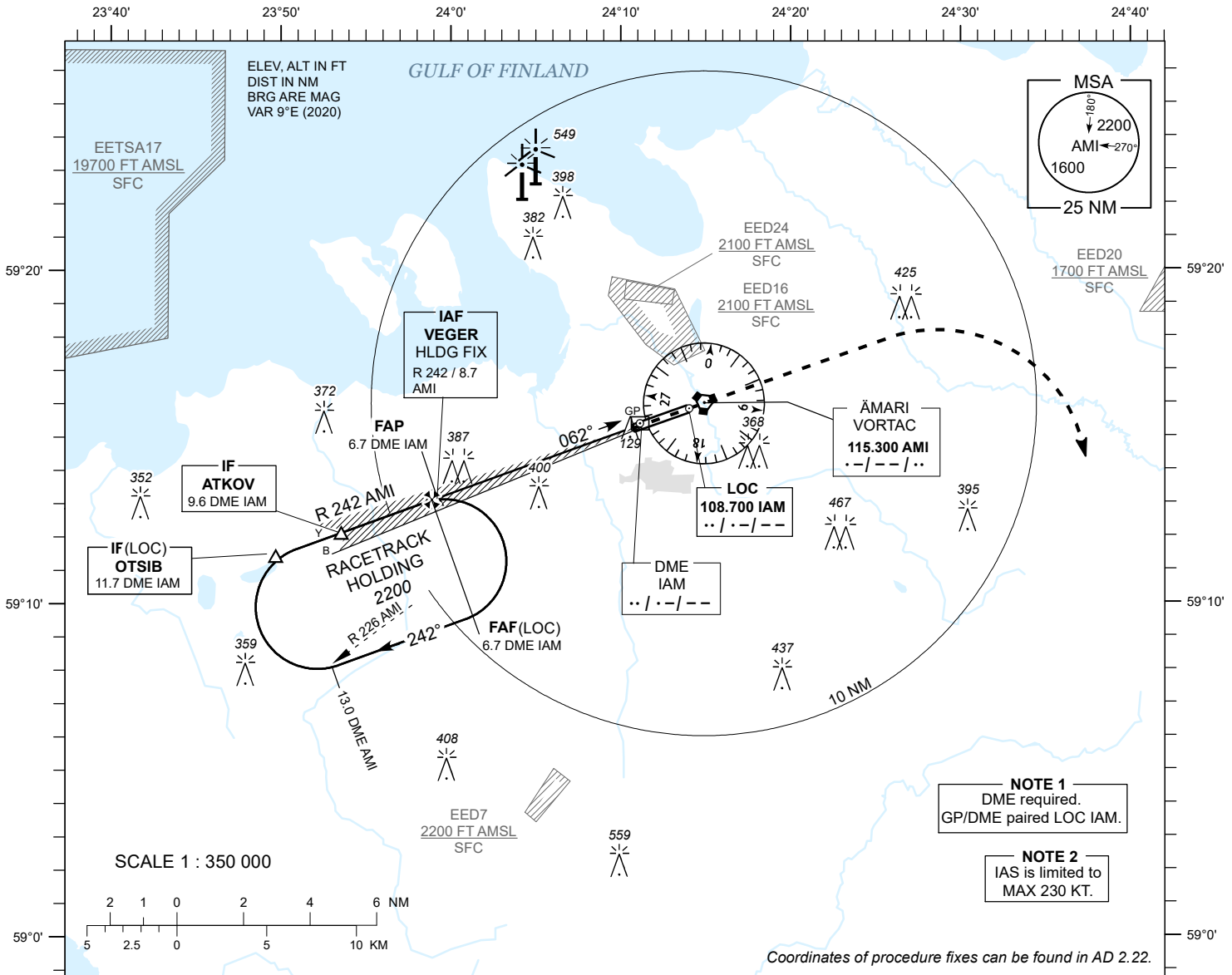


**INSTRUMENT  
APPROACH  
CHART - ICAO**

AD ELEV 68 FT  
HEIGHTS RELATED TO  
THR RWY 06 ELEV 65 FT

TALLINN RADAR 127.905  
ÄMARI TOWER 122.100 / 257.800

**ÄMARI (EEEE)  
MILITARY AERODROME**  
ILS or LOC RWY 06  
(CAT C;D;E)



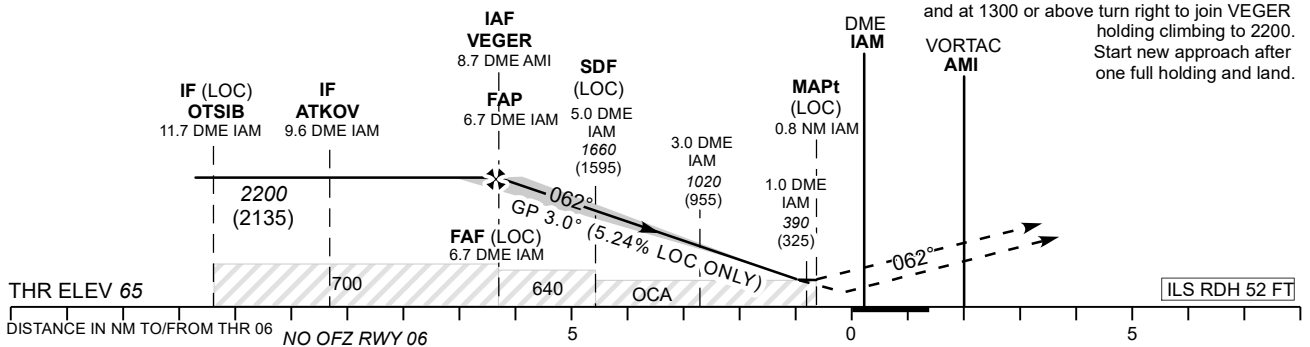
DME IAM	6 NM	5 NM	4 NM	3 NM	2 NM	1 NM
ALT	1980	1660	1340	1020	700	390
HGT	(1920)	(1600)	(1280)	(960)	(640)	(320)

Table for LOC ONLY approach.

**TRANSITION ALT 5000**

**MISSED APPROACH**  
Climb on track 062. After crossing AMI VORTAC and at 1300 or above turn right heading 160 climbing to 2200. Contact TALLINN RADAR CH 127.905.

**COMMUNICATION FAILURE**  
Climb on track 062. After crossing AMI VORTAC and at 1300 or above turn right to join VEGER holding climbing to 2200. Start new approach after one full holding and land.



	DISTANCE IN NM TO/FROM THR 06			
	OCA (H)	C	D	E
Straight-in Approach	CAT I	295 (230)	305 (240)	324 (259)
	LOC ONLY	640 (580)		
	LOC ONLY + SDF	410 (350)		
Circling	800 (730)		970 (900)	

Timing not authorized for defining the MAPt.								
LOC ONLY	KT	100	120	140	160	180	200	220
FAF- MAPt 5.9 NM	MIN : SEC	3:36	3:00	2:34	2:15	2:00	1:48	1:38
Rate of descent	FT / MIN	535	640	745	850	960	1065	1170

CHANGES: OCA, obstacles, LOC only with SDF minima added, editorial.