

# STANDARD DEPARTURE CHART INSTRUMENT (SID) - ICAO

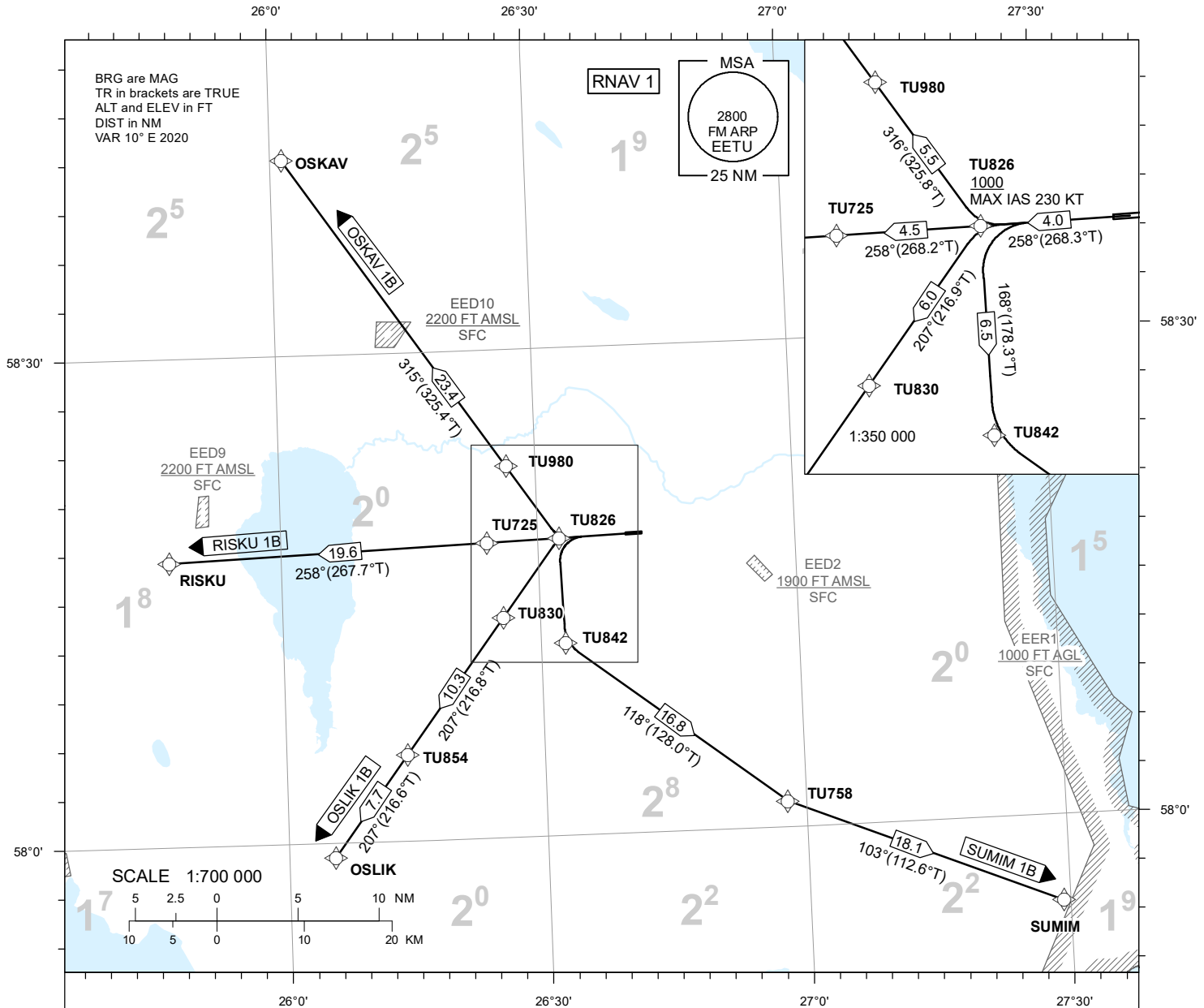
TRANSITION ALTITUDE  
5000

TWR 133.905  
ATIS 123.130 / TEL: +372 730 9212

## TARTU (EETU)

RNAV (GNSS) SID  
RWY 26

OSKAV 1B OSLIK 1B  
RISKU 1B SUMIM 1B



### NAV SPECIFICATION

RNAV 1 CAPABILITY REQUIRED. OTHERWISE INFORM ATC.

### DME/DME OPS

NOT SUPPORTED.

### EN-ROUTE CLEARANCE

CONTACT TARTU TWR ON CH 133.905 NOT EARLIER THAN 10 MINUTES PRIOR TO EOBT OR ESTIMATED ENGINE START-UP, ADVISE CALL SIGN AND IF NOT ABLE TO FOLLOW RNAV SID.

### ADDITIONS TO SID

INSTRUCTIONS CONTAINING DEVIATION FROM SID MAY BE INCLUDED IN THE ATC CLEARANCE PRIOR TO TAKE OFF.

### ROUTES

CODING TABLES AND WPT LIST: REF AD 2.22.

### INITIAL CLIMB

CLIMB TO ASSIGNED ALTITUDE CLEARED BY ATC.

### CONTINGENCY PROCEDURE

LOSS OF RNAV CAPABILITY INFORM ATC TO GET ALTERNATIVE CLEARANCE.

### MINIMUM CLIMB GRADIENTS

DUE TO AIRSPACE RESTRICTIONS:

OSKAV 1B 4,6% (280 FT/NM)

OSLIK 1B, RISKU 1B 5,5% (340 FT/NM)

SUMIM 1B 4,1% (250 FT/NM) UP TO TU826,  
AFTER THAT 3,4% (210 FT/MIN)

AIRCRAFT UNABLE TO COMPLY SHALL  
INFORM ATC.

CHANGES: Mag var.