

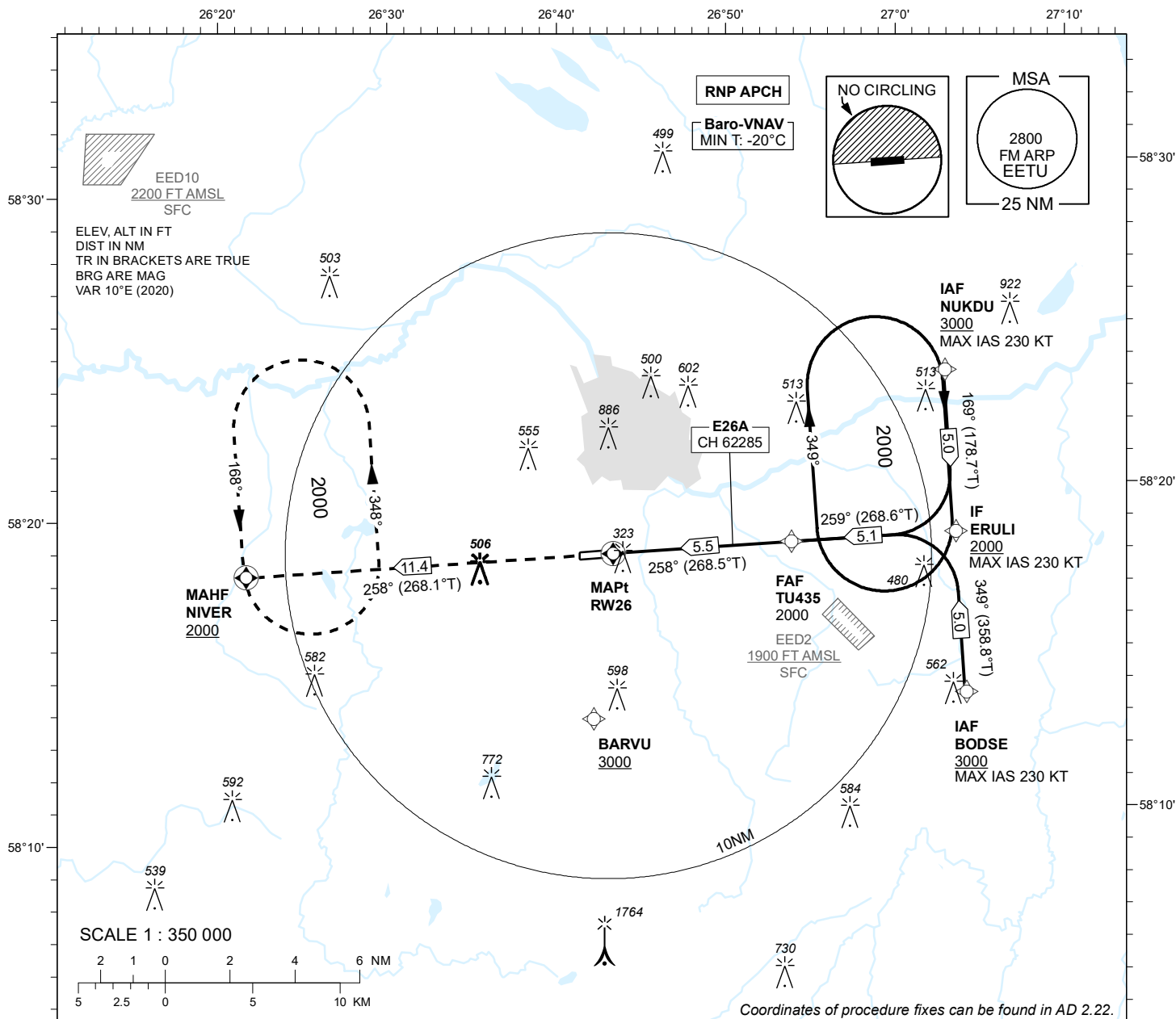
**INSTRUMENT
APPROACH
CHART - ICAO**

**SBAS
CH 62285
E26A**

**AD ELEV 220 FT
HEIGHTS RELATED TO
THR RWY 26 ELEV 193 FT**

TWR 133.905
ATIS 123.130 / TEL: +372 730 9212

**TARTU (EETU)
RNP RWY 26
(Cat A;B;C)**



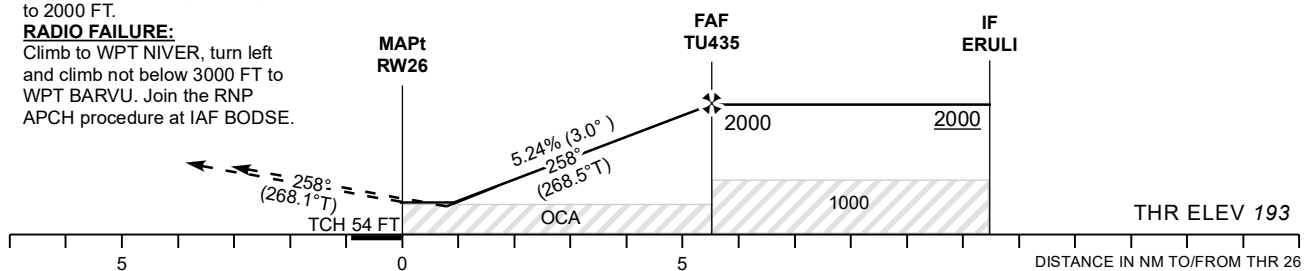
MISSED APPROACH:

Climb on track 258° to NIVER.
Enter NIVER holding climbing
to 2000 FT.

RADIO FAILURE:

Climb to WPT NIVER, turn left
and climb not below 3000 FT to
WPT BARVU. Join the RNP
APCH procedure at IAF BODSE.

TRANSITION ALT 5000



CHANGES: Mag var.

OCA (H)	Final Approach DIST			Distance from THR 26							
	A	B	C	5.0 NM	4.0 NM	3.0 NM	2.0 NM	1.0 NM			
LPV Cat I	417 (224)	429 (236)	437 (244)	1840	1520	1200	880	570			
LNAV/VNAV	430 (240)	440 (250)	450 (260)	1650	1330	1010	690	370			
LNAV	540 (350)			FAF-MAPt 5.5 NM		MIN:SEC	3:40	3:18	2:45	2:22	2:04
Circling (S of AD only)	630 (410)	730 (510)	900 (680)	Rate of descent		FT / MIN	480	535	640	745	850