

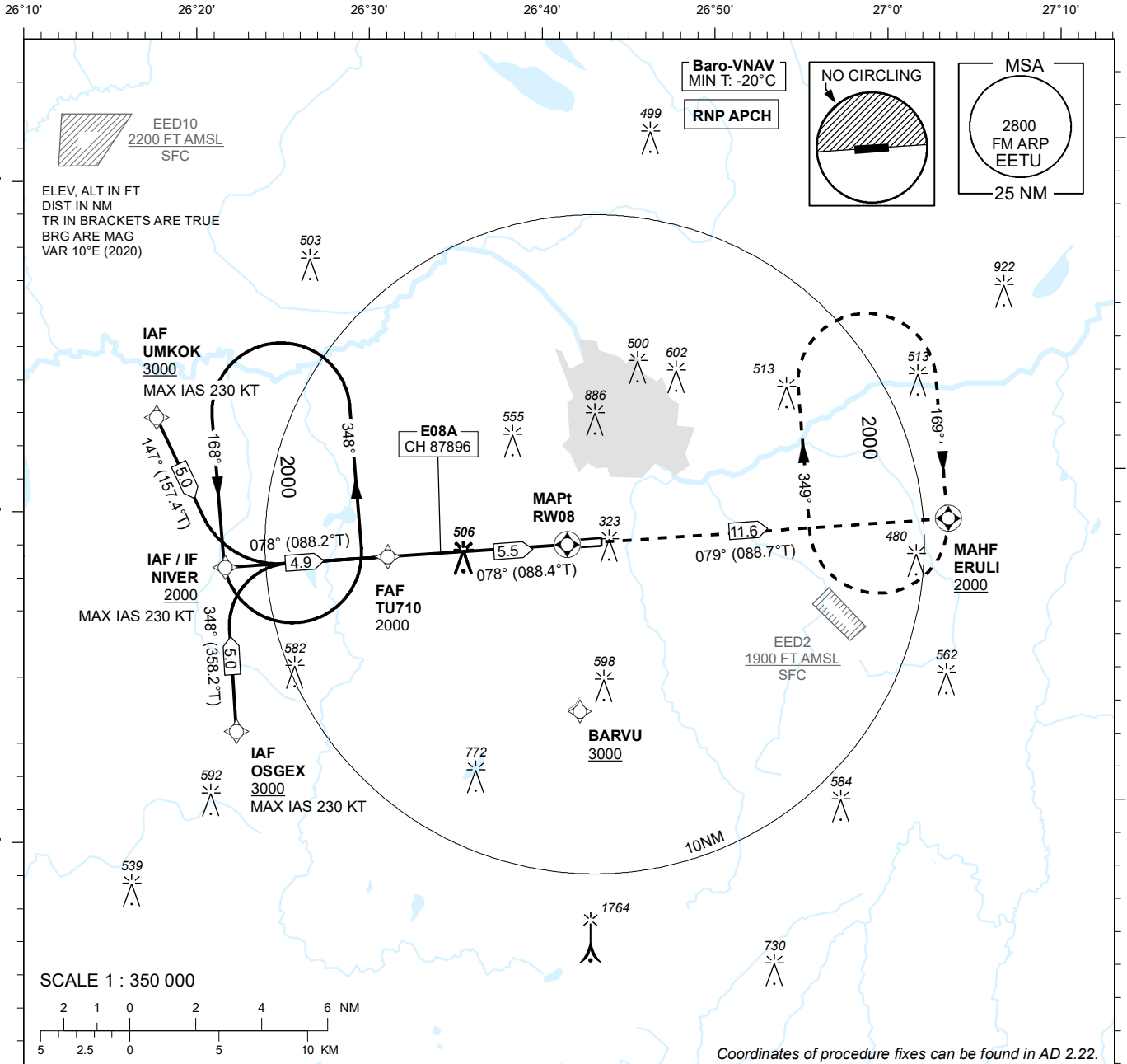
INSTRUMENT APPROACH CHART - ICAO

SBAS
CH 87896
E08A

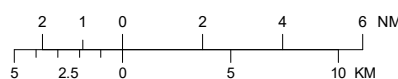
AD ELEV 220 FT
HEIGHTS RELATED TO
THR RWY 08 ELEV 210 FT

TWR 133.905
ATIS 123.130 / TEL: +372 730 9212

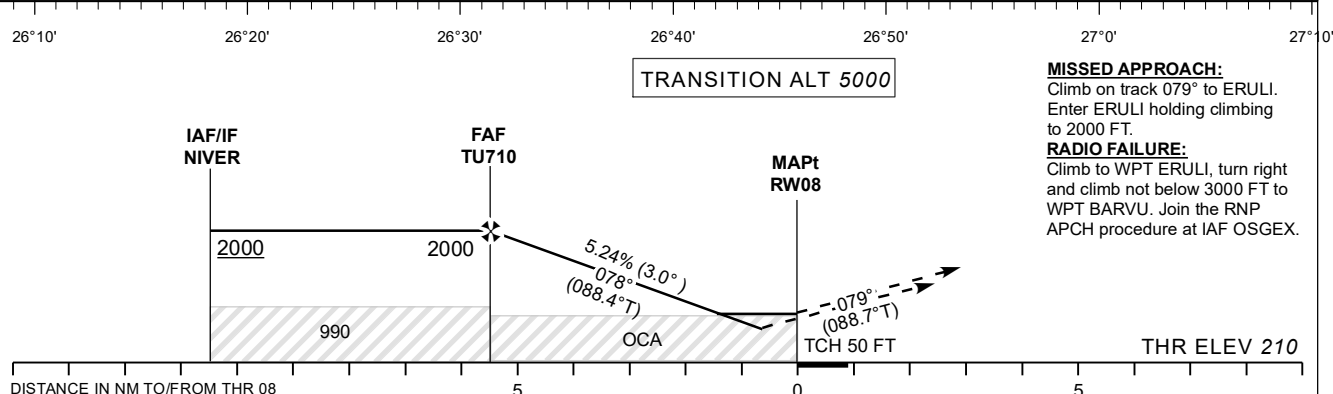
TARTU (EETU)
RNP RWY 08
(Cat A;B;C)



SCALE 1 : 350 000



Coordinates of procedure fixes can be found in AD 2.22.



TRANSITION ALT 5000

MISSED APPROACH:
Climb on track 079° to ERULI. Enter ERULI holding climbing to 2000 FT.

RADIO FAILURE:
Climb to WPT ERULI, turn right and climb not below 3000 FT to WPT BARVU. Join the RNP APCH procedure at IAF OSGEX.

Decision heights (DH) below 250 FT shall not be used due to APV approach operation Type A limitations.

OCA (H)	Final Approach DIST			5.0 NM	4.0 NM	3.0 NM	2.0 NM	1.0 NM
	A	B	C	ALT	HGT	MIN:SEC	FT / MIN	
LPV	417 (207)	429 (219)	437 (227)	1850	1640	1210	1000	580
LNAV/VNAV	380 (170)	400 (190)	410 (200)	1640	1320	1000	690	370
LNAV	680 (470)			KT	90	100	120	140
Circling (S of AD only)	630 (410)	730 (510)	900 (680)	FAF-MAPt 5.5 NM	MIN:SEC	3:40	3:18	2:45
				Rate of descent	FT / MIN	480	535	640
							745	850

CHANGES: Mag var.