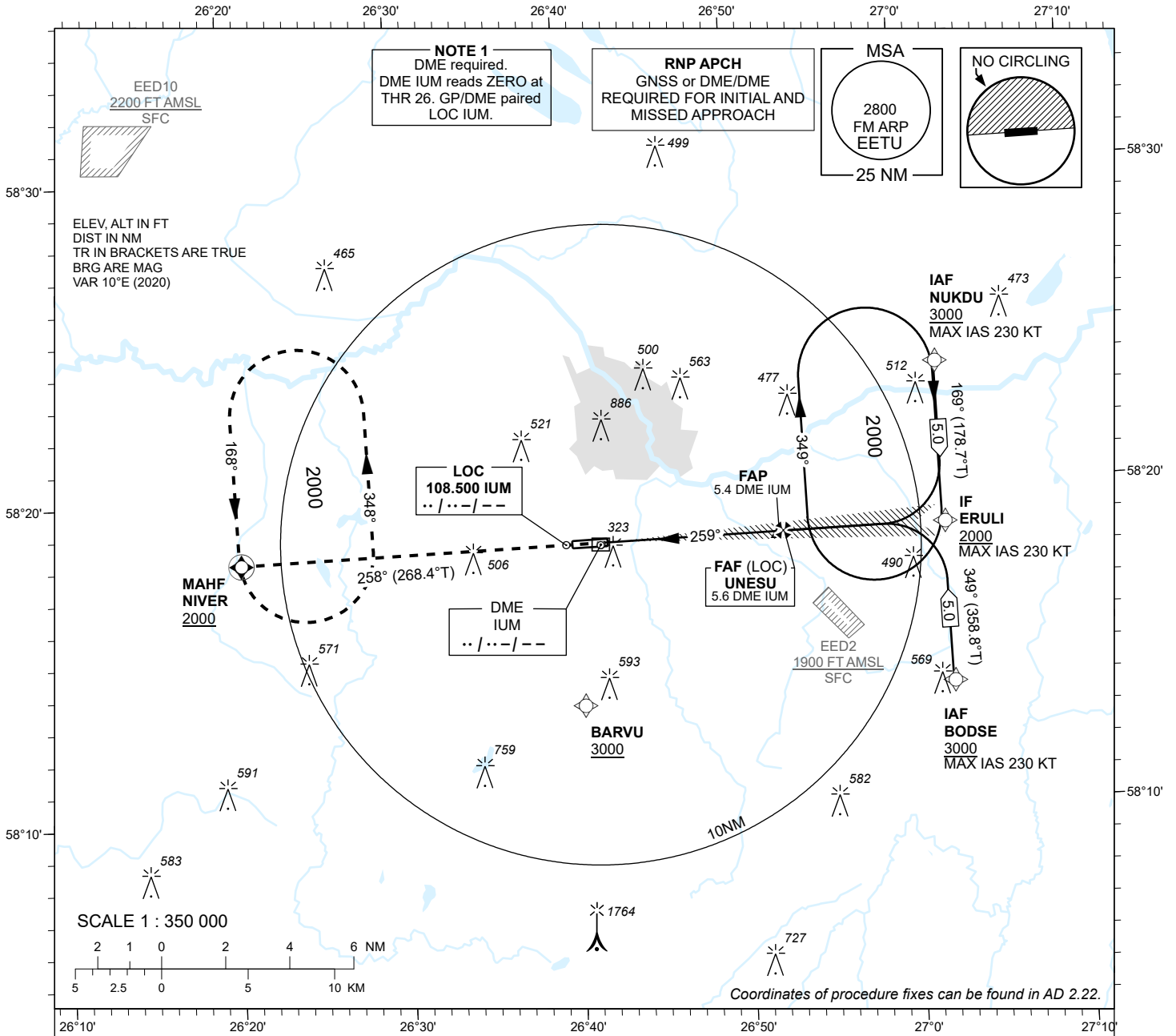


INSTRUMENT APPROACH CHART - ICAO

AD ELEV 220 FT
HEIGHTS RELATED TO
THR RWY 26 ELEV 193 FT

INFORMATION 133.905
ATIS 123.130 / TEL: +372 730 9212

TARTU (EETU)
ILS or LOC RWY 26
(CAT A;B;C)



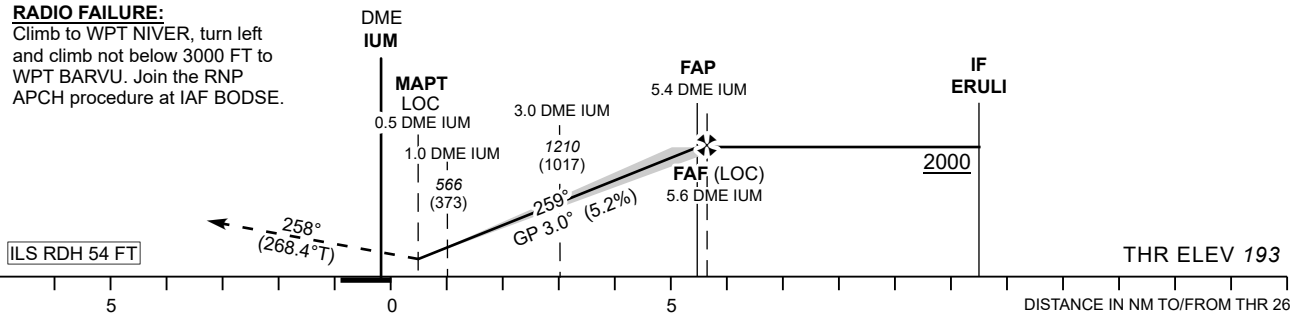
MISSED APPROACH:
Climb on track 258° to NIVER.
Enter NIVER holding climbing
to 2000 FT.

RADIO FAILURE:
Climb to WPT NIVER, turn left
and climb not below 3000 FT to
WPT BARVU. Join the RNP
APCH procedure at IAF BODSE.

TRANSITION ALT 5000

DME IUM	DME 2	DME 3	DME 4	DME 5
ALT	880	1200	1520	1800
HGT	(690)	(1010)	(1330)	(1610)

Table for LOC ONLY approach.



NO OFZ RWY 26

OCA (H)		A	B	C	Timing not authorized for defining the MAPT.						
Straight-in Approach	CAT I	417 (224)	429 (236)	437 (244)	GS	KT	90	100	120	140	160
	LOC ONLY	570 (380)			FAF-MAPT 5.1 NM	MIN:SEC	3:24	3:04	2:33	2:11	1:55
Circling (S of AD only)		630 (410)	730 (510)	900 (680)	Rate of descent	FT / MIN	475	530	635	740	850

CHANGES: SUP 08/2024 incorporated.