

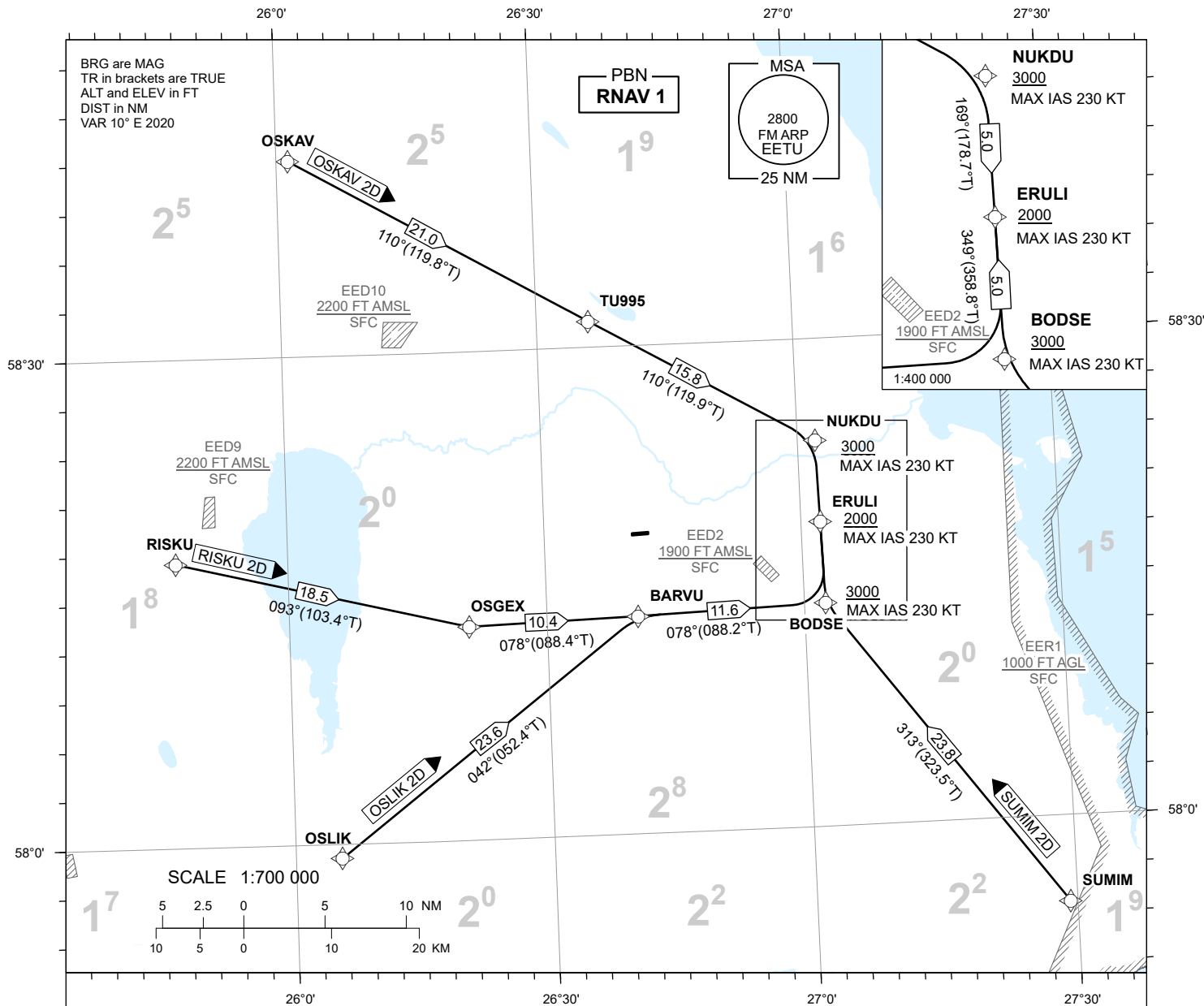
STANDARD ARRIVAL CHART INSTRUMENT (STAR) - ICAO

TRANSITION ALTITUDE
5000

TARTU (EETU)
RNAV (DME/DME or GNSS) STAR
RWY 26

INFORMATION 133.905
ATIS 123.130 / TEL: +372 730 9212

OSKAV 2D OSLIK 2D
RISKU 2D SUMIM 2D



NAV SPECIFICATION

RNAV 1 CAPABILITY REQUIRED.

DESCENT

IF TRAFFIC PERMITS, PLAN CONTINUOUS DESCENT ARRIVAL (CDA) ACCORDING TO STAR.

WPT CONSTRAINTS

ALT/FL/ SPEED CONSTRAINTS MUST ALWAYS BE FOLLOWED AS PUBLISHED.

ROUTES

CODING TABLES AND WPT LIST: REF AD 2.22.

RADIO COMMUNICATION FAILURE

IN CASE OF RADIO COMMUNICATION FAILURE SEE AD 2.22.

TEMPERATURE CORRECTION

TEMPERATURE CORRECTION IS ADDED TO MSA BY PILOT IF GND TEMPERATURE FALLS BELOW -0°C.

CHANGES: SUP 08/2024 incorporated.