

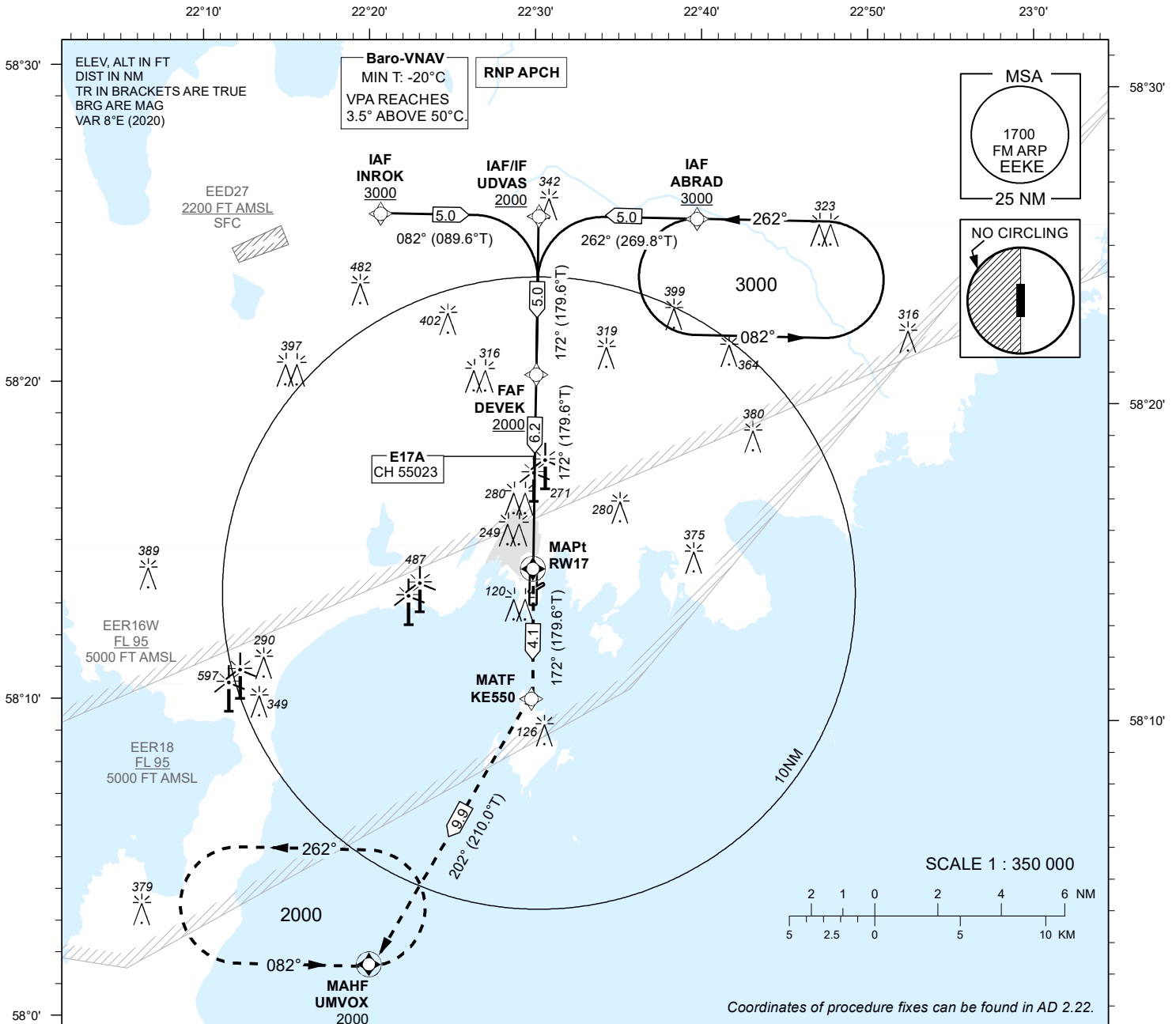
INSTRUMENT APPROACH CHART - ICAO

SBAS
CH 55023
E17A

AD ELEV 15 FT
HEIGHTS RELATED TO
THR RWY 17 ELEV 10 FT

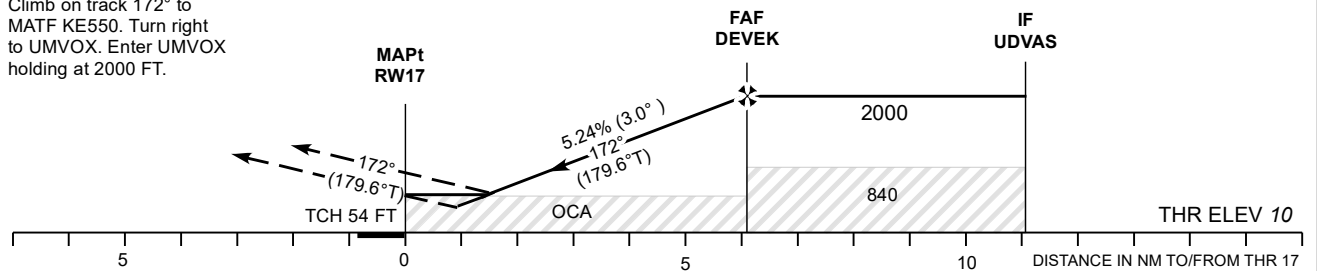
INFORMATION 118.055

KURESSAARE (EEKE)
RNP RWY 17
(CAT A;B;C)



MISSED APPROACH:
Climb on track 172° to MATF KE550. Turn right to UMVOX. Enter UMVOX holding at 2000 FT.

TRANSITION ALT 5000



CHANGES: EER18 added.

Decision heights (DH) below 250 FT shall not be used due to APV approach operation Type A limitations.

OCA (H)	Final Approach DIST			5.0 NM	4.0 NM	3.0 NM	2.0 NM	1.0 NM (LPV)			
	A	B	C	ALT	HGT	KT	90	100	120	140	160
LPV	242 (232)	255 (245)	263 (253)	1660	1650	1340	1330	1030	1020	710	400
LNAV/VNAV	410 (400)	430 (420)			KT		90	100	120	140	160
LNAV	530 (520)			FAF-MAPt 6.2 NM	MIN:SEC	4:08	3:43	3:06	2:39	2:20	
Circling E of AD only	610 (600)		710 (700)	Rate of descent	FT / MIN	475	530	635	740	850	