

INSTRUMENT APPROACH CHART - ICAO

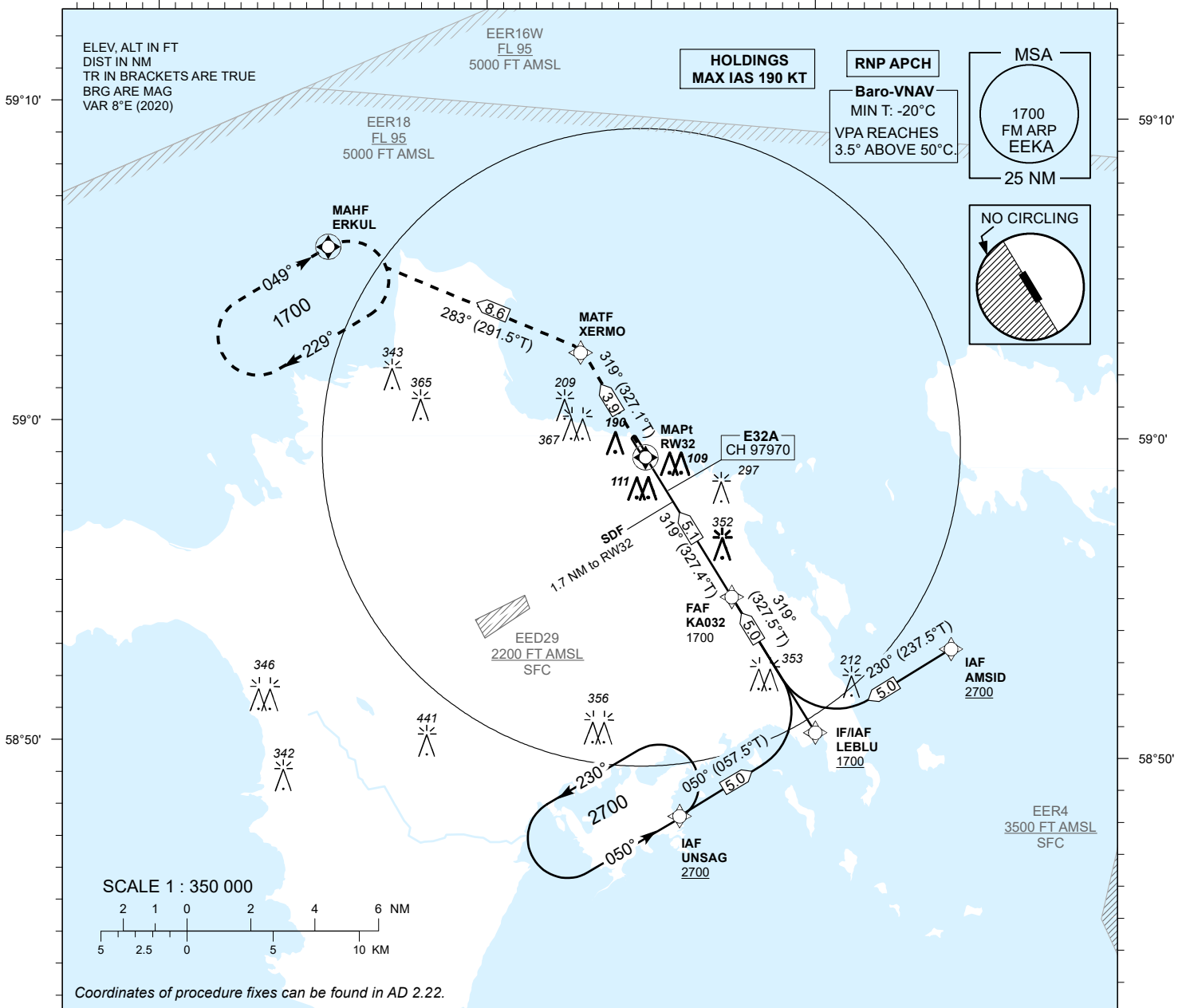
SBAS
CH 97970
E32A

AD ELEV 18 FT
HEIGHTS RELATED TO
THR RWY 32 ELEV 15 FT

INFORMATION 133.405

KÄRDLA (EEKA)
RNP RWY 32
(CAT A;B;C)

22°20' 22°30' 22°40' 22°50' 23°0' 23°10'

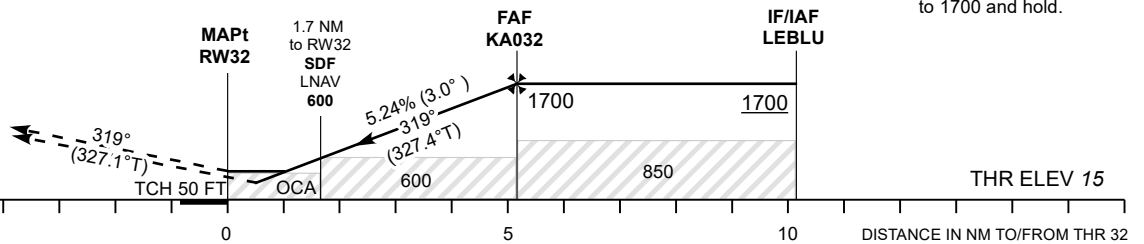


Coordinates of procedure fixes can be found in AD 2.22.

22°20' 22°30' 22°40' 22°50' 23°0' 23°10'

TRANSITION ALT 5000

MISSED APPROACH:
Climb on track 319° to MATF XERMO. Turn left to MAHF ERKUL climbing to 1700 and hold.



Decision heights (DH) below 250 FT shall not be used due to APV approach operation Type A limitations.

OCA (H)	Final Approach DIST			5.0 NM	4.0 NM	3.0 NM	2.0 NM	1.0 NM
	A	B	C	ALT	HGT	MIN:SEC	MIN:SEC	MIN:SEC
LPV	232 (217)	245 (230)	253 (238)	1660	1340	1020	700	380
LNAV/VNAV	239 (224)	252 (237)	266 (251)	1650	1330	1010	690	370
LNAV	360 (350)			KT	90	100	120	140
Circling E of AD only	420 (410)	510 (500)	750 (740)	FAF-MAPt 5.1 NM	MIN:SEC	3:26	3:05	2:35
				Rate of descent	FT / MIN	480	535	640
						745	850	

CHANGES: EER18 added.