

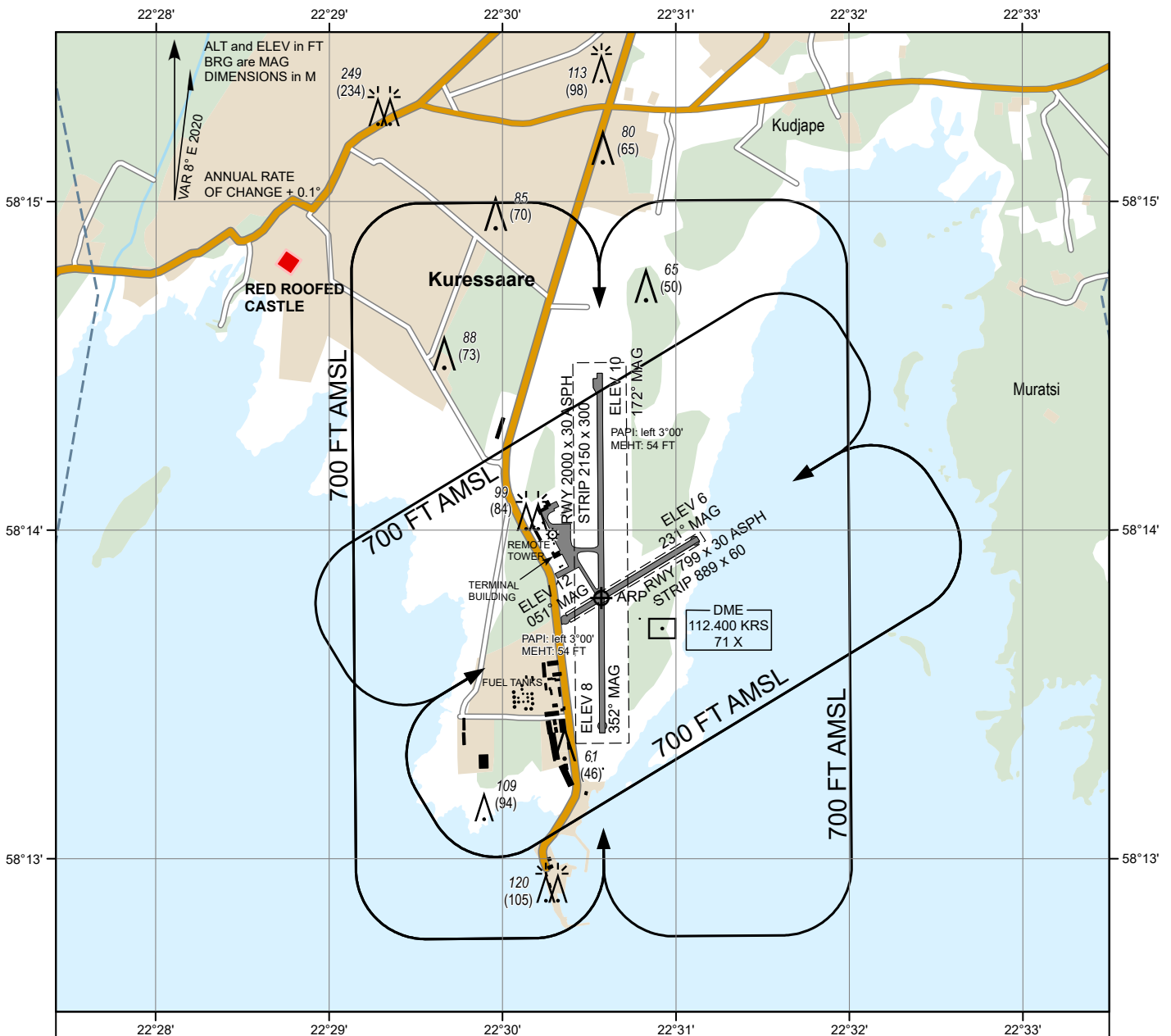
**LANDING
CHART**

58°13'48''N
022°30'34''E

ELEV 15 FT
HEIGHTS RELATED
TO AD ELEV

INFORMATION 118.055

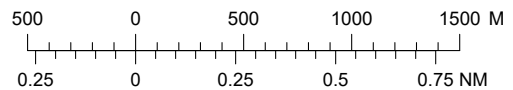
KURESSAARE



AERODROME LIGHTING

PALS-I: RWY 17	720 M; LIH
ALS: RWY 35	180 M; LIH
REDL: RWY 17	2000 M, 60 M, W; last 600 M, Y; LIH
RWY 35	2000 M, 60 M, W; last 600 M, Y; LIH
RWY 05/23	NIL
PAPI: RWY 17/35	left 3°00'
THR: RWY 17/35	G; LIH
RWY 05/23	NIL
RENL: RWY 17/35	R; LIH
RWY 05/23	NIL
TWY: EDGE	B; LIL
OBST: A/B	R; LIL

SCALE 1:35 000



GROUND SERVICES*

CUST, IMG
MET
Fuel: JET A1, 100LL
* Operational hours: see AIP, EEKE AD 2.3

LDA RWY 17	2000 M
LDA RWY 35	2000 M
LDA RWY 05	799 M
LDA RWY 23	799 M

Topography © Estonian Land Board

CHANGES: SUP 07/2024 incorporated.