

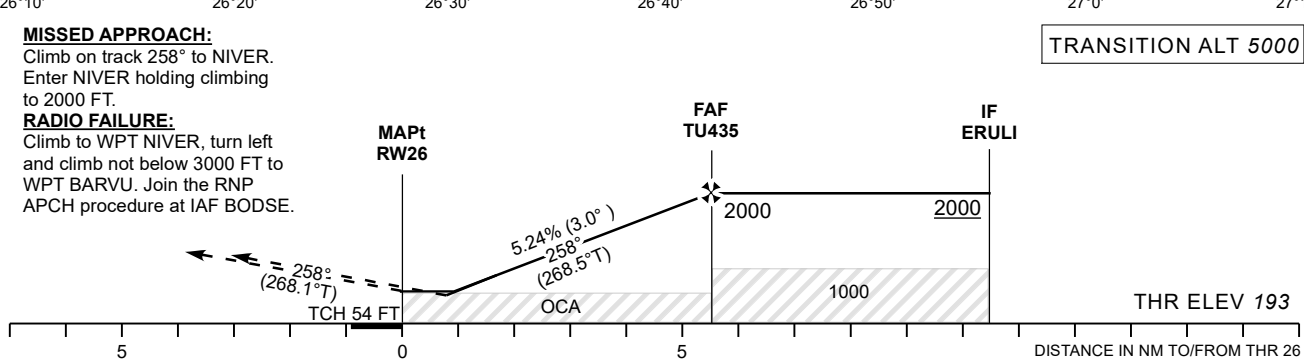
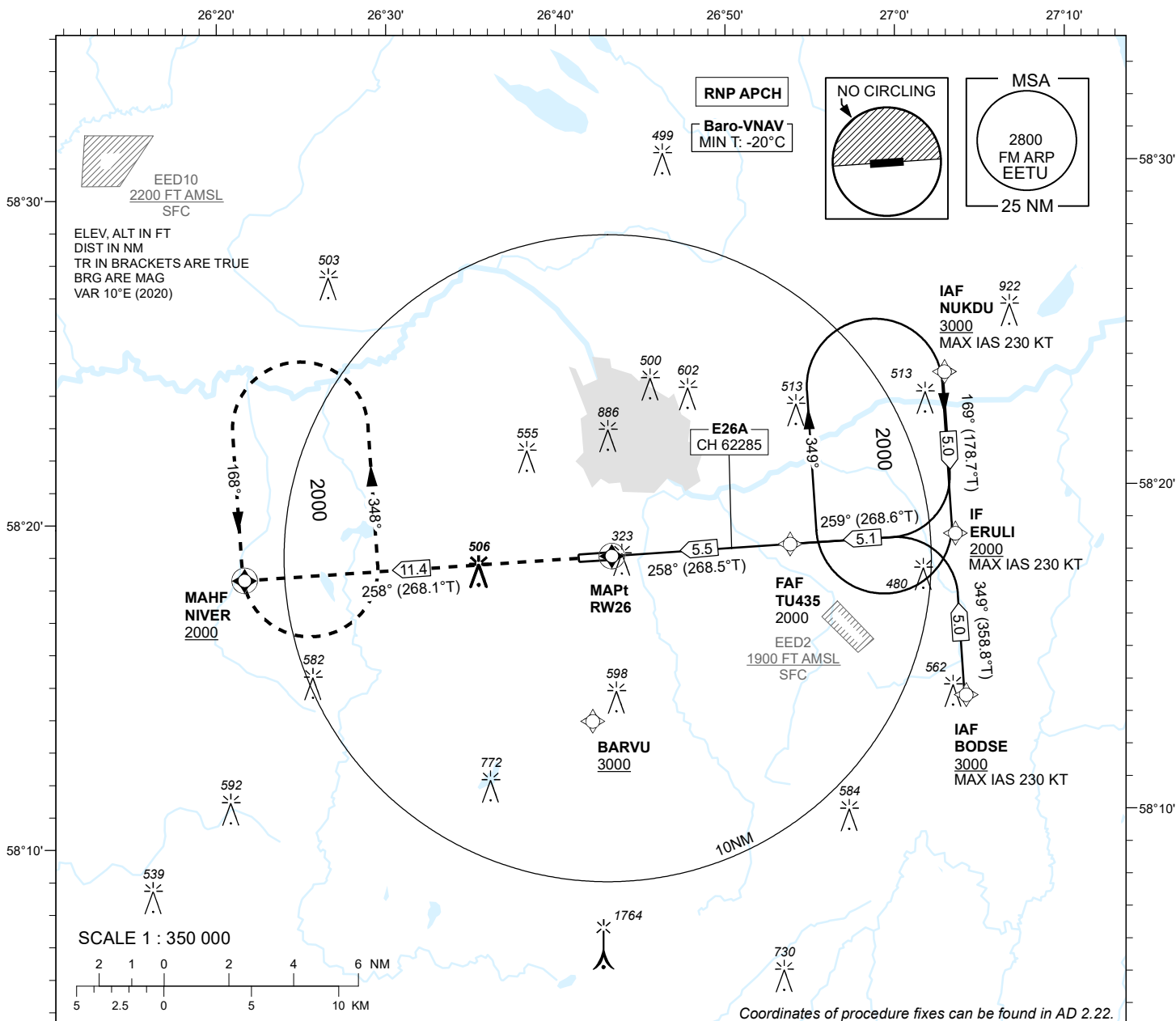
**INSTRUMENT  
APPROACH  
CHART - ICAO**

**SBAS  
CH 62285  
E26A**

**AD ELEV 220 FT  
HEIGHTS RELATED TO  
THR RWY 26 ELEV 193 FT**

INFORMATION 133.905  
ATIS 123.130 / TEL: +372 730 9212

**TARTU (EETU)  
RNP RWY 26  
(CAT A;B;C)**



**MISSED APPROACH:**  
Climb on track 258° to NIVER.  
Enter NIVER holding climbing  
to 2000 FT.

**RADIO FAILURE:**  
Climb to WPT NIVER, turn left  
and climb not below 3000 FT to  
WPT BARVU. Join the RNP  
APCH procedure at IAF BODSE.

**TRANSITION ALT 5000**

CHANGES: Call sign.

OCA (H)	Final Approach DIST			Distance from THR 26				
	A	B	C	5.0 NM	4.0 NM	3.0 NM	2.0 NM	1.0 NM
LPV Cat I	417 (224)	429 (236)	437 (244)	1840	1520	1200	880	570
LNAV/VNAV	430 (240)	440 (250)	450 (260)	1650	1330	1010	690	370
LNAV	540 (350)			KT	90	100	120	140
Circling (S of AD only)	630 (410)	730 (510)	900 (680)	MIN:SEC	3:40	3:18	2:45	2:22
				Rate of descent	FT / MIN	480	535	640