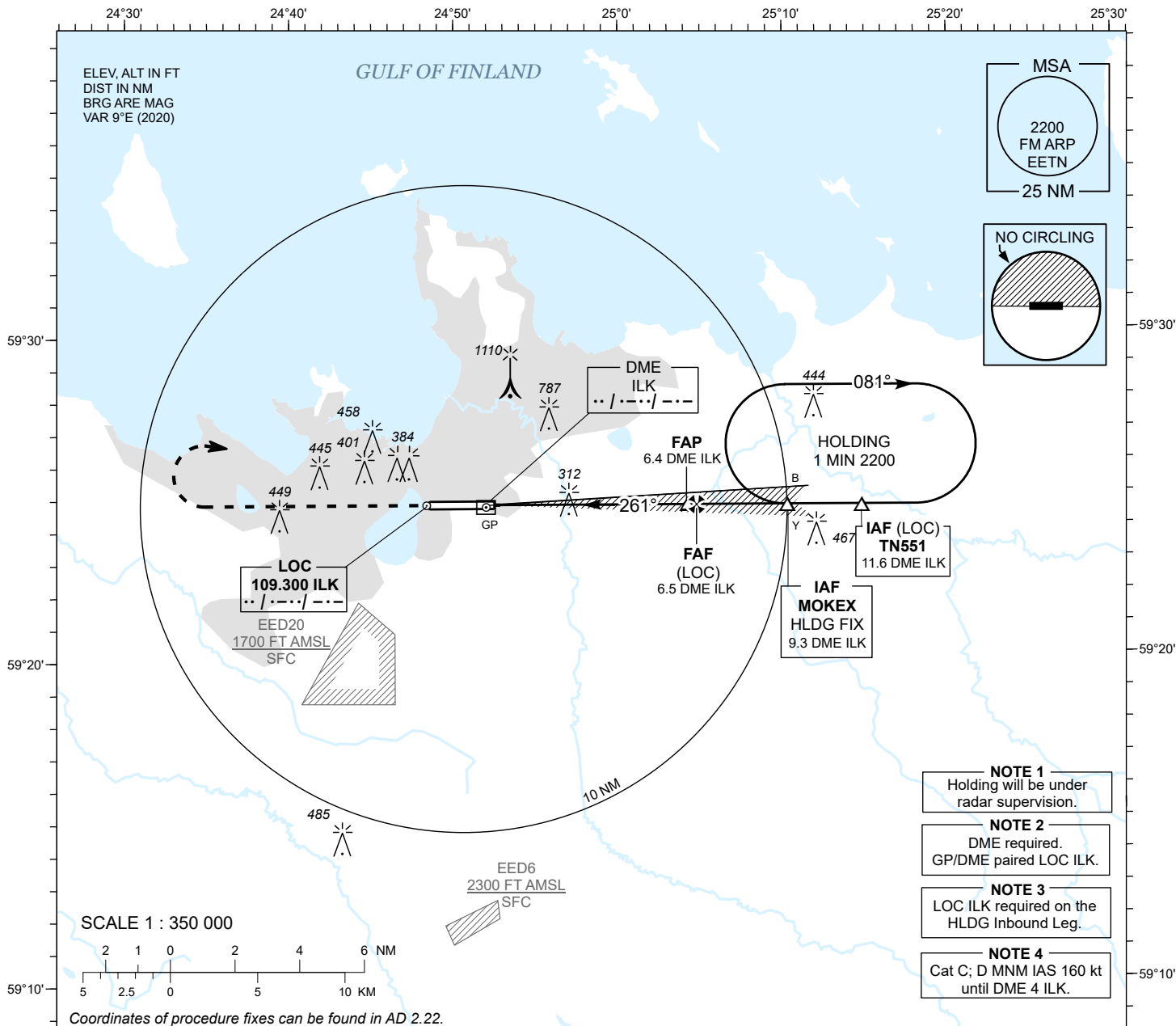


**INSTRUMENT
APPROACH
CHART - ICAO**

AD ELEV **135 FT**
HEIGHTS RELATED TO
THR RWY 26 ELEV **135 FT**

RADAR 127.905
TOWER 135.905
ATIS 124.880 / TEL: +372 625 8210

**LENNART MERI
TALLINN (EETN)
ILS or LOC RWY 26**



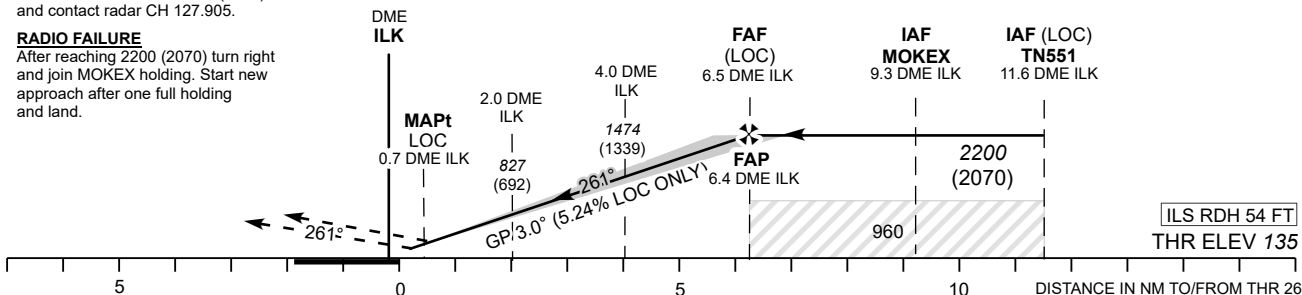
TRANSITION ALT 5000

DME ILK	DME 2	DME 3	DME 4	DME 5	DME 6
ALT	770	1090	1410	1730	2040
HGT	(630)	(950)	(1270)	(1590)	(1900)

Table for LOC ONLY approach

MISSED APPROACH
Climb on track 261° to 2200 (2070) and contact radar CH 127.905.

RADIO FAILURE
After reaching 2200 (2070) turn right and join MOKEX holding. Start new approach after one full holding and land.



OCA (H)		A	B	C	D							
Straight-in Approach	CAT I	308 (173)	320 (185)	328 (193)	338 (203)	Timing not authorized for defining the MAPt.						
	CAT II	200 (65)	218 (83)	246 (111)	260 (125)	GS	KT	90	100	120	140	160
	LOC ONLY	560 (430)				FAF-MAPt 5.8 NM	MIN:SEC	3:52	3:29	2:54	2:29	2:11
	Circling (S of AD only)	1360 (1230)		1510 (1380)		Rate of descent	FT / MIN	475	530	635	740	850

CHANGES: SUP 02/2024 incorporated, MSA centerpoint.