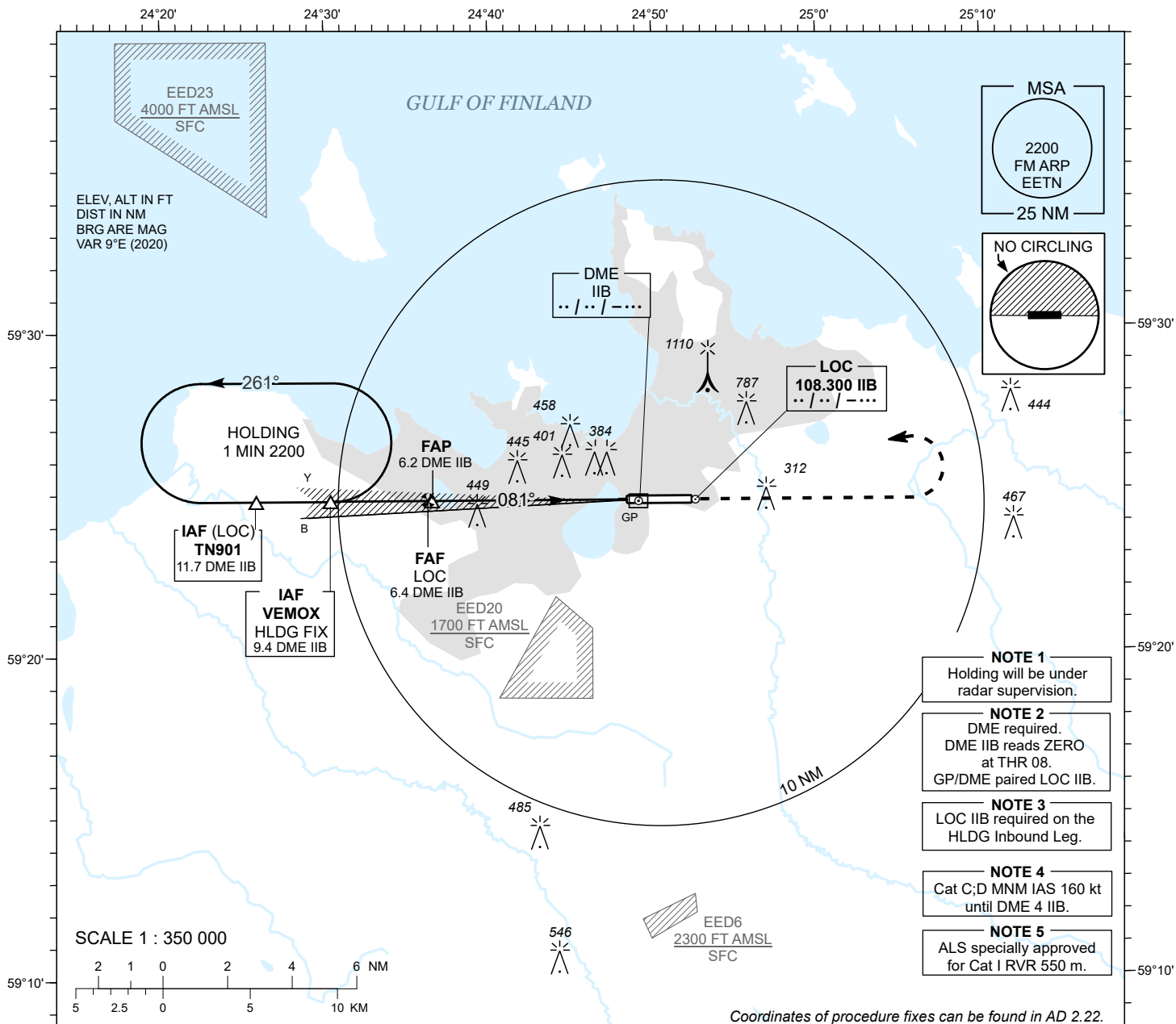


INSTRUMENT APPROACH CHART - ICAO

AD ELEV 135 FT
HEIGHTS RELATED TO
THR RWY 08 ELEV 130 FT

RADAR 127.905
TOWER 135.905
ATIS 124.880 / TEL: +372 625 8210

LENNART MERI TALLINN (EETN) ILS or LOC RWY 08



- NOTE 1**
Holding will be under radar supervision.
- NOTE 2**
DME required.
DME IIB reads ZERO at THR 08.
GP/DME paired LOC IIB.
- NOTE 3**
LOC IIB required on the HLDG Inbound Leg.
- NOTE 4**
Cat C;D MNM IAS 160 kt until DME 4 IIB.
- NOTE 5**
ALS specially approved for Cat I RVR 550 m.

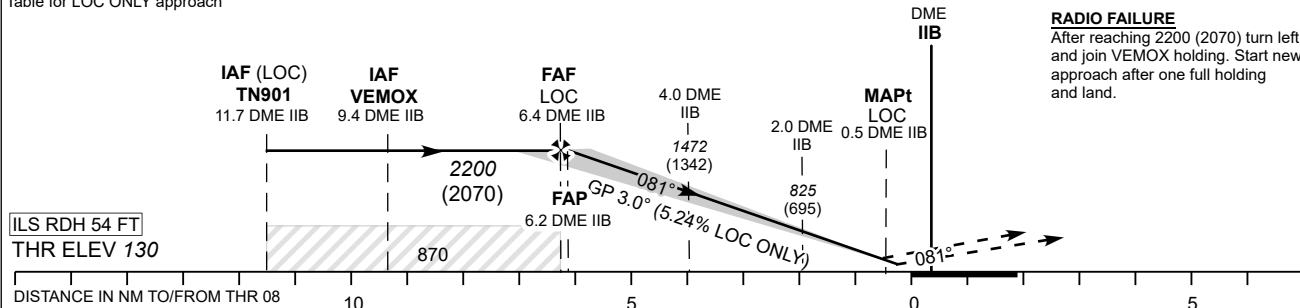
DME IIB	DME 6	DME 5	DME 4	DME 3	DME 2
ALT	2130	1800	1470	1150	820
HGT	(2000)	(1670)	(1340)	(1020)	(690)

Table for LOC ONLY approach

TRANSITION ALT 5000

MISSED APPROACH
Climb on track 081° to 2200 (2070) and contact radar CH 127.905.

RADIO FAILURE
After reaching 2200 (2070) turn left and join VEMOX holding. Start new approach after one full holding and land.



OCA (H)		A	B	C	D							
Straight-in Approach	CAT I	300 (170)	312 (182)	321 (191)	331 (201)	Timing not authorized for defining the MAPt.						
	CAT II	236 (106)	253 (123)	265 (135)	280 (150)	GS	KT	90	100	120	140	160
	LOC ONLY	540 (410)				FAF-MAPt 5.9 NM	MIN:SEC	3:56	3:32	2:57	2:32	2:13
Circling (S of AD only)		1360 (1230)		1510 (1380)		Rate of descent	FT / MIN	475	530	635	740	850

CHANGES: SUP 02/2024 incorporated, MSA centerpoint.