

**INSTRUMENT
APPROACH
CHART - ICAO**

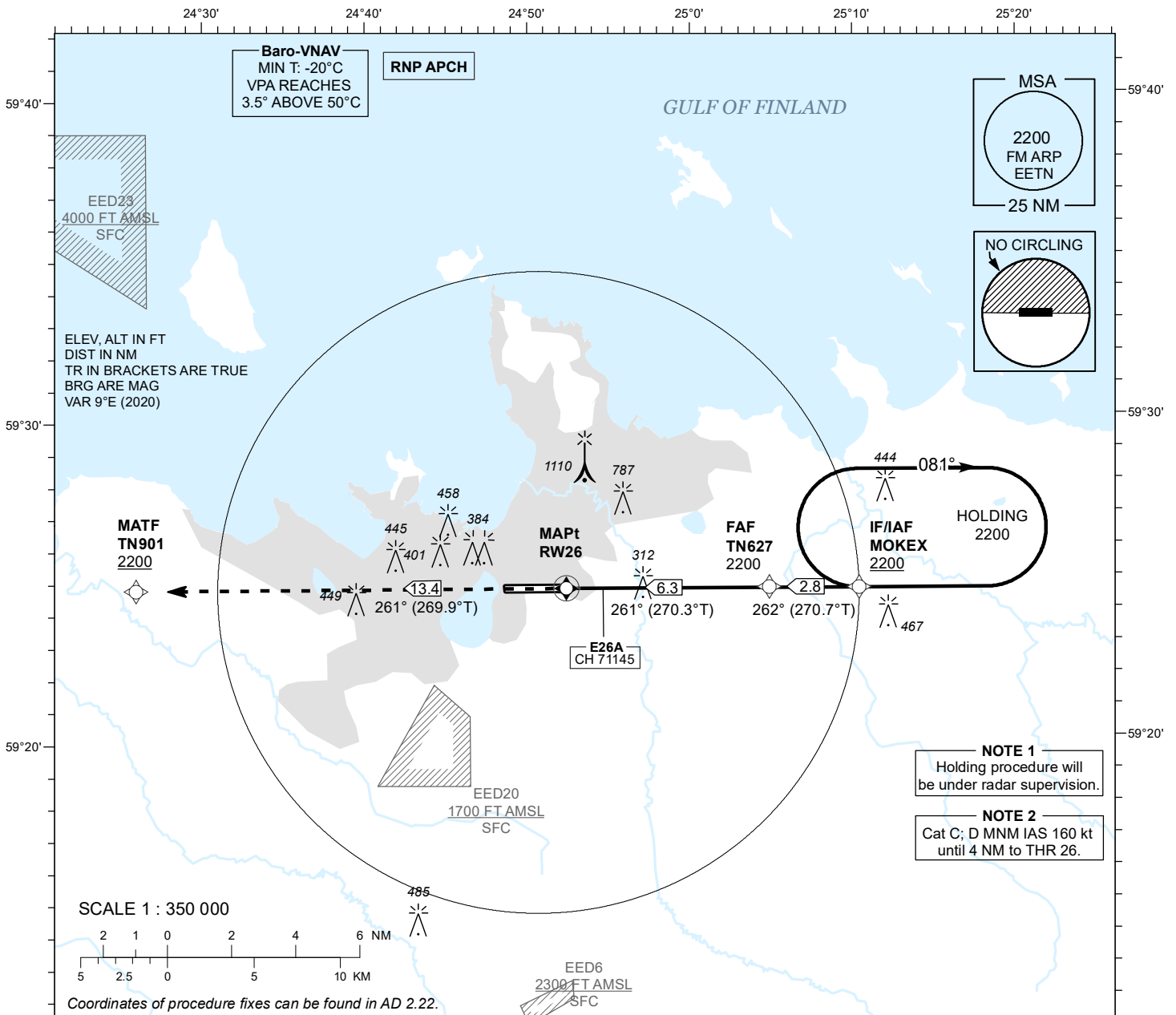
**SBAS
CH 71145
E26A**

**AD ELEV 135 FT
HEIGHTS RELATED TO
THR RWY 26 ELEV 135 FT**

RADAR 127.905
TOWER 135.905
ATIS 124.880 / TEL: +372 625 8210

**LENNART MERI
TALLINN (EETN)**

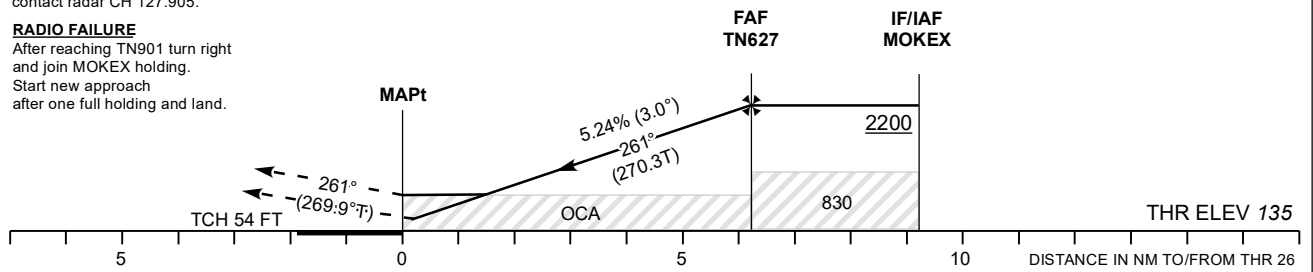
RNP Z RWY 26



TRANSITION ALT 5000

MISSED APPROACH
Climb to TN901 to 2200 and contact radar CH 127.905.

RADIO FAILURE
After reaching TN901 turn right and join MOKEX holding. Start new approach after one full holding and land.



OCA (H)	A	B	C	D	Final Approach DIST						
					2.0 NM	3.0 NM	4.0 NM	5.0 NM	6.0 NM		
LPV Cat I	338 (203)	350 (215)	358 (223)	368 (233)	ELEV	820	1140	1460	1780	2100	
LNAV/VNAV	350 (220)	360 (230)	450 (320)	460 (330)	HGT	680	1000	1320	1640	1960	
LNAV	560 (430)				FAF-MAPt 6.3 NM	MIN:SEC	4:13	3:48	3:10	2:43	2:23
Circling (S of AD only)	1360 (1230)		1510 (1380)		Rate of descent	FT / MIN	475	530	635	740	850