

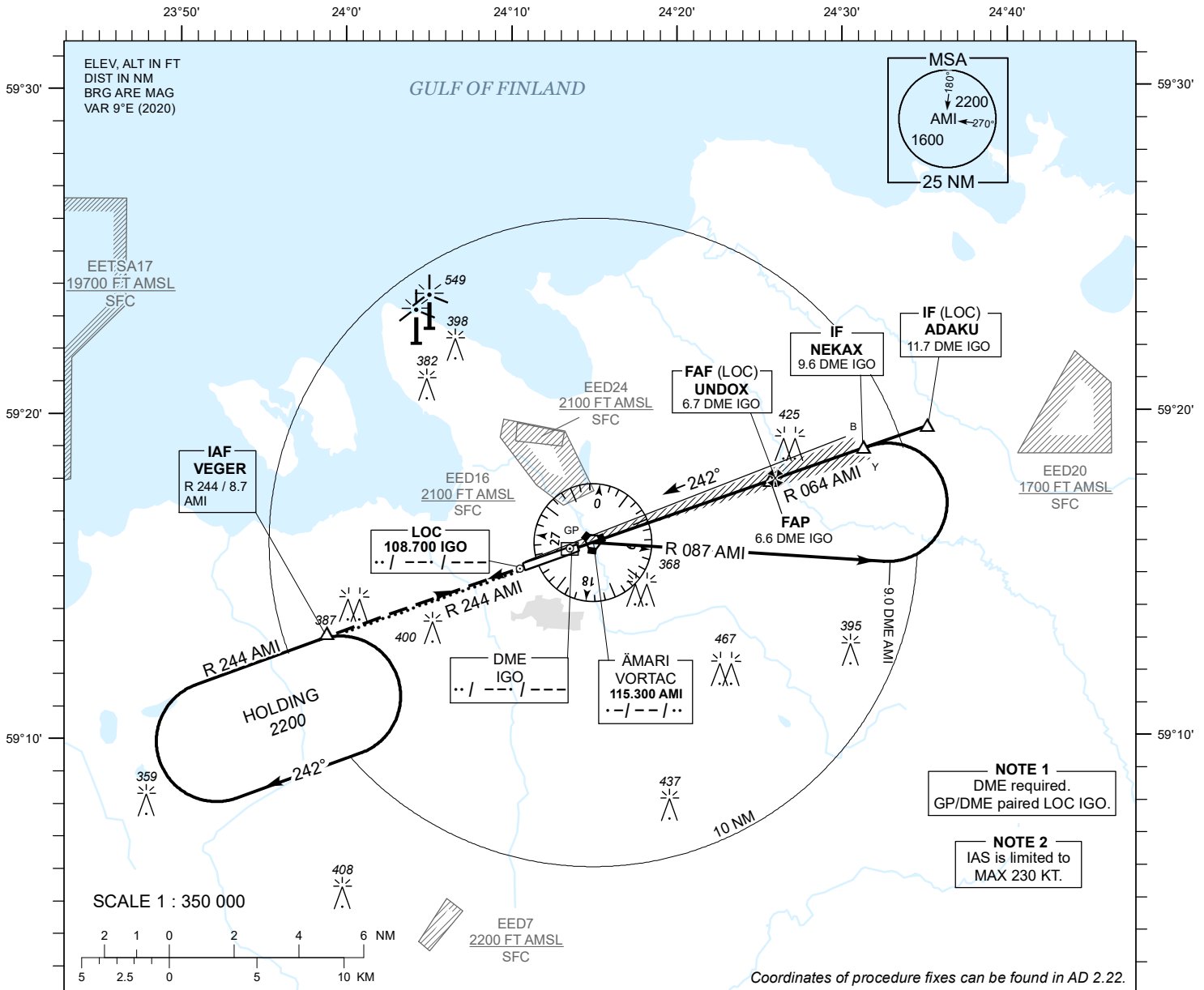
**INSTRUMENT
APPROACH
CHART - ICAO**

AD ELEV **68 FT**
HEIGHTS RELATED TO
THR RWY 24 ELEV **60 FT**

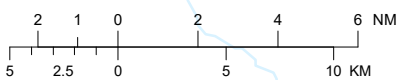
TALLINN RADAR 127.905
ÄMARI TOWER 122.100 / 257.800

**ÄMARI (EEEE)
MILITARY AERODROME**

ILS or LOC RWY 24
(CAT C;D;E)



SCALE 1 : 350 000



Coordinates of procedure fixes can be found in AD 2.22.

MISSED APPROACH

Climb on track 242 to 2200 and expect radar vectors. Contact TALLINN RADAR CH 127.905.

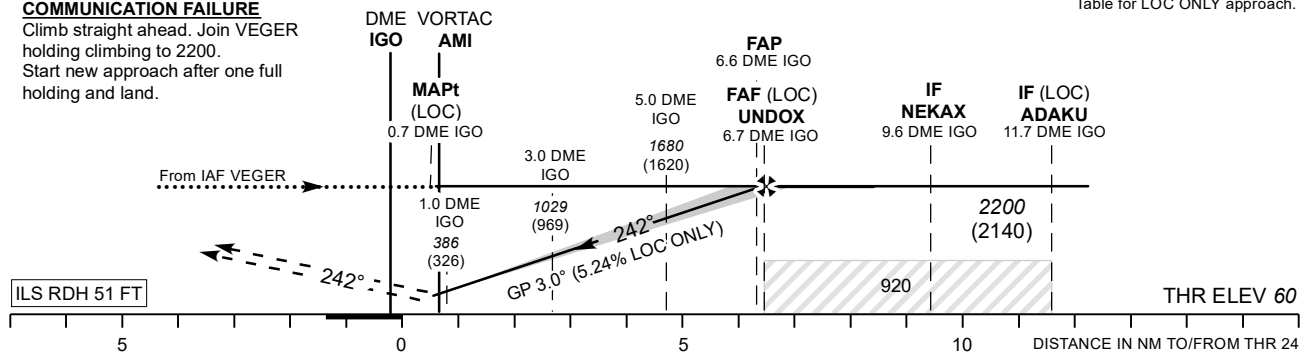
COMMUNICATION FAILURE

Climb straight ahead. Join VEGER holding climbing to 2200. Start new approach after one full holding and land.

TRANSITION ALT 5000

DME IGO	1 NM	2 NM	3 NM	4 NM	5 NM	6 NM
ALT	390	700	1020	1340	1660	1980
HGT	(330)	(650)	(960)	(1280)	(1600)	(1920)

Table for LOC ONLY approach.



NO OFZ RWY 24

Timing not authorized for defining the MAPt.

Straight-in Approach	OCA (H)			LOC ONLY	KT	100	120	140	160	180	200	220	
	CAT I	C	D										E
Approach	CAT I	318 (258)	328 (268)	347 (287)	FAF- MAPt 6.0 NM	MIN : SEC	3:36	3:00	2:34	2:15	2:00	1:48	1:38
	LOC ONLY	380 (320)				Rate of descent	FT / MIN	535	640	745	850	960	1065
Circling	800 (730)			970 (900)									

CHANGES: MAG VAR and correction of radials.