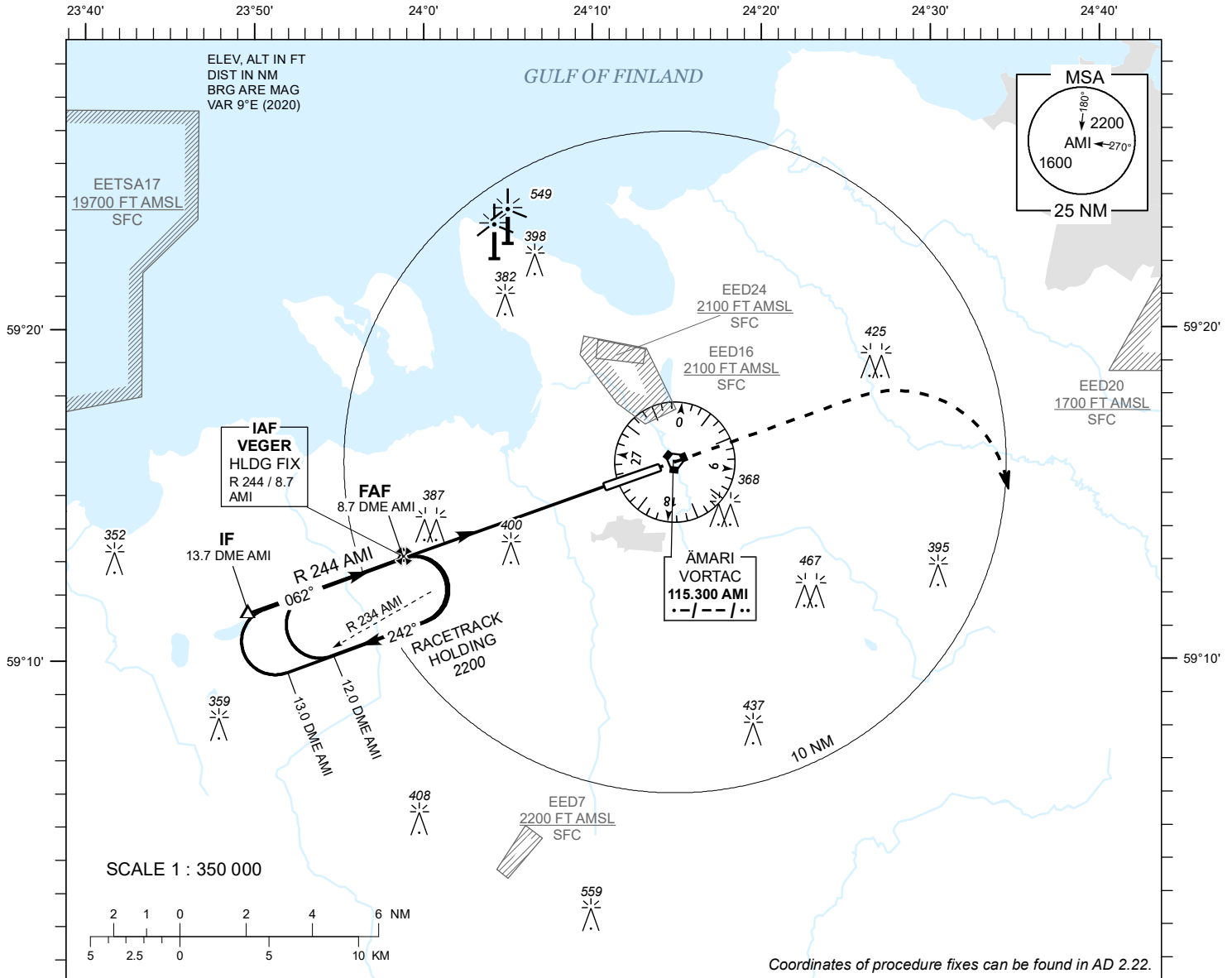


**INSTRUMENT
APPROACH
CHART - ICAO**

AD ELEV **68 FT**
HEIGHTS RELATED TO
THR RWY 06 ELEV **65 FT**

TALLINN RADAR 127.905
ÄMARI TOWER 122.100 / 257.800

**ÄMARI (EEEE)
MILITARY AERODROME
VORTAC RWY 06
(CAT A;B)**



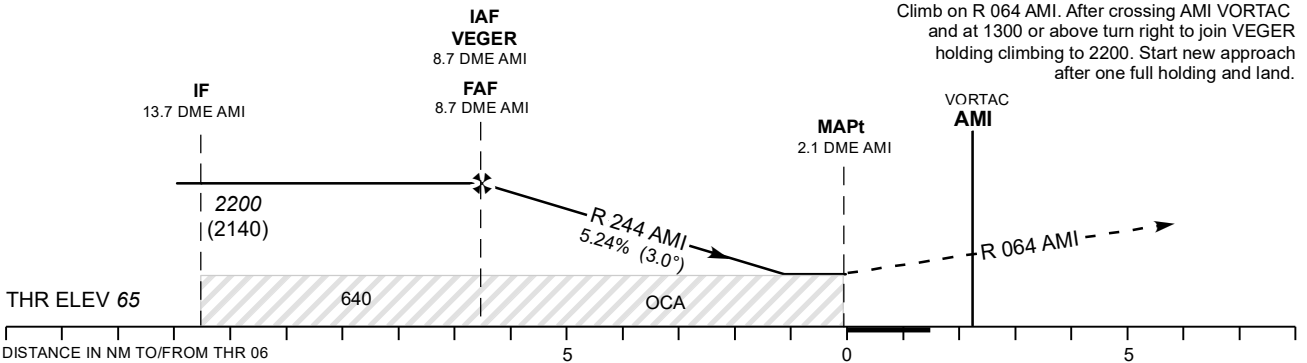
TACAN AMI	8 NM	7 NM	6 NM	5 NM	4 NM
ALT	1980	1670	1350	1030	720
HGT	(1920)	(1610)	(1290)	(970)	(660)

TRANSITION ALT 5000

MISSED APPROACH
Climb on R 064 AMI. After crossing AMI VORTAC and at 1300 or above turn right heading 160 climbing to 2200. Contact TALLINN RADAR CH 127.905.

COMMUNICATION FAILURE
Climb on R 064 AMI. After crossing AMI VORTAC and at 1300 or above turn right to join VEGER holding climbing to 2200. Start new approach after one full holding and land.

CHANGES: MAG VAR and correction of radials.



OCA (H)	A	B	KT	80	90	100	120	140	
Straight - in Approach	640 (580)		MIN : SEC	4:57	4:24	3:58	3:18	2:50	
Circling	500 (430)	660 (590)	Rate of descent	FT / MIN	425	480	535	640	745