

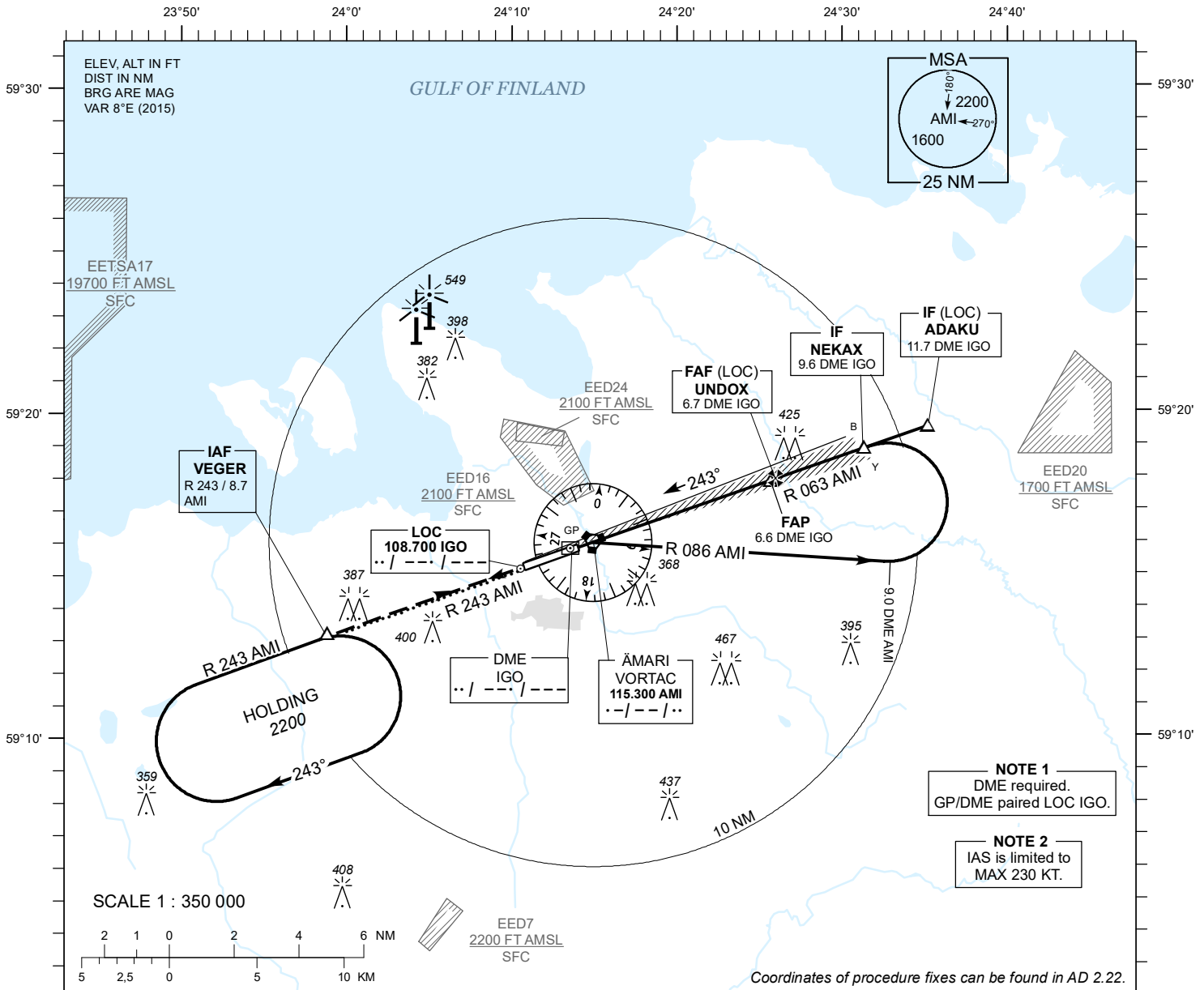
**INSTRUMENT  
APPROACH  
CHART - ICAO**

AD ELEV 68 FT  
HEIGHTS RELATED TO  
THR RWY 24 ELEV 60 FT

TALLINN RADAR 127.905  
ÄMARI TOWER 122.100 / 257.800

**ÄMARI (EEEE)  
MILITARY AERODROME**

ILS or LOC RWY 24  
(CAT C;D;E)



**MISSED APPROACH**

Climb on track 243 to 2200 and expect radar vectors. Contact TALLINN RADAR CH 127.905.

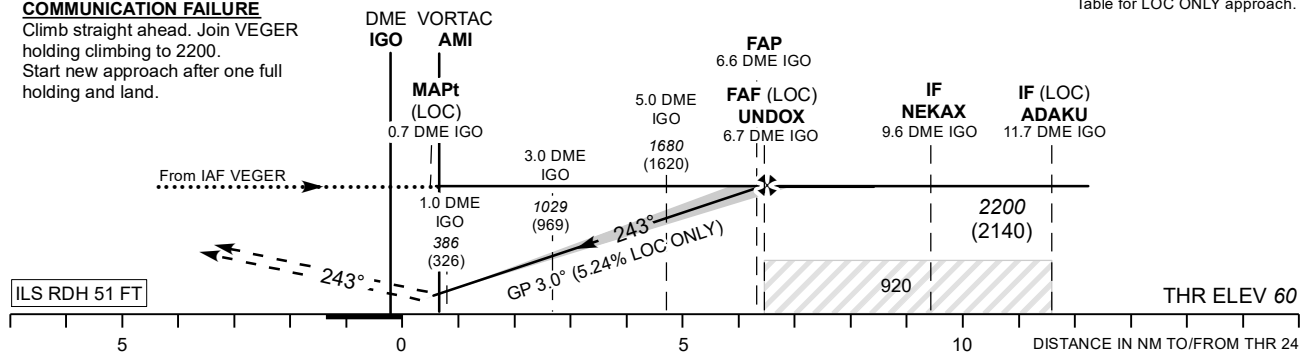
**COMMUNICATION FAILURE**

Climb straight ahead. Join VEGER holding climbing to 2200. Start new approach after one full holding and land.

TRANSITION ALT 5000

DME IGO	1 NM	2 NM	3 NM	4 NM	5 NM	6 NM
ALT	390	700	1020	1340	1660	1980
HGT	(330)	(650)	(960)	(1280)	(1600)	(1920)

Table for LOC ONLY approach.



CHANGES: VORTAC FREQ.

NO OFZ RWY 24

Timing not authorized for defining the MAPt.

Straight-in Approach	OCA (H)	C	D	E	LOC ONLY	KT	100	120	140	160	180	200	220
					FAF- MAPt 6.0 NM	MIN : SEC	3:36	3:00	2:34	2:15	2:00	1:48	1:38
Circling	800 (730)		970 (900)		Rate of descent	FT / MIN	535	640	745	850	960	1065	1170