

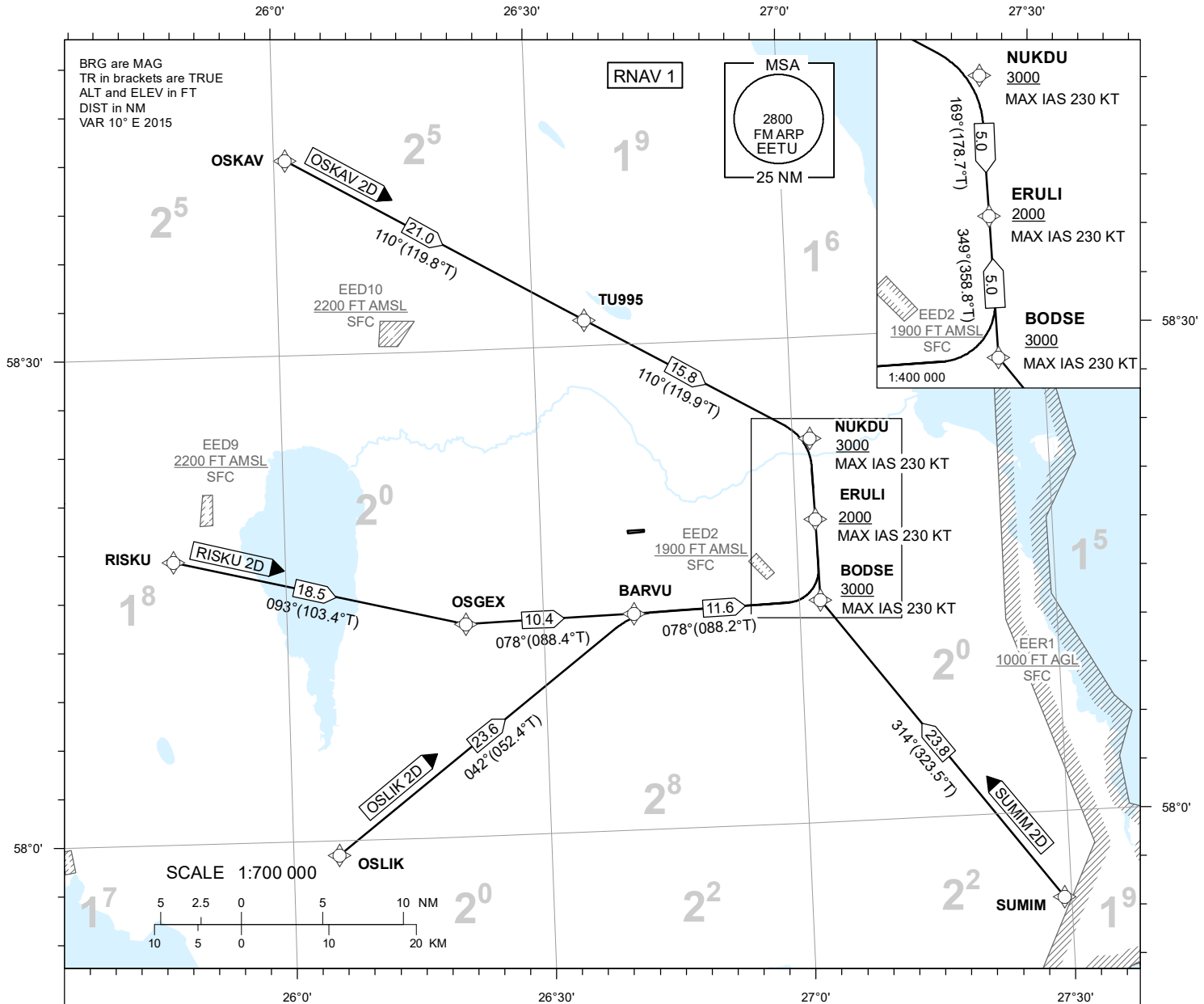
**STANDARD ARRIVAL CHART
INSTRUMENT (STAR) - ICAO**

TRANSITION ALTITUDE
5000

TWR 133.905
ATIS 123.130 / TEL: +372 730 9212

TARTU (EETU)
RNAV (GNSS) STAR
RWY 26

OSKAV 2D OSLIK 2D
RISKU 2D SUMIM 2D



NAV SPECIFICATION

RNAV 1 CAPABILITY REQUIRED. OTHERWISE INFORM ATC.

DME/DME OPS

NOT SUPPORTED.

DESCENT

DESCENT CLEARANCES WILL BE GIVEN SEPARATELY BY ATC. IF TRAFFIC PERMITS, PLAN CONTINUOUS DESCENT ARRIVAL (CDA) ACCORDING TO STAR.

WPT CONSTRAINTS

ALT/FL/ SPEED CONSTRAINTS MUST ALWAYS BE FOLLOWED AS PUBLISHED UNLESS CNL BY ATC.

ROUTES

CODING TABLES AND WPT LIST: REF AD 2.22.

RADIO COMMUNICATION FAILURE

IN CASE OF RADIO COMMUNICATION FAILURE SEE AD 2.22.

CONTINGENCY PROCEDURE

LOSS OF RNAV CAPABILITY INFORM ATC TO GET ALTERNATIVE CLEARANCE.

TEMPERATURE CORRECTION

TEMPERATURE CORRECTION IS ADDED TO MSA BY ATC IF GND TEMPERATURE FALLS BELOW -0°C.

CHANGES: NAV specification name, PBN box added.