

**STANDARD DEPARTURE CHART
INSTRUMENT (SID) - ICAO**

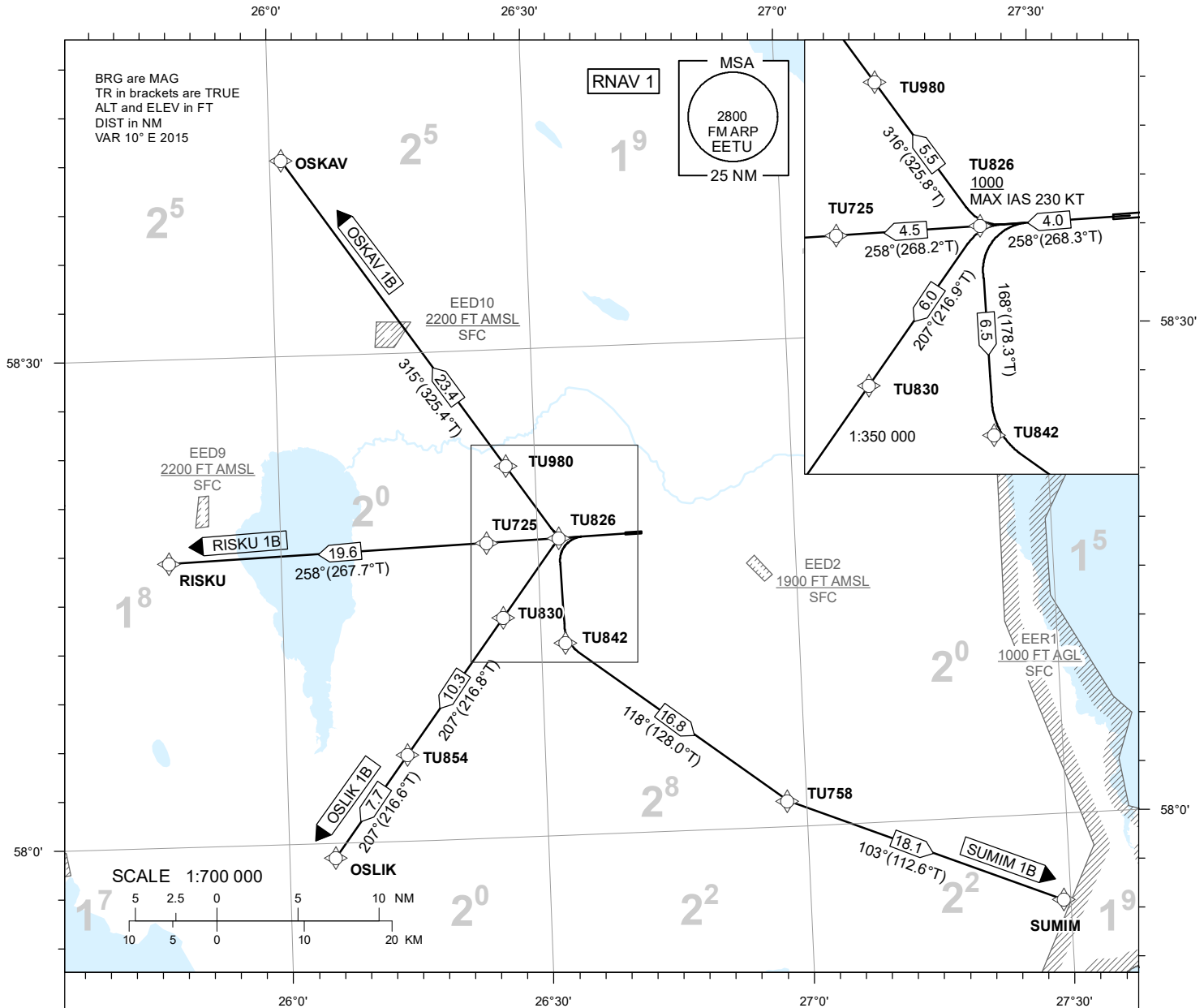
TRANSITION ALTITUDE
5000

TWR 133.905
ATIS 123.130 / TEL: +372 730 9212

TARTU (EETU)

**RNAV (GNSS) SID
RWY 26**

OSKAV 1B OSLIK 1B
RISKU 1B SUMIM 1B



NAV SPECIFICATION

RNAV 1 CAPABILITY REQUIRED. OTHERWISE INFORM ATC.

DME/DME OPS

NOT SUPPORTED.

EN-ROUTE CLEARANCE

CONTACT TARTU TWR ON CH 133.905 NOT EARLIER THAN 10 MINUTES PRIOR TO EOBT OR ESTIMATED ENGINE START-UP, ADVISE CALL SIGN AND IF NOT ABLE TO FOLLOW RNAV SID.

ADDITIONS TO SID

INSTRUCTIONS CONTAINING DEVIATION FROM SID MAY BE INCLUDED IN THE ATC CLEARANCE PRIOR TO TAKE OFF.

ROUTES

CODING TABLES AND WPT LIST: REF AD 2.22.

INITIAL CLIMB

CLIMB TO ASSIGNED ALTITUDE CLEARED BY ATC.

CONTINGENCY PROCEDURE

LOSS OF RNAV CAPABILITY INFORM ATC TO GET ALTERNATIVE CLEARANCE.

MINIMUM CLIMB GRADIENTS

DUE TO AIRSPACE RESTRICTIONS:

OSKAV 1B 4,6% (280 FT/NM)

OSLIK 1B, RISKU 1B 5,5% (340 FT/NM)

SUMIM 1B 4,1% (250 FT/NM) UP TO TU826, AFTER THAT 3,4% (210 FT/MIN)

AIRCRAFT UNABLE TO COMPLY SHALL INFORM ATC.

CHANGES: NAV specification name, PBN box added.