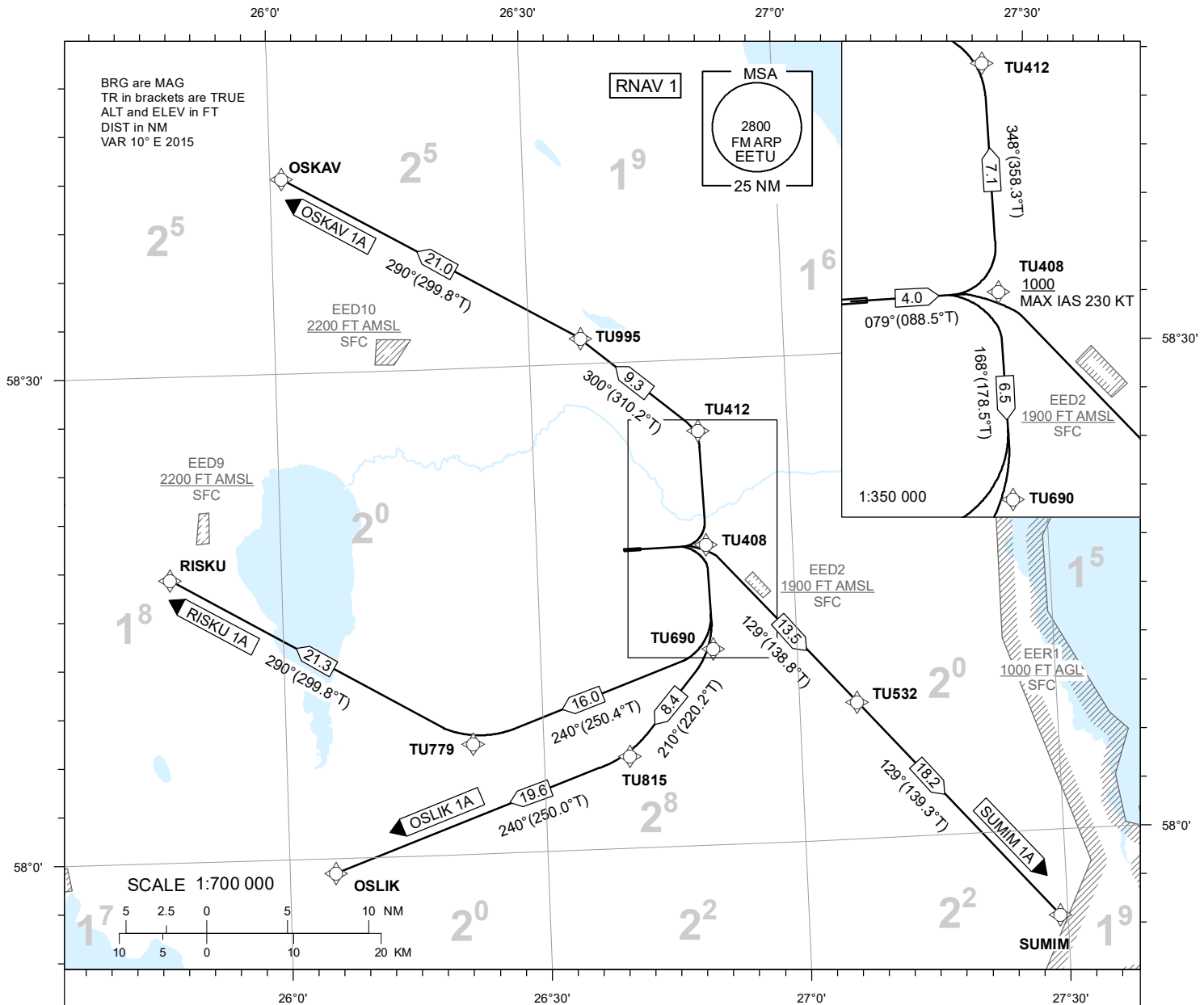


**STANDARD DEPARTURE CHART  
INSTRUMENT (SID) - ICAO**

TRANSITION ALTITUDE 5000  
TWR 133.905  
ATIS 123.130 / TEL: +372 730 9212

**TARTU (EETU)**  
RNAV (GNSS) SID  
RWY 08

OSKAV 1A OSLIK 1A  
RISKU 1A SUMIM 1A



**NAV SPECIFICATION**  
RNAV 1 CAPABILITY REQUIRED. OTHERWISE INFORM ATC.  
**DME/DME OPS**  
NOT SUPPORTED.  
**EN-ROUTE CLEARANCE**  
CONTACT TARTU TWR ON CH 133.905 NOT EARLIER THAN 10 MINUTES PRIOR TO EOBT OR ESTIMATED ENGINE START-UP, ADVISE CALL SIGN AND IF NOT ABLE TO FOLLOW RNAV SID.  
**ADDITIONS TO SID**  
INSTRUCTIONS CONTAINING DEVIATION FROM SID MAY BE INCLUDED IN THE ATC CLEARANCE PRIOR TO TAKE OFF.  
**ROUTES**  
CODING TABLES AND WPT LIST: REF AD 2.22.  
**INITIAL CLIMB**  
CLIMB TO ASSIGNED ALTITUDE CLEARED BY ATC.  
**CONTINGENCY PROCEDURE**  
LOSS OF RNAV CAPABILITY INFORM ATC TO GET ALTERNATIVE CLEARANCE.

**MINIMUM CLIMB GRADIENTS  
DUE TO AIRSPACE RESTRICTIONS:**  
  
OSKAV 1A 4,1% (250 FT/NM) UP TO TU408,  
AFTER THAT 3,7% (230 FT/NM)  
  
OSLIK 1A 4,1% (250 FT/NM)  
  
RISKU 1A 4,1% (250 FT/NM) UP TO TU408  
  
SUMIM 1A 4,3% (260 FT/NM)  
  
AIRCRAFT UNABLE TO COMPLY SHALL  
INFORM ATC.

CHANGES: NAV specification name, PBN box added.