

STANDARD DEPARTURE CHART INSTRUMENT (SID) - ICAO

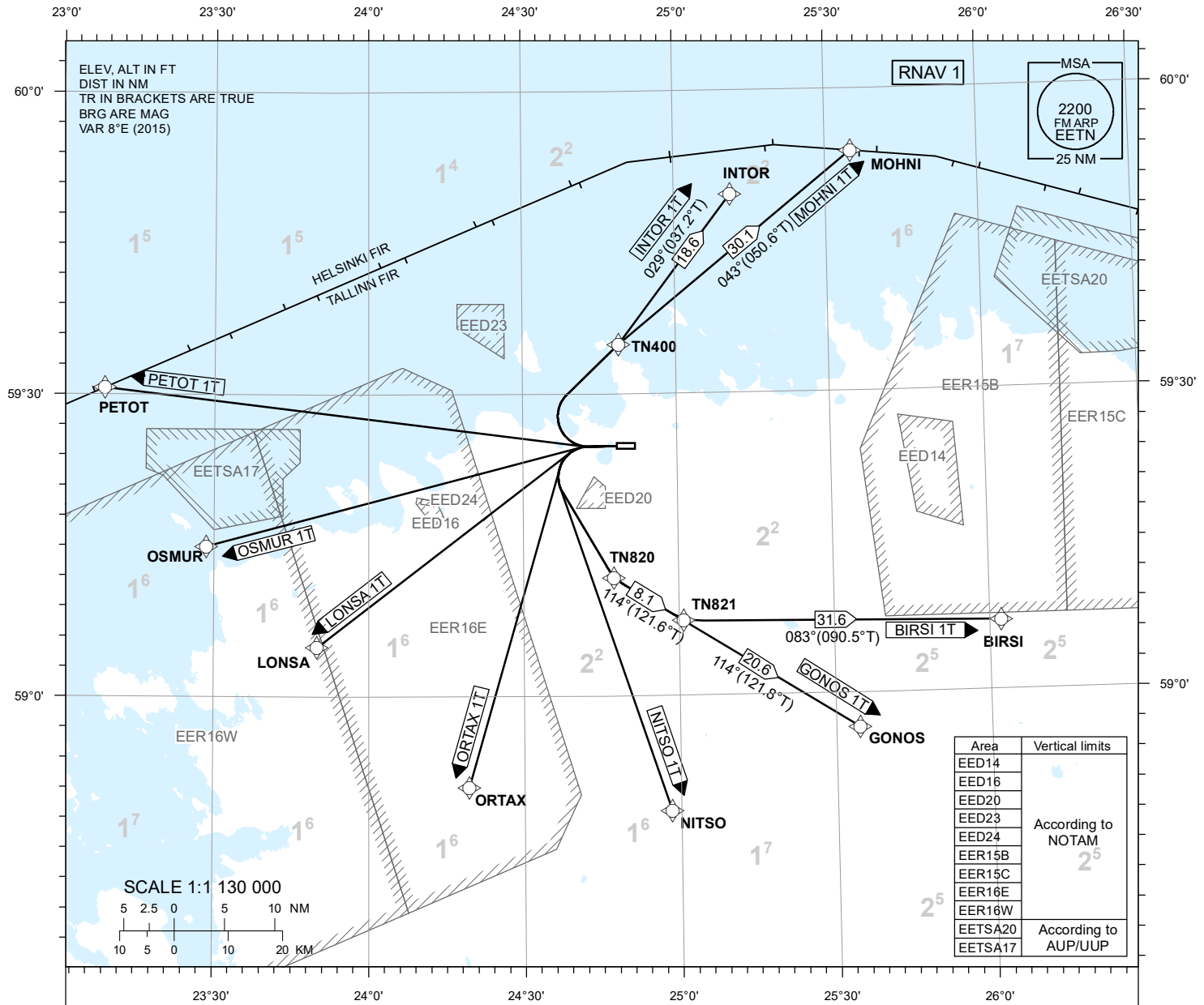
TRANSITION ALTITUDE
5000

TOWER 135.905
RADAR 127.905
ATIS 124.880 / TEL: +372 625 8210

LENNART MERI TALLINN (EETN)

RNAV (GNSS) SID
RWY 26

BIRSI 1T GONOS 1T INTOR 1T LONSA 1T MOHNI 1T
NITSO 1T ORTAX 1T OSMUR 1T PETOT 1T



NAV SPECIFICATION

RNAV 1 CAPABILITY REQUIRED. OTHERWISE INFORM ATC.

EN-ROUTE CLEARANCE

CONTACT TALLINN TWR ON CH 135.905 NOT EARLIER THAN 10 MINUTES PRIOR TO EOBT OR ESTIMATED ENGINE START-UP, ADVISE CALL SIGN, STAND/GATE NUMBER AND IF NOT ABLE TO FOLLOW RNAV SID.

PROC DESCRIPTION AND RNAV-UNABLE INSTRUCTION: REF AD 2.22.

SQUAWK

SQUAWK THE ASSIGNED SSR-CODE IMMEDIATELY PRIOR PUSH-BACK OR TAXI.

INITIAL CLIMB

CLIMB TO 4000 FT MSL OR ASSIGNED ALTITUDE IF LOWER. CLIMB TO A HIGHER LEVEL ONLY WHEN CLEARED BY ATC. MNM CLIMB GRADIENT 6,6% (400 FT/NM) UP TO 4000 FT MSL. AIRCRAFT UNABLE TO COMPLY SHALL INFORM ATC.

RADIO CONTACT

AFTER TAKE-OFF CONTACT TALLINN RADAR 127.905.

LINE-UP / INTERSECTION TAKE-OFF

INFORM TALLINN TWR AS SOON AS POSSIBLE WHEN TAKE-OFF FROM TWY F INTERSECTION IS NOT POSSIBLE AND FULL RUNWAY LENGTH IS REQUIRED.

CHANGES: NAV specification name, PBN box added.