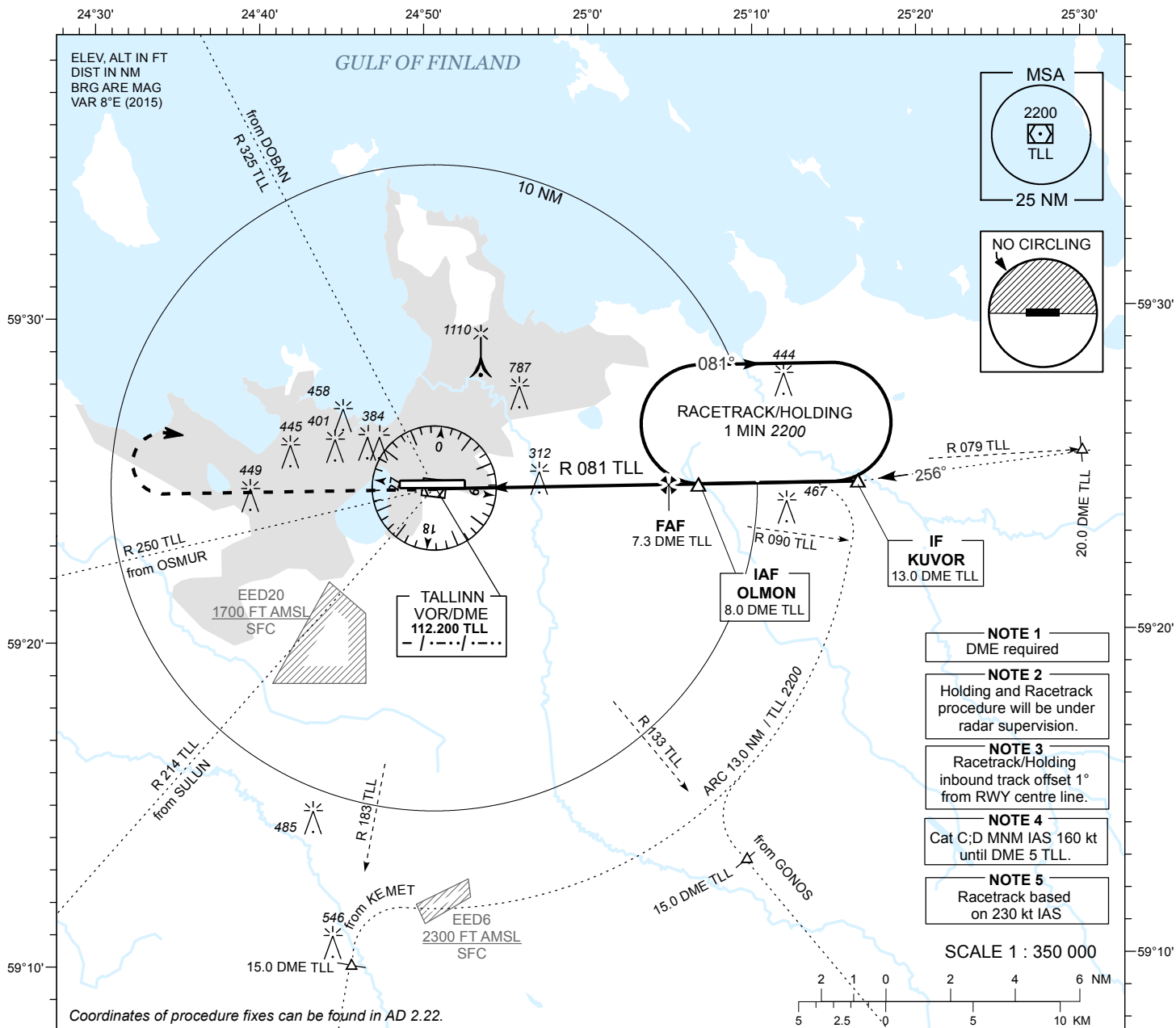


**INSTRUMENT
APPROACH
CHART - ICAO**

AD ELEV 135 FT
HEIGHTS RELATED TO
THR RWY 26 ELEV 135 FT

RADAR 127.905
TOWER 135.905
ATIS 124.880 / TEL: +372 625 8210

**LENNART MERI
TALLINN (EETN)
VOR RWY 26**



MISSED APPROACH

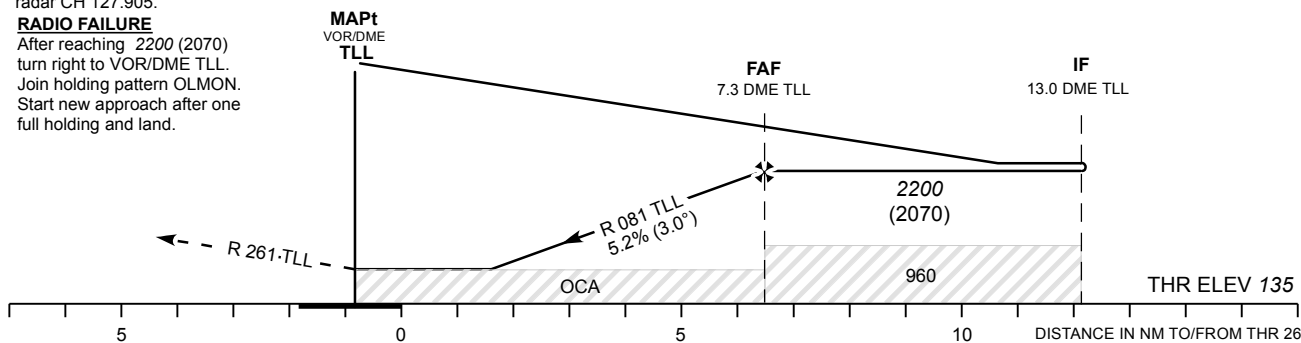
Climb on R 261 TLL to 2200 (2070) and contact radar CH 127.905.

RADIO FAILURE

After reaching 2200 (2070) turn right to VOR/DME TLL. Join holding pattern OLMON. Start new approach after one full holding and land.

TRANSITION ALT 5000

DME TLL	DME 3	DME 4	DME 5	DME 6	DME 7
ALT	850	1160	1480	1790	2110
HGT	(710)	(1020)	(1340)	(1650)	(1970)



Timing not authorized for defining the MAPt.

CHANGES: Note 5.

OCA (H)	A	B	C	D	KT	90	100	120	140	160	
Straight-in Approach	560 (430)				FAF-MAPt 7.3 NM	MIN:SEC	4:52	4:23	3:39	3:08	2:44
Circling (S of AD only)	1360 (1230)	1510 (1380)			Rate of descent	FT / MIN	475	530	635	740	845