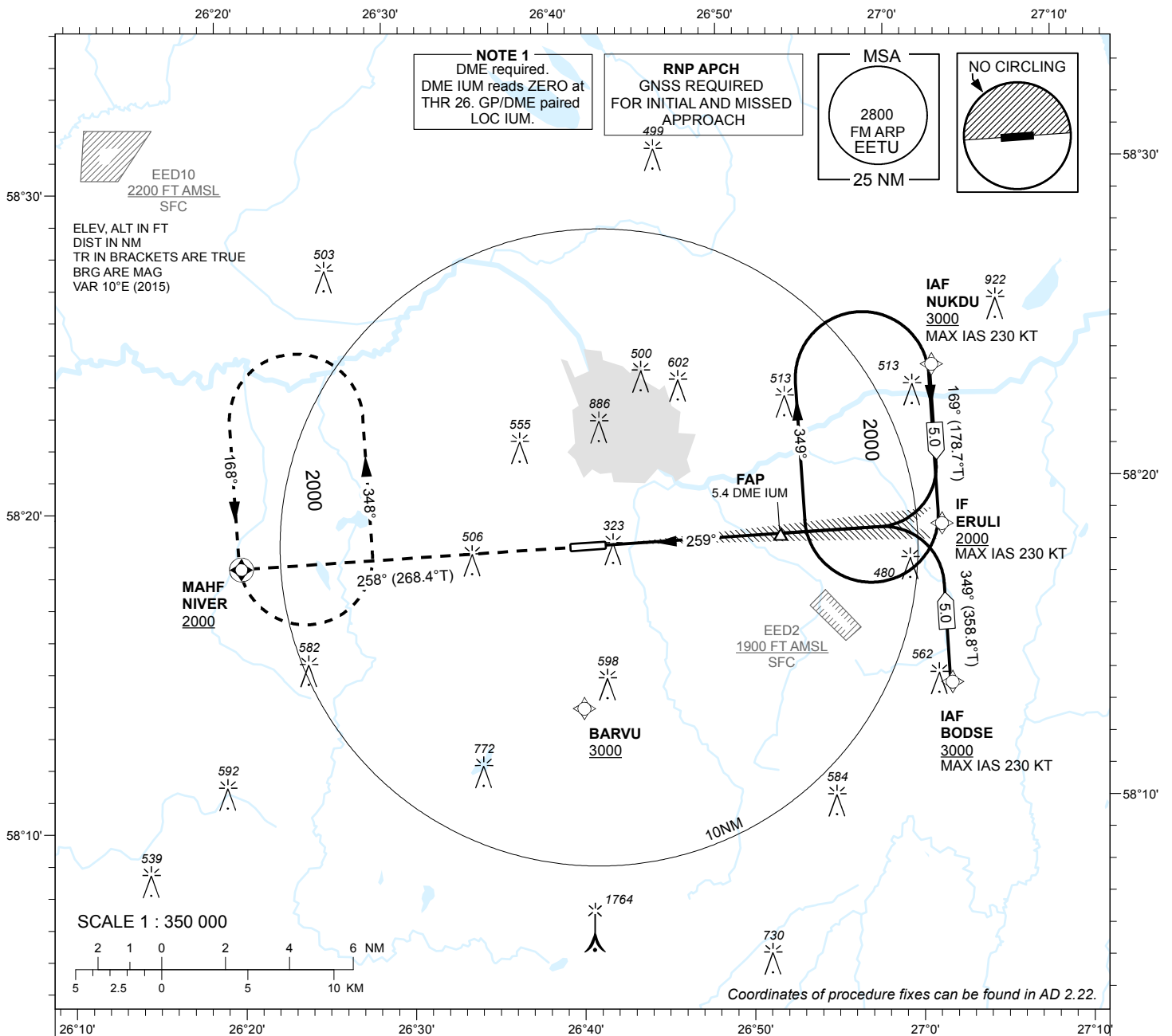


INSTRUMENT APPROACH CHART - ICAO

AD ELEV 220 FT
 HEIGHTS RELATED TO
 THR RWY 26 ELEV 193 FT

TWR 133.905
 ATIS 123.130 / TEL: +372 730 9212

TARTU (EETU)
ILS Z RWY 26
 (Cat A;B;C)



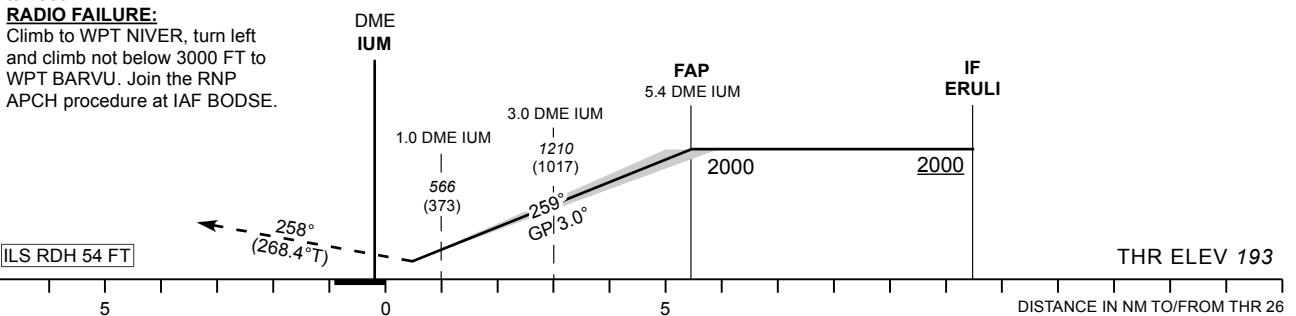
MISSED APPROACH:

Climb on track 258° to NIVER. Enter NIVER holding climbing to 2000 FT.

RADIO FAILURE:

Climb to WPT NIVER, turn left and climb not below 3000 FT to WPT BARVU. Join the RNP APCH procedure at IAF BODSE.

TRANSITION ALT 5000



NO OFZ RWY 26

OCA (H)	A	B	C		KT	90	100	120	140	160
Straight - in Approach	417 (224)	429 (236)	437 (244)	FAP-THR 5.4 NM	MIN:SEC	3:37	3:15	2:43	2:20	2:02
Circling (S of AD only)	630 (410)	730 (510)	900 (680)	Rate of descent	FT / MIN	480	535	640	745	850

CHANGES: TWR CH, circling layout.