

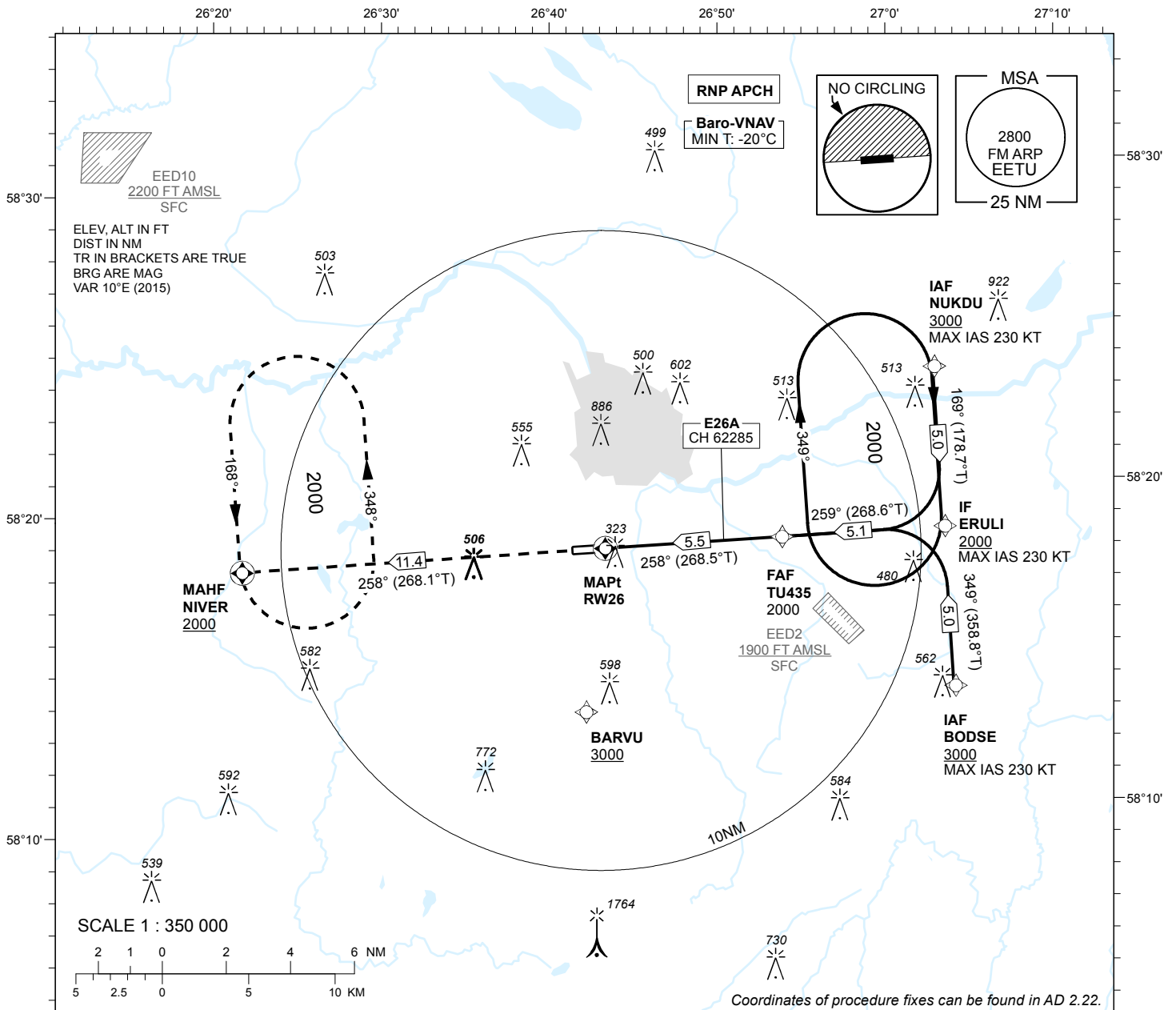
**INSTRUMENT
APPROACH
CHART - ICAO**

**SBAS
CH 62285
E26A**

**AD ELEV 220 FT
HEIGHTS RELATED TO
THR RWY 26 ELEV 193 FT**

TWR 133.905
ATIS 123.130 / TEL: +372 730 9212

**TARTU (EETU)
RNP RWY 26
(Cat A;B;C)**



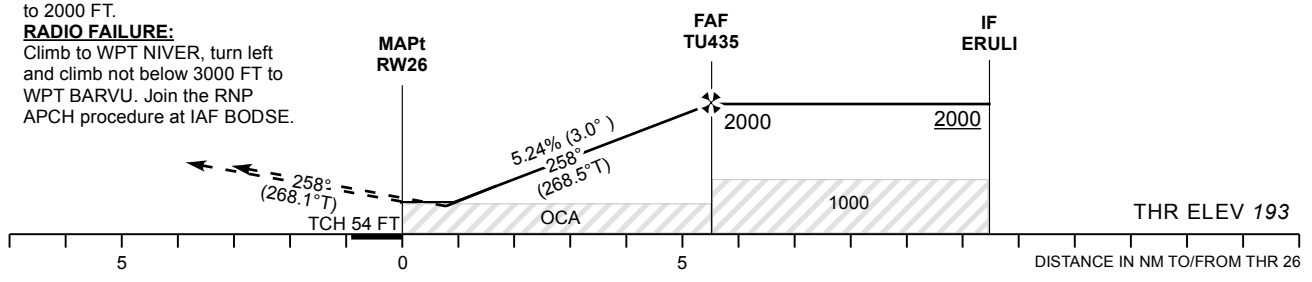
MISSED APPROACH:

Climb on track 258° to NIVER.
Enter NIVER holding climbing
to 2000 FT.

RADIO FAILURE:

Climb to WPT NIVER, turn left
and climb not below 3000 FT to
WPT BARVU. Join the RNP
APCH procedure at IAF BODSE.

TRANSITION ALT 5000



OCA (H)	Final Approach DIST			5.0 NM	4.0 NM	3.0 NM	2.0 NM	1.0 NM		
	A	B	C	ALT	HGT	KT	MIN:SEC	FT / MIN		
LPV Cat I	417 (224)	429 (236)	437 (244)	1840	1520	1200	880	570		
LNAV/VNAV	430 (240)	440 (250)	450 (260)	1650	1330	1010	690	370		
LNAV	540 (350)			FAF-MAPt 5.5 NM		90	100	120	140	160
Circling (S of AD only)	630 (410)	730 (510)	900 (680)	Rate of descent		3:40	3:18	2:45	2:22	2:04
						480	535	640	745	850

CHANGES: TWR CH, circling layout, editorial.