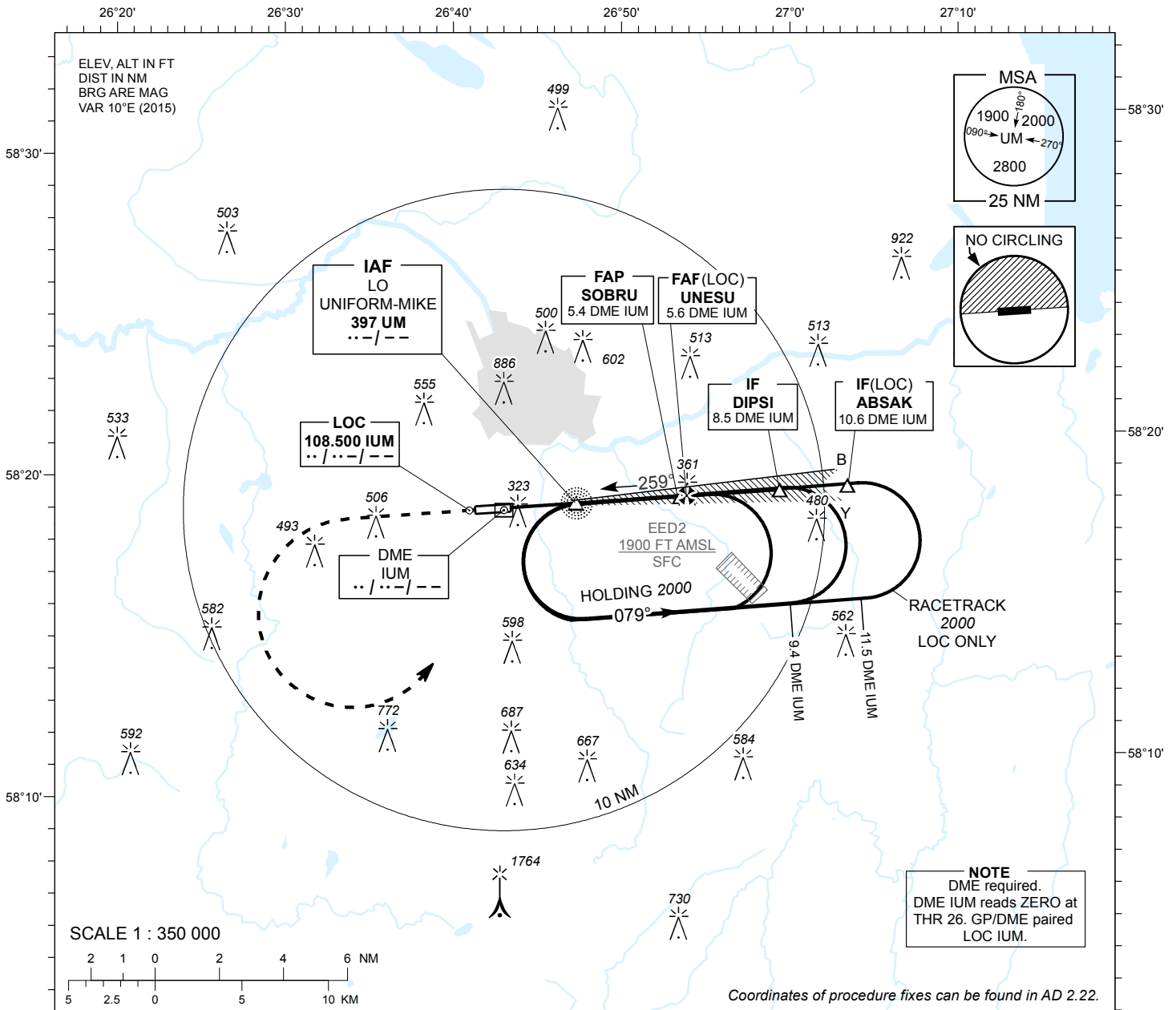


# INSTRUMENT APPROACH CHART - ICAO

AD ELEV 220 FT  
 HEIGHTS RELATED TO  
 THR RWY 26 ELEV 193 FT

TWR 133.905  
 ATIS 123.130 / TEL: +372 730 9212

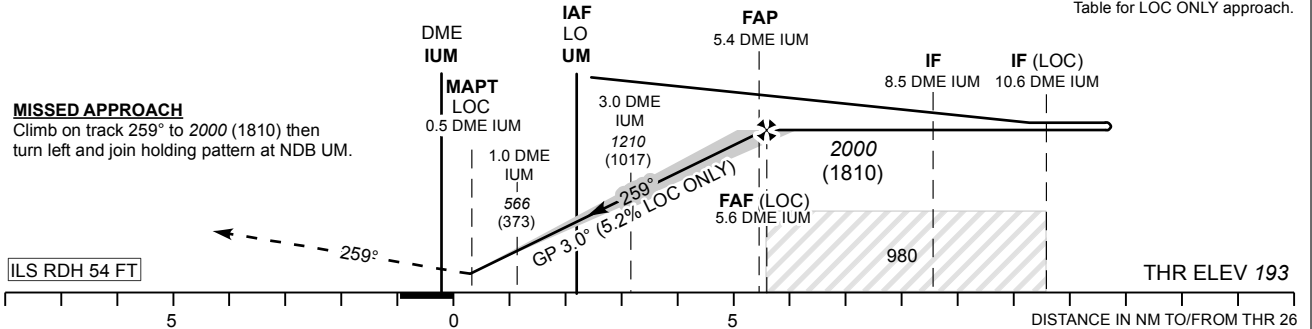
# TARTU (EETU) ILS Y or LOC RWY 26 (Cat A;B;C)



TRANSITION ALT 5000

DME IUM	DME 2	DME 3	DME 4	DME 5
ALT	880	1200	1520	1800
HGT	(690)	(1010)	(1330)	(1610)

Table for LOC ONLY approach.



OCA (H)		A	B	C	Timing not authorized for defining the MAPT.						
Straight-in Approach	CAT I	404 (211)	416 (223)	424 (231)	GS	KT	90	100	120	140	160
	LOC ONLY	540 (350)			FAF-MAPT 5.1 NM	MIN:SEC	3:24	3:04	2:33	2:11	1:55
Circling (S of AD only)		630 (410)	730 (510)	900 (680)	Rate of descent	FT / MIN	475	530	635	740	850

CHANGES: Intermediate MOCA added to profile view.  
 TWR CH: circling layout.