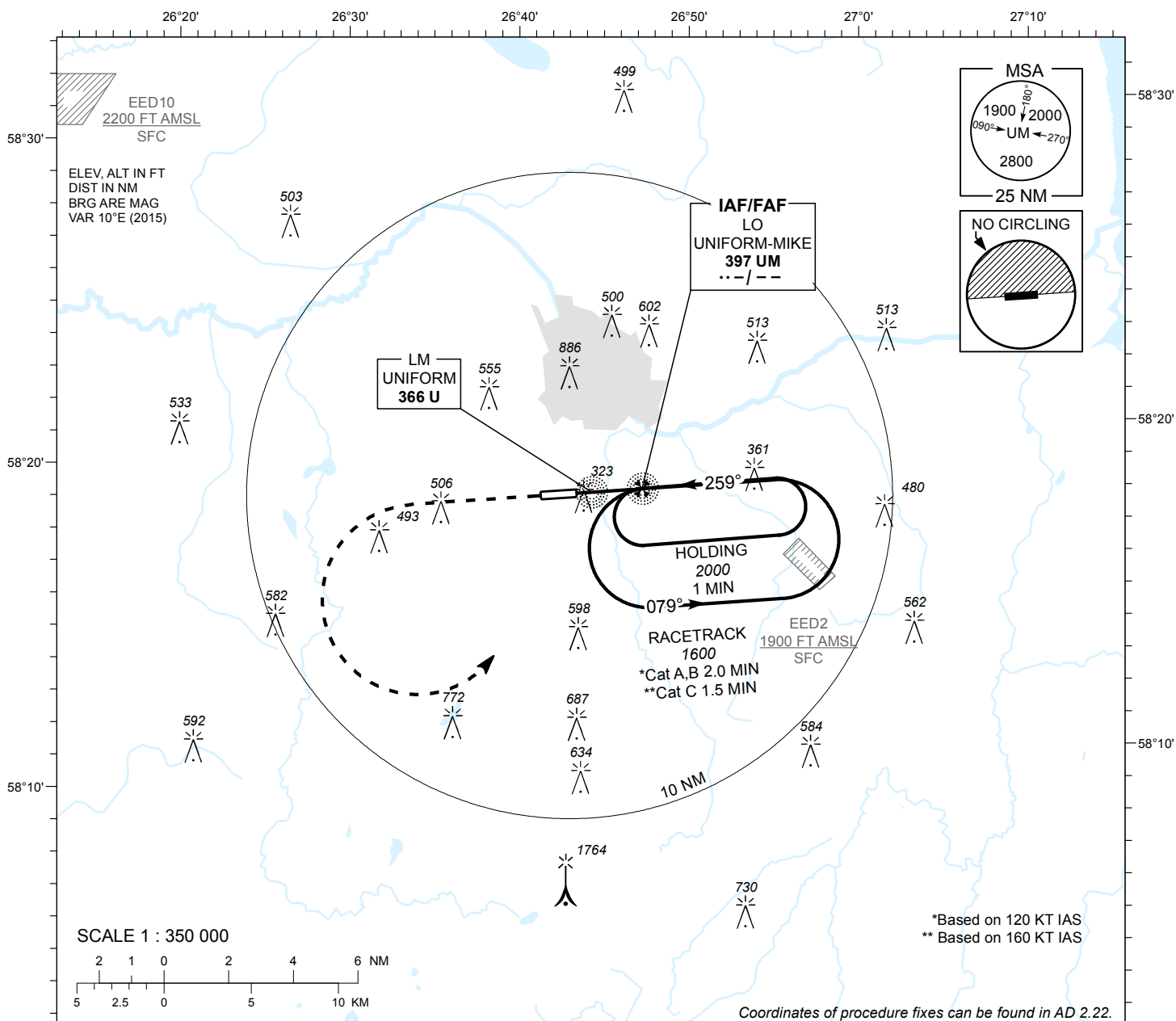


# INSTRUMENT APPROACH CHART - ICAO

AD ELEV 220 FT  
HEIGHTS RELATED TO  
THR RWY 26 ELEV 193 FT

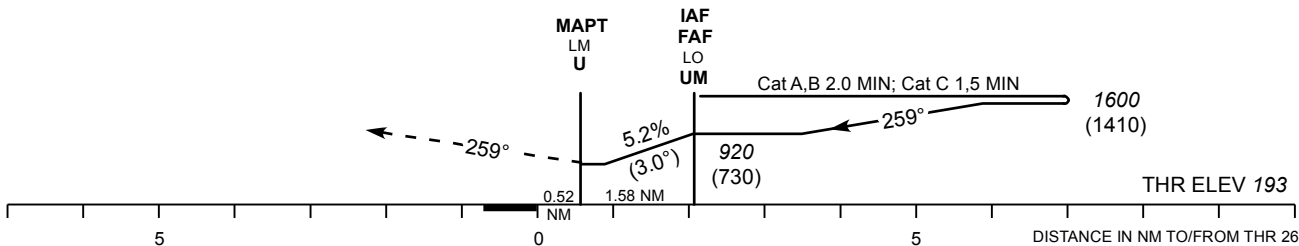
TWR 133.905  
ATIS 123.130 / TEL: +372 730 9212

**TARTU (EETU)**  
**NDB RWY 26**  
(Cat A;B;C)



**MISSED APPROACH**  
Climb on track 259° to 2000 (1810).  
Turn left to LO 397 UM to join holding pattern.

**TRANSITION ALT 5000**



Timing not authorized for defining the MAPt.

OCA (H)	A	B	C		KT	90	100	120	140	160
Straight-in Approach		580 (390)		FAF-MAPT 1.58 NM	MIN:SEC	1:03	0:57	0:47	0:41	0:36
Circling (S of AD only)	630 (410)	730 (510)	900 (680)	Rate of descent	FT / MIN	475	530	635	740	845

CHANGES : TWR CH. circling layout.