

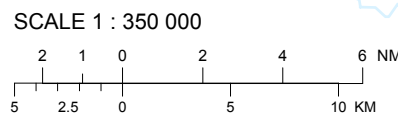
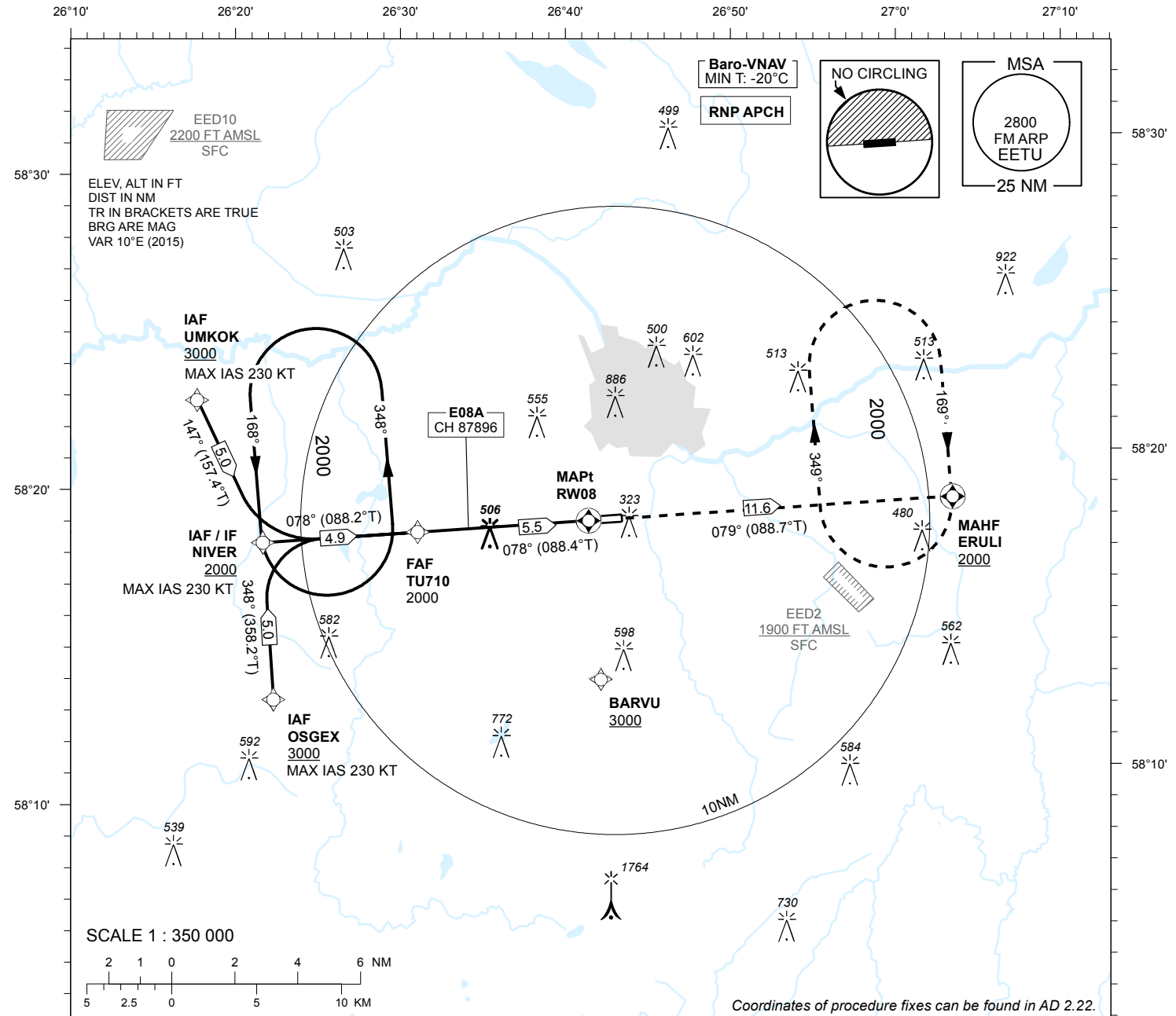
**INSTRUMENT  
APPROACH  
CHART - ICAO**

**SBAS  
CH 87896  
E08A**

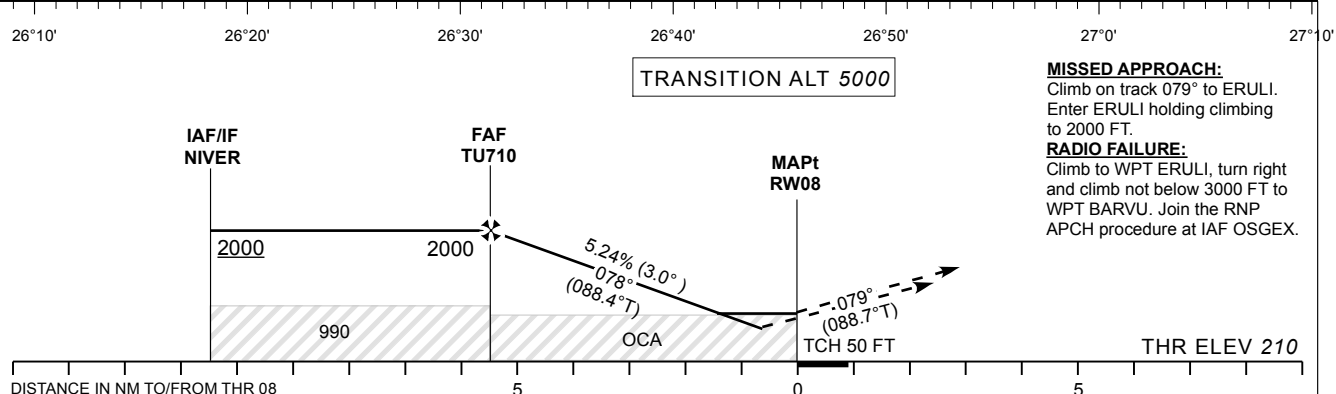
**AD ELEV 220 FT  
HEIGHTS RELATED TO  
THR RWY 08 ELEV 210 FT**

TWR 133.905  
ATIS 123.130 / TEL: +372 730 9212

**TARTU (EETU)  
RNP RWY 08  
(Cat A;B;C)**



Coordinates of procedure fixes can be found in AD 2.22.



**TRANSITION ALT 5000**

**MISSED APPROACH:**  
Climb on track 079° to ERULI. Enter ERULI holding climbing to 2000 FT.

**RADIO FAILURE:**  
Climb to WPT ERULI, turn right and climb not below 3000 FT to WPT BARVU. Join the RNP APCH procedure at IAF OSGEX.

Decision heights (DH) below 250 FT shall not be used due to APV approach operation Type A limitations.

				Final Approach DIST	5.0 NM	4.0 NM	3.0 NM	2.0 NM	1.0 NM
OCA (H)	A	B	C	ALT	1850	1530	1210	900	580
LPV	417 (207)	429 (219)	437 (227)	HGT	1640	1320	1000	690	370
LNAV/VNAV	380 (170)	400 (190)	410 (200)		KT	90	100	120	140
LNAV	680 (470)			FAF-MAPt 5.5 NM	MIN:SEC	3:40	3:18	2:45	2:22
Circling (S of AD only)	630 (410)	730 (510)	900 (680)	Rate of descent	FT / MIN	480	535	640	745

CHANGES: TWR CH, circling layout, editorial.