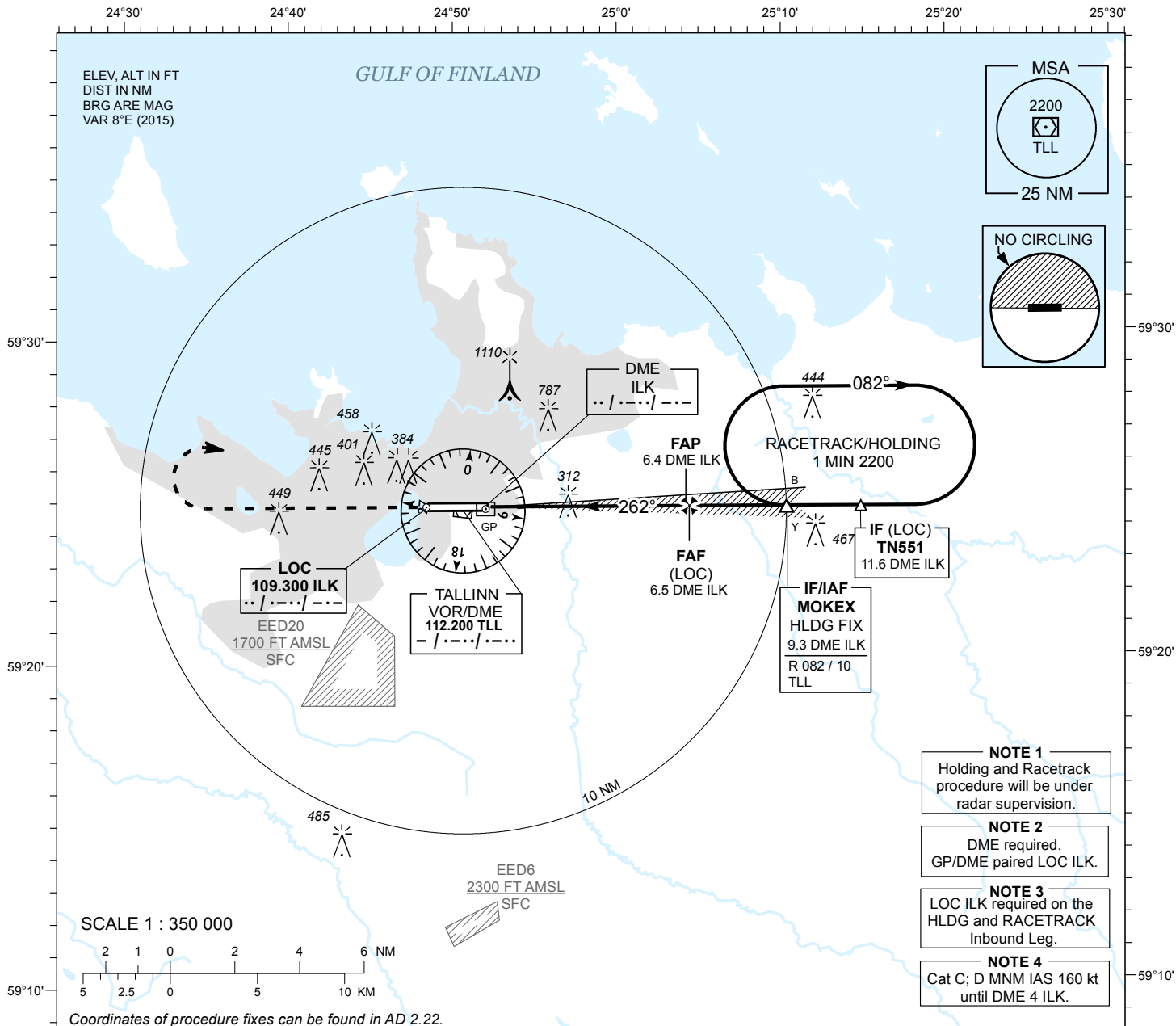


**INSTRUMENT
APPROACH
CHART - ICAO**

AD ELEV **135 FT**
HEIGHTS RELATED TO
THR RWY 26 ELEV **135 FT**

RADAR 127.905
TOWER 135.905
ATIS 124.880 / TEL: +372 625 8210

**LENNART MERI
TALLINN (EETN)
ILS or LOC RWY 26**



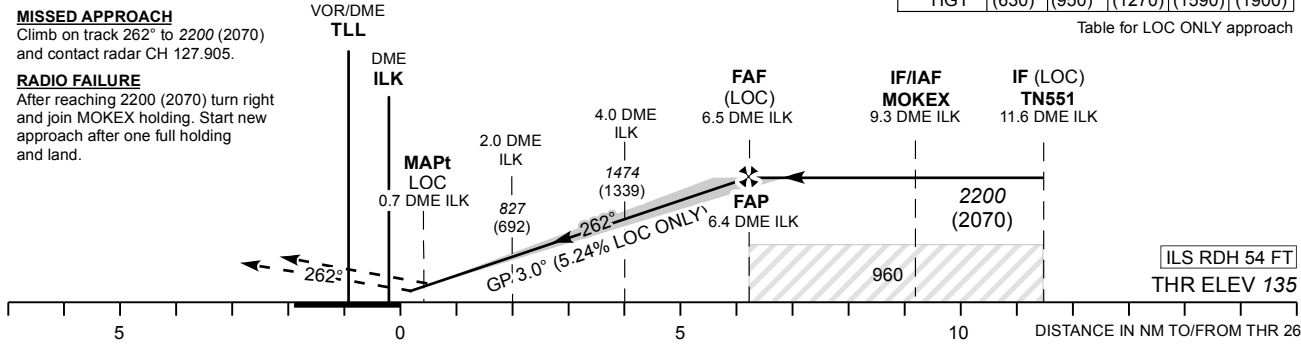
- NOTE 1**
Holding and Racetrack procedure will be under radar supervision.
- NOTE 2**
DME required.
GP/DME paired LOC ILK.
- NOTE 3**
LOC ILK required on the HLDG and RACETRACK Inbound Leg.
- NOTE 4**
Cat C; D MNM IAS 160 kt until DME 4 ILK.

Coordinates of procedure fixes can be found in AD 2.22.

TRANSITION ALT 5000

DME ILK	DME 2	DME 3	DME 4	DME 5	DME 6
ALT	770	1090	1410	1730	2040
HGT	(630)	(950)	(1270)	(1590)	(1900)

Table for LOC ONLY approach



NO OFZ RWY 26

		OCA (H)	A	B	C	D	Timing not authorized for defining the MAPt.					
Straight-in Approach	CAT I	308 (173)	320 (185)	328 (193)	338 (203)	GS	KT	90	100	120	140	160
	LOC ONLY	560 (430)				FAF-MAPt 5.8 NM	MIN:SEC	3:52	3:29	2:54	2:29	2:11
Circling (S of AD only)		1360 (1230)	1510 (1380)		Rate of descent	FT / MIN	475	530	635	740	850	

CHANGES: Intermediate MOCA added to profile view, circling layout, RADAR, TWR, ATIS CH.