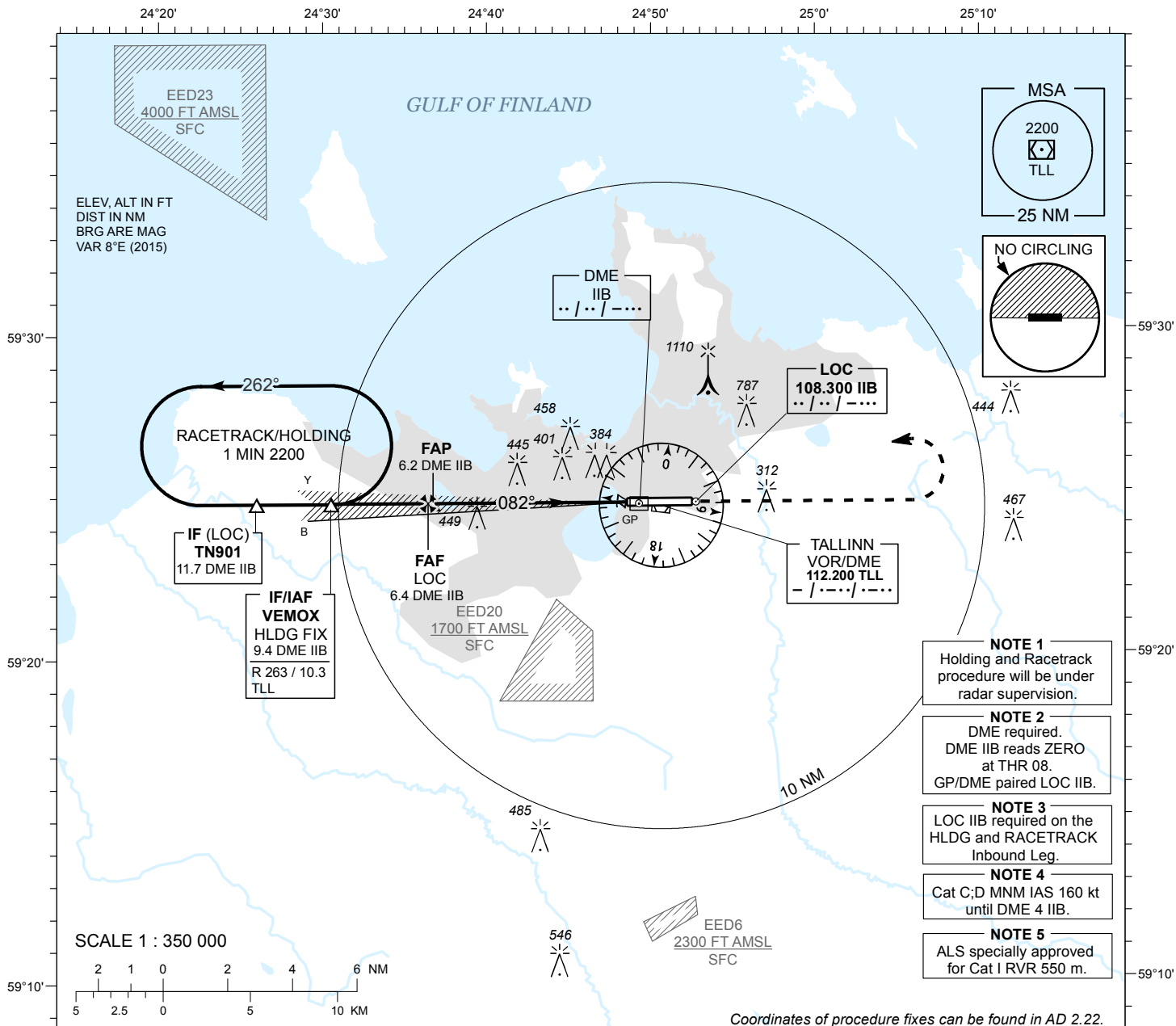


**INSTRUMENT
APPROACH
CHART - ICAO**

AD ELEV **135 FT**
HEIGHTS RELATED TO
THR RWY 08 ELEV **130 FT**

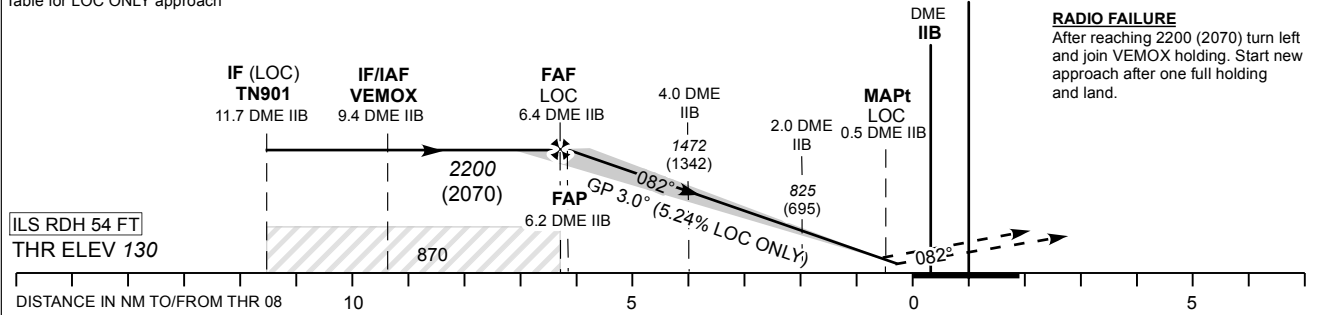
RADAR 127.905
TOWER 135.905
ATIS 124.880 / TEL: +372 625 8210

**LENNART MERI
TALLINN (EETN)
ILS or LOC RWY 08**



DME IIB	DME 6	DME 5	DME 4	DME 3	DME 2
ALT	2130	1800	1470	1150	820
HGT	(2000)	(1670)	(1340)	(1020)	(690)

Table for LOC ONLY approach



MISSED APPROACH
Climb on track 082° to 2200 (2070) and contact radar CH 127.905.

RADIO FAILURE
After reaching 2200 (2070) turn left and join VEMOX holding. Start new approach after one full holding and land.

ALS specially approved for Cat I RVR 550 m.
NO OFZ RWY 08

OCA (H)	A	B	C	D	Timing not authorized for defining the MAPt.							
Straight-in Approach	CAT I	300 (170)	312 (182)	321 (191)	331 (201)	GS	KT	90	100	120	140	160
Approach	LOC ONLY	540 (410)				FAF-MAPT 5.9 NM	MIN:SEC	3:56	3:32	2:57	2:32	2:13
Circling (S of AD only)		1360 (1230)		1510 (1380)		Rate of descent	FT / MIN	475	530	635	740	850

CHANGES : Circling layout, Intermediate MOCA added to profile view, RADAR, TWR, ATIS, CH, editorial.