

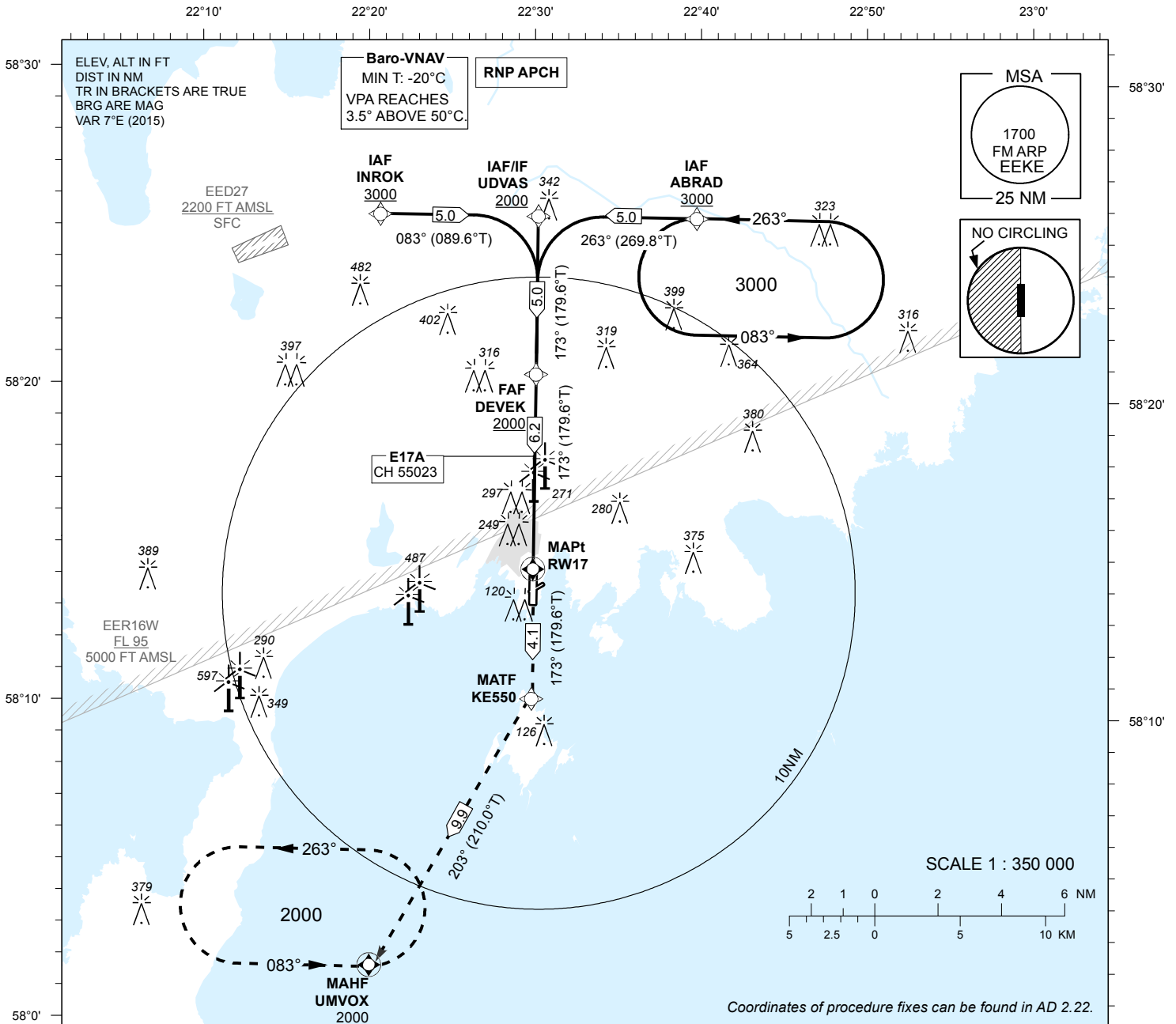
INSTRUMENT APPROACH CHART - ICAO

SBAS
CH 55023
E17A

AD ELEV 15 FT
HEIGHTS RELATED TO
THR RWY 17 ELEV 10 FT

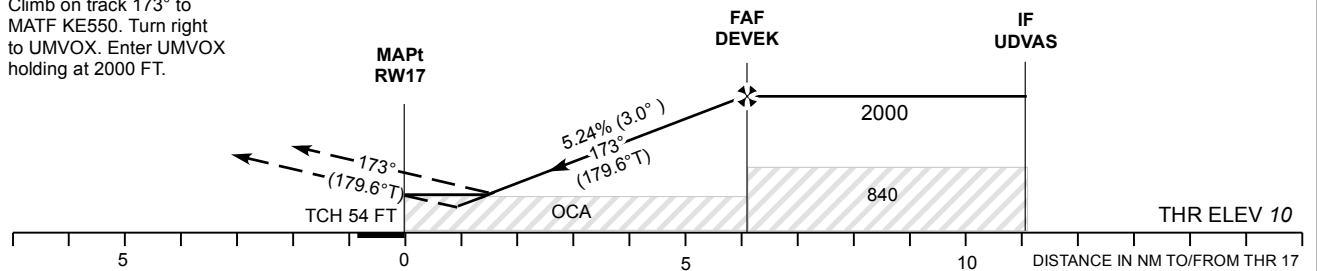
INFORMATION 118.055

KURESSAARE (EEKE)
RNP RWY 17
(Cat A;B;C)



MISSED APPROACH:
Climb on track 173° to MATF KE550. Turn right to UMVOX. Enter UMVOX holding at 2000 FT.

TRANSITION ALT 5000



Decision heights (DH) below 250 FT shall not be used due to APV approach operation Type A limitations.

OCA (H)	Final Approach DIST			5.0 NM	4.0 NM	3.0 NM	2.0 NM	1.0 NM (LPV)		
	A	B	C	ALT	HGT	MIN:SEC	FT / MIN	Rate of descent		
LPV	242 (232)	255 (245)	263 (253)	1660	1340	1030	710	400		
LNAV/VNAV	410 (400)	430 (420)			1650	1330	1020	700	390	
LNAV	530 (520)			FAF-MAPt 6.2 NM	MIN:SEC	4:08	3:43	3:06	2:39	2:20
Circling E of AD only	610 (600)		710 (700)	Rate of descent	FT / MIN	475	530	635	740	850

CHANGES: Information CH, circling layout.