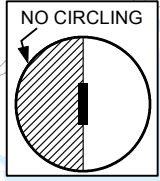
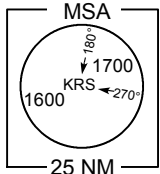
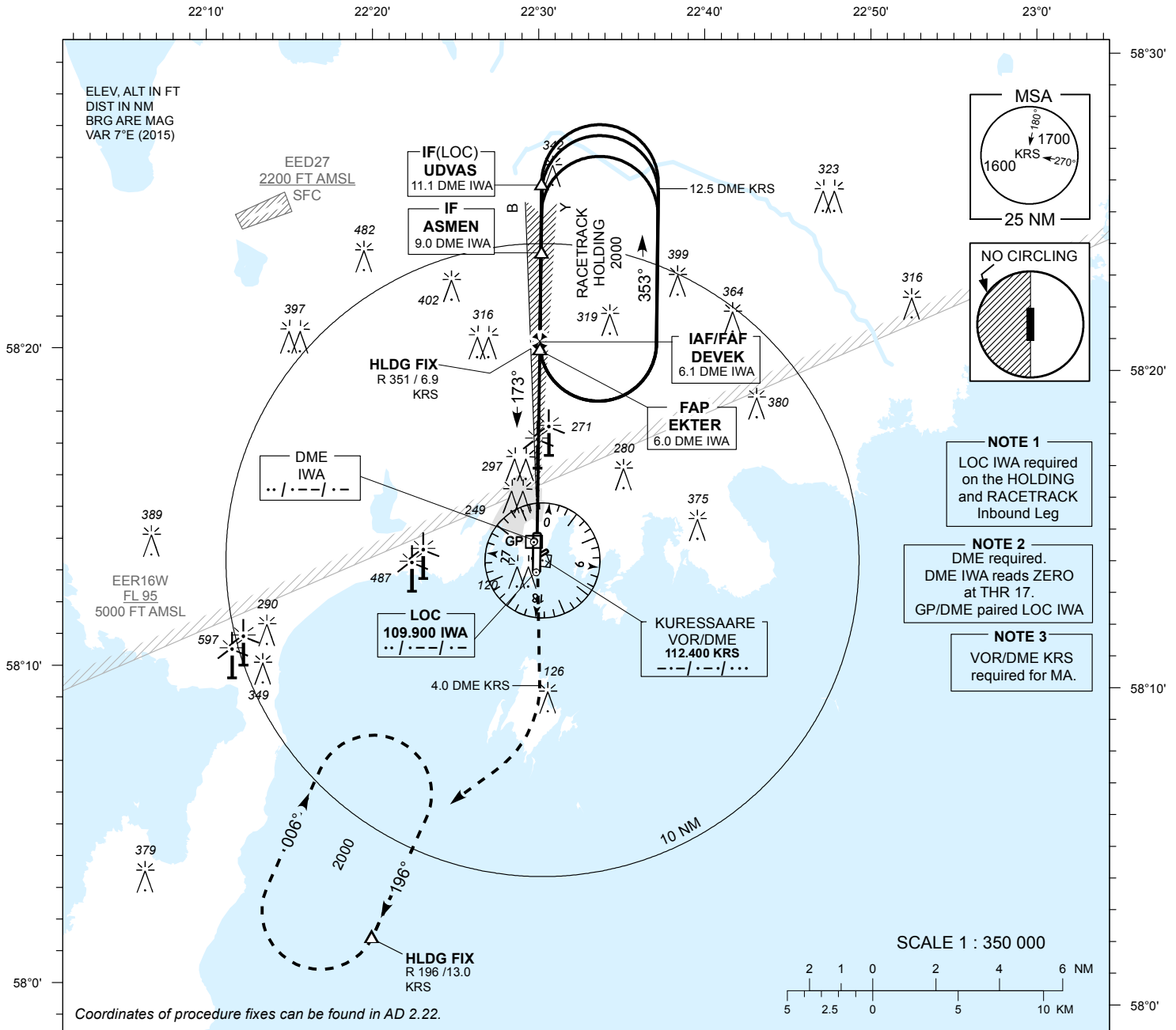


**INSTRUMENT  
APPROACH  
CHART - ICAO**

AD ELEV 15 FT  
HEIGHTS RELATED TO  
THR RWY 17 ELEV 10 FT

INFORMATION 118.055

**KURESSAARE (EEKE)  
ILS or LOC RWY 17  
(Cat A;B;C)**



**NOTE 1**  
LOC IWA required on the HOLDING and RACETRACK Inbound Leg

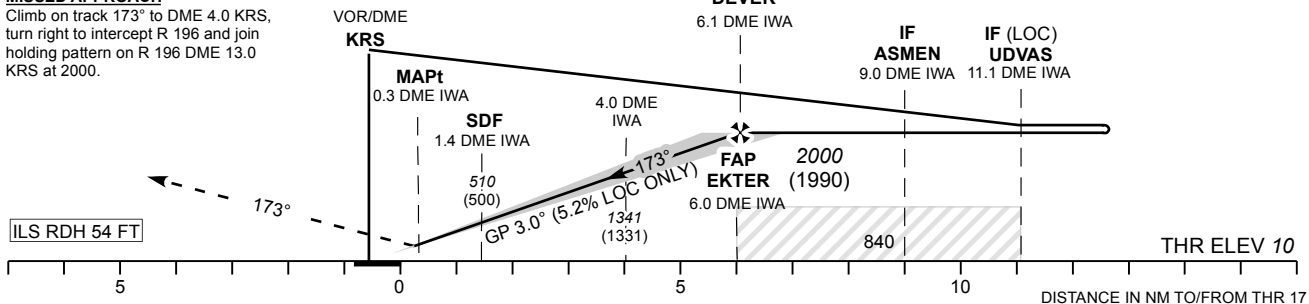
**NOTE 2**  
DME required. DME IWA reads ZERO at THR 17. GP/DME paired LOC IWA

**NOTE 3**  
VOR/DME KRS required for MA.

TRANSITION ALT 5000

**MISSED APPROACH**  
Climb on track 173° to DME 4.0 KRS, turn right to intercept R 196 and join holding pattern on R 196 DME 13.0 KRS at 2000.

DME IWA	DME 2	DME 3	DME 4	DME 5
ALT	700	1020	1340	1660
HGT	(690)	(1010)	(1330)	(1650)



NO OFZ RWY 17

Straight-in Approach	OCA (H)			Timing from table not authorized for defining the MAPt.						
	A	B	C	GS	KT	90	100	120	140	160
CAT I	176 (166)	188 (178)	196 (186)							
LOC ONLY	520 (510)			FAF-MAPt 5.75 NM	MIN:SEC	3:48	3:25	2:51	2:27	2:08
LOC ONLY+SDF	400 (390)			Rate of descent	FT / MIN	475	530	635	740	850
Circling (E of AD only)	610 (600)		710 (700)							

CHANGES: Intermediate MOCA added to profile view, information CH, circling layout.