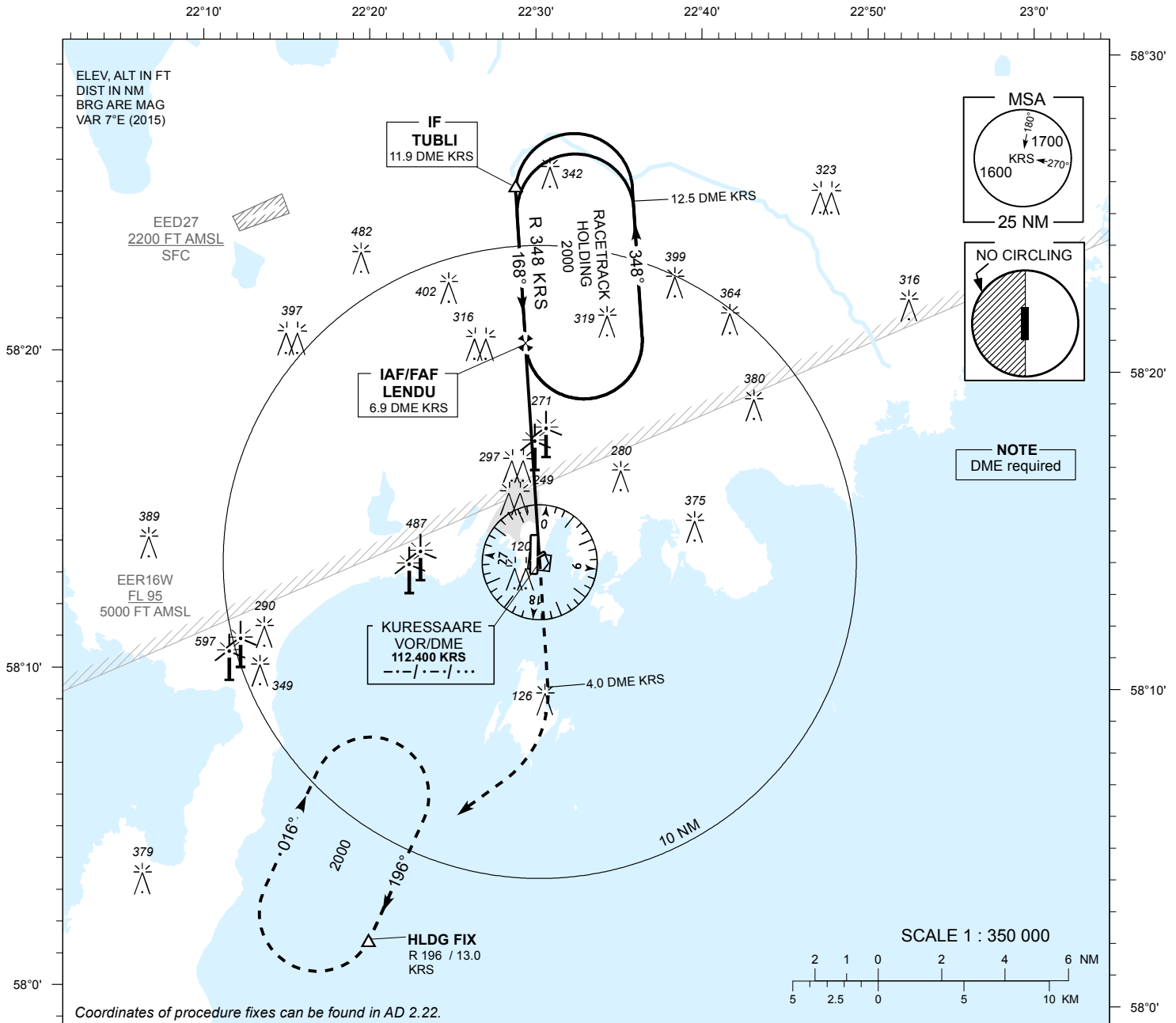


INSTRUMENT APPROACH CHART - ICAO

AD ELEV 15 FT
HEIGHTS RELATED TO
THR RWY 17 ELEV 10 FT

INFORMATION 118.055

KURESSAARE (EEKE) VOR RWY 17 (Cat A;B;C)



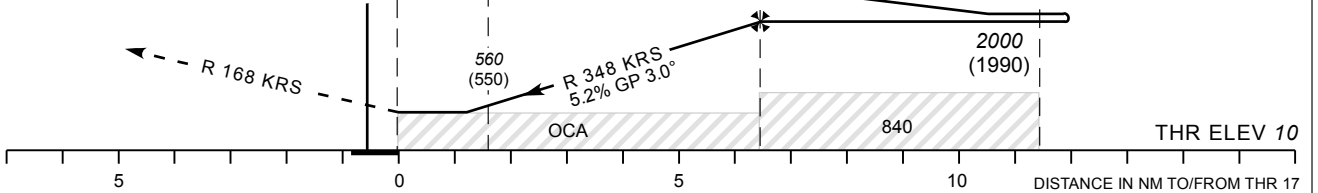
Coordinates of procedure fixes can be found in AD 2.22.

TRANSITION ALT 5000

DME KRS	DME 3	DME 4	DME 5	DME 6
ALT	770	1080	1400	1720
HGT	(760)	(1070)	(1390)	(1710)

MISSED APPROACH

Climb on R 168 to DME 4.0 KRS, turn right to intercept R 196 and join holding pattern on R 196 DME 13.0 KRS at 2000.



	OCA (H)			Timing from table not authorized for defining the MAPt.						
	A	B	C	KT	MIN:SEC	FT / MIN				
Straight-in-Approach		550 (540)		90	3:48	475	100	120	140	160
Straight-in-Approach+SDF		530 (520)			3:25	530	3:25	2:51	2:27	2:08
Circling (E of AD only)	610 (600)		710 (700)							

CHANGES: Intermediate MOCA and OCA added to profile view, information CH, circling layout.