

INSTRUMENT APPROACH CHART - ICAO

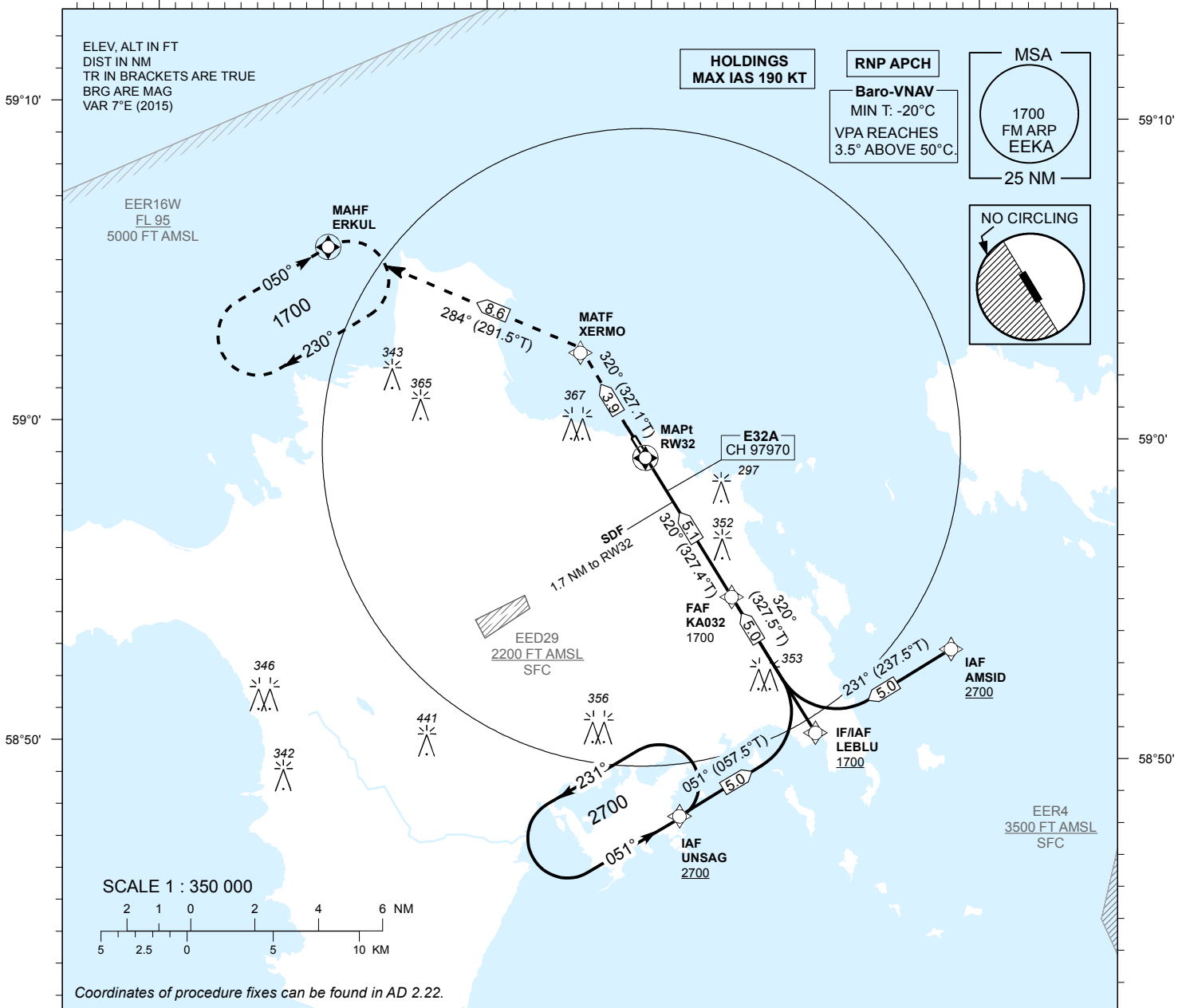
**SBAS
CH 97970
E32A**

**AD ELEV 18 FT
HEIGHTS RELATED TO
THR RWY 32 ELEV 15 FT**

INFORMATION 133.405

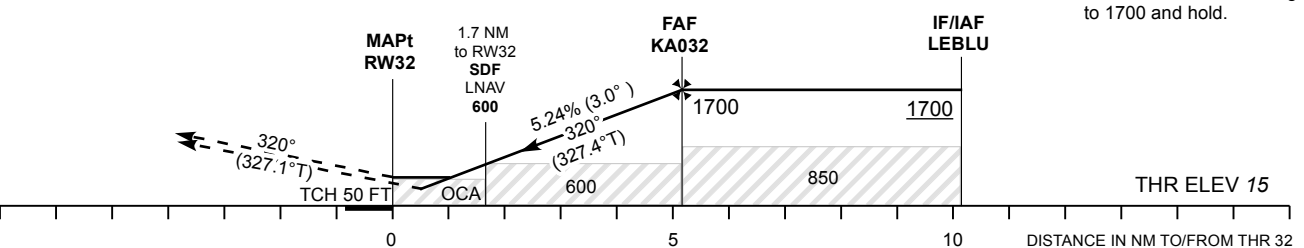
**KÄRDLA (EEKA)
RNP RWY 32
(Cat A;B;C)**

22°20' 22°30' 22°40' 22°50' 23°0' 23°10'



TRANSITION ALT 5000

MISSED APPROACH:
Climb on track 320° to MATF XERMO. Turn left to MAHF ERKUL climbing to 1700 and hold.



Decision heights (DH) below 250 FT shall not be used due to APV approach operation Type A limitations.

OCA (H)	Final Approach DIST			5.0 NM	4.0 NM	3.0 NM	2.0 NM	1.0 NM
	A	B	C	ALT	HGT	MIN:SEC	MIN:SEC	MIN:SEC
LPV	196 (181)	208 (193)	216 (201)	1660	1340	1020	700	380
LNAV/VNAV	230 (220)	250 (240)	270 (260)	1650	1330	1010	690	370
LNAV	310 (300)			KT	90	100	120	140
Circling E of AD only	420 (410)	510 (500)	750 (740)	FAF-MAPt 5.1 NM	MIN:SEC	3:26	3:05	2:35
				Rate of descent	FT / MIN	480	535	640
							745	850

CHANGES: Circling layout, information CH.