

# INSTRUMENT APPROACH CHART - ICAO

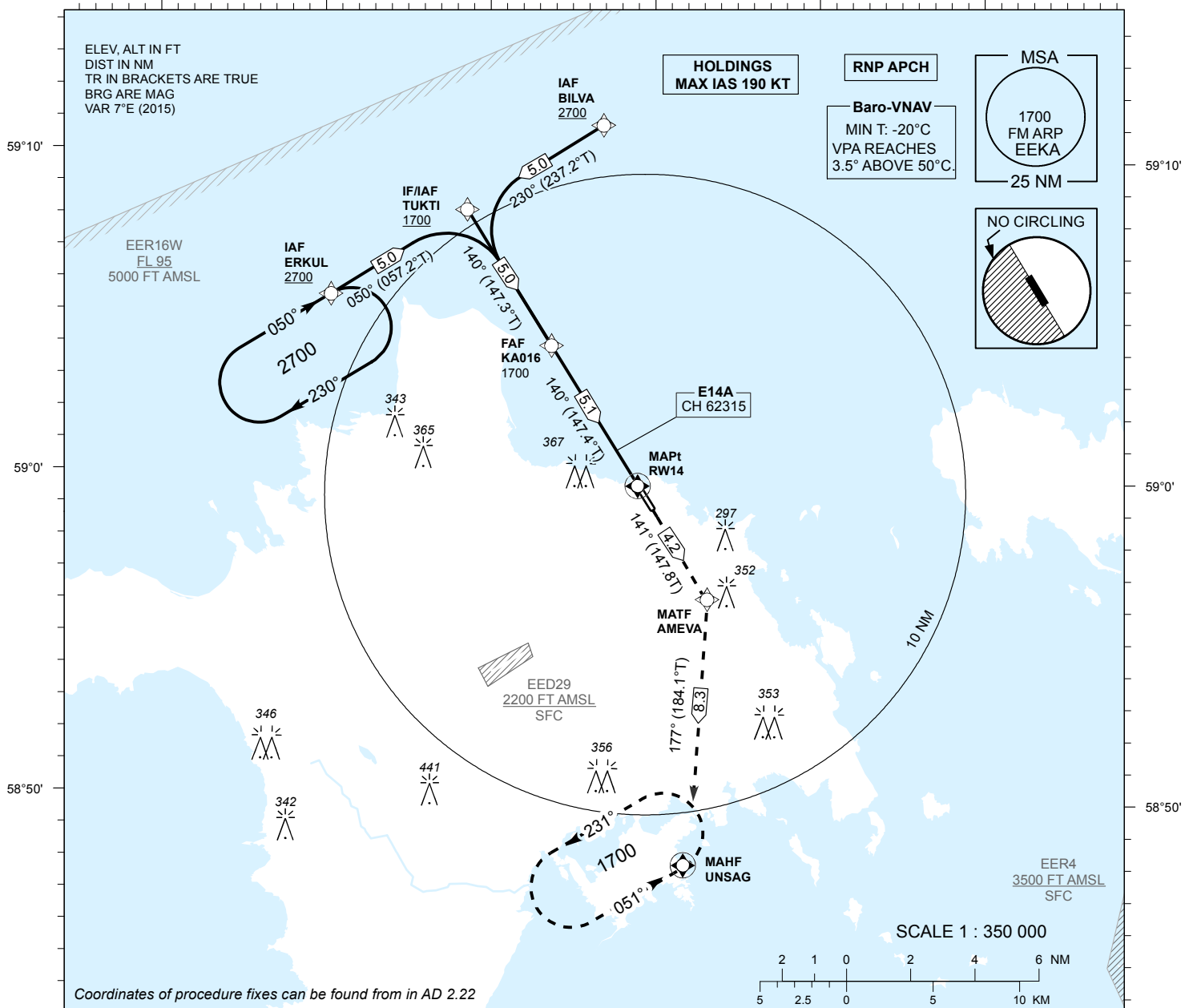
SBAS  
CH 62315  
E14A

AD ELEV 18 FT  
HEIGHTS RELATED TO  
THR RWY 14 ELEV 12 FT

INFORMATION 133.405

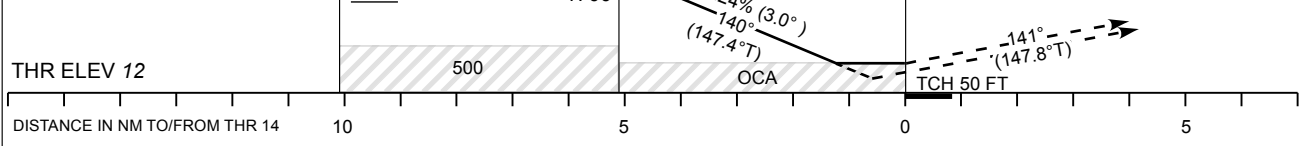
**KÄRDLA (EEKA)**  
RNP RWY 14  
(Cat A;B;C)

22°20'      22°30'      22°40'      22°50'      23°0'      23°10'



TRANSITION ALT 5000

**MISSED APPROACH:**  
Climb on track 141° to  
MATF AMEVA. Turn right  
to MAHF UNSAG climbing  
to 1700 and hold.



Decision heights (DH) below 250 FT shall not be used due to APV approach operation Type A limitations.

OCA (H)	Final Approach DIST			5.0 NM	4.0 NM	3.0 NM	2.0 NM	1.0 NM		
	A	B	C	ALT	HGT	KT	MIN:SEC	FT / MIN		
LPV	196 (184)	208 (196)	216 (204)	1660	1340	1020	700	380		
LNAV/VNAV	260 (250)	270 (260)	290 (280)	1650	1330	1010	690	370		
LNAV	320 (310)			FAF-MAPt 5.1 NM	MIN:SEC	3:26	3:06	2:35	2:13	1:56
Circling E of AD only	420 (410)	510 (500)	750 (740)	Rate of descent	FT / MIN	480	535	640	745	850

CHANGES: Circling layout, information CH.