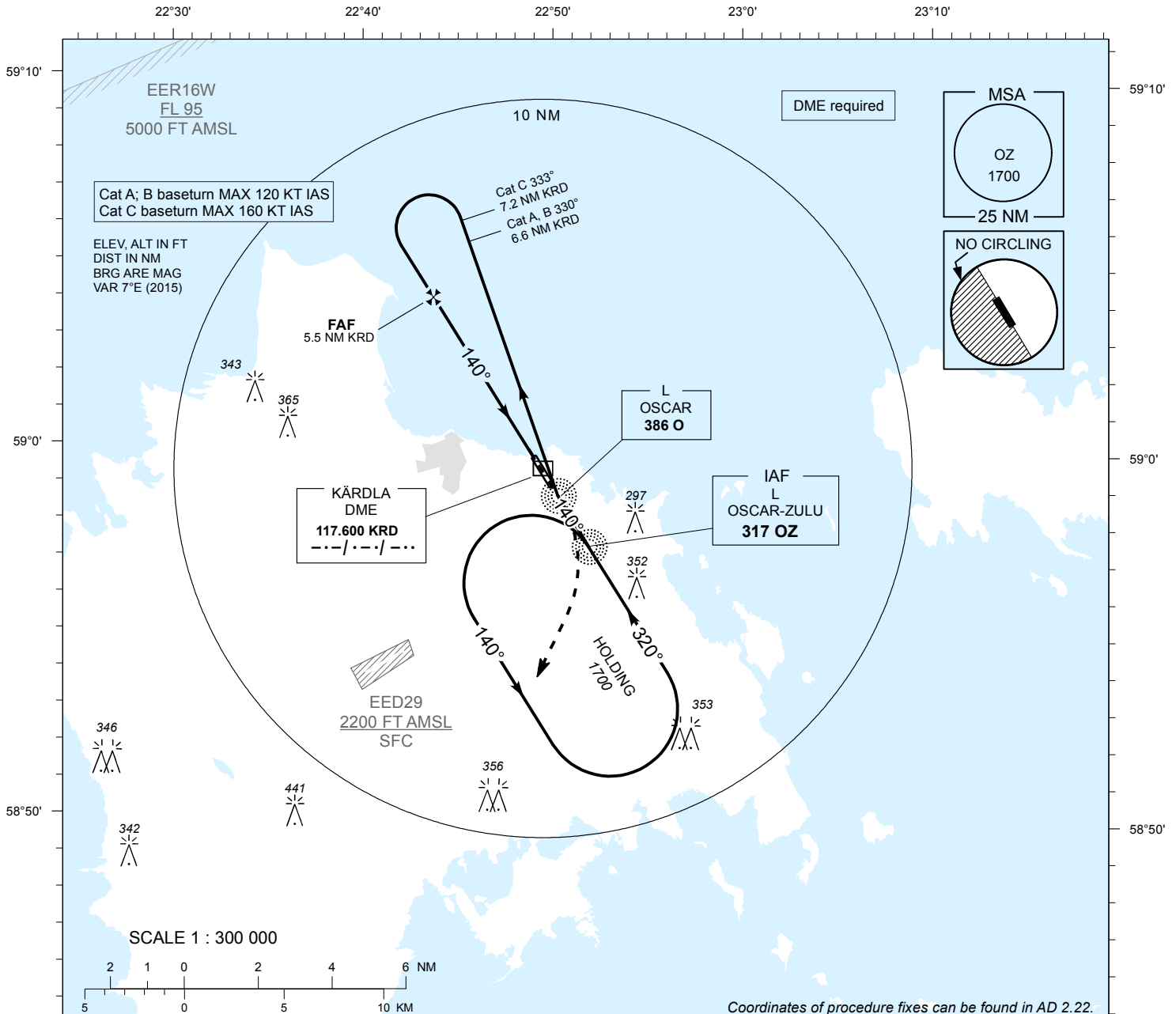


INSTRUMENT APPROACH CHART - ICAO

AD ELEV 18 FT
HEIGHTS RELATED TO
THR RWY 14 ELEV 12 FT

INFORMATION 133.405

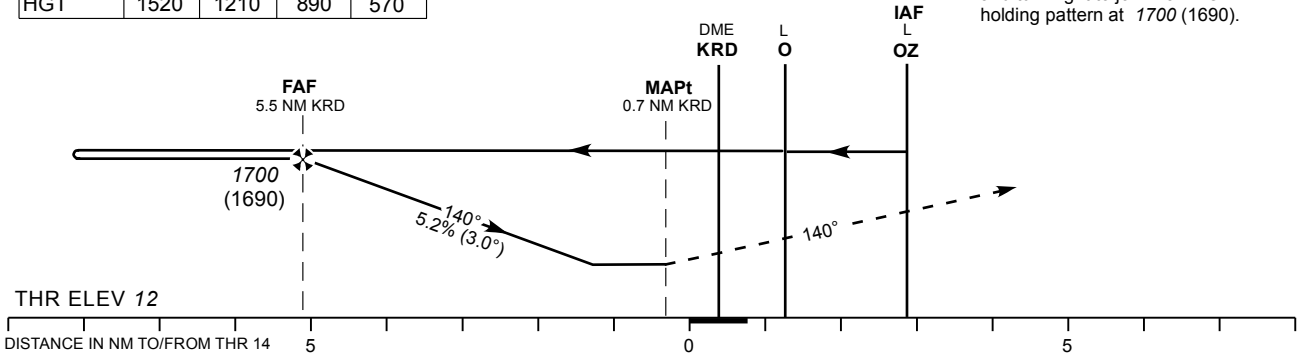
KÄRDLA (EEKA)
NDB RWY 14
(Cat A;B;C)



| DME KRD | DME 5 | DME 4 | DME 3 | DME 2 |
|---------|-------|-------|-------|-------|
| ALT | 1530 | 1220 | 900 | 580 |
| HGT | 1520 | 1210 | 890 | 570 |

TRANSITION ALT 5000

MISSED APPROACH
Climb on track 140° to 500 (490)
and turn right to join L 317 OZ
holding pattern at 1700 (1690).



Timing from table not authorized for defining the MAPt.

| OCA (H) | A | B | C | KT | 90 | 100 | 120 | 140 | 160 | |
|-------------------------|-----------|-----------|-----------|-----------------|----------|------|------|------|------|------|
| Straight-in-Approach | 440 (430) | | | FAF-MAPT 4.9 NM | MIN:SEC | 3:16 | 2:56 | 2:27 | 2:06 | 1:50 |
| Circling (E of AD only) | 420 (410) | 510 (500) | 750 (740) | Rate of descent | FT / MIN | 475 | 525 | 630 | 740 | 840 |

CHANGES: Circling layout, information CH.